

# Datasheet of SAW Filter

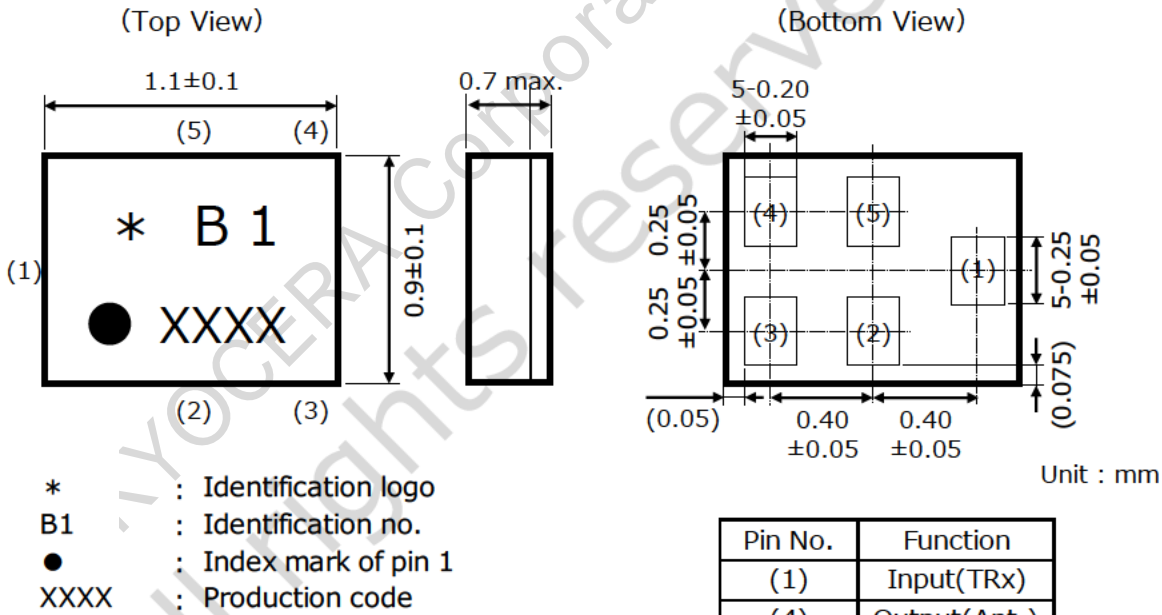
## 1109 Band41n TRx

KYOCERA Part No. : SF11-2595B5UUA1

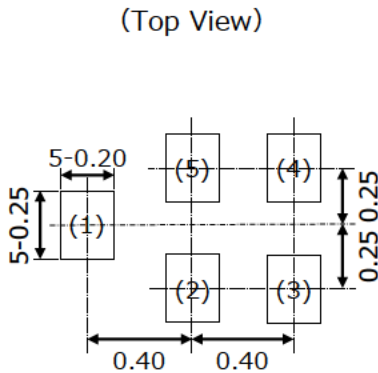
# Rating

Items	Rating	Unit	Note
Operating Temperature Range	-20 to +85	deg.C	
Storage Temperature Range	-40 to +85	deg.C	
Max Input Power (TRx port)	+29	dBm	5,000Hours, Ta=50deg.C, CW
TRx Port Nominal Impedance	50//3.3nH	ohm	Unbalance
Ant. Port Nominal Impedance	50//2.4nH	ohm	Unbalance

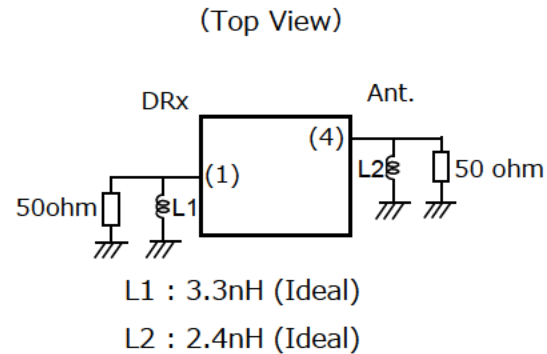
# Dimensions



# Recommendable Land Pattern



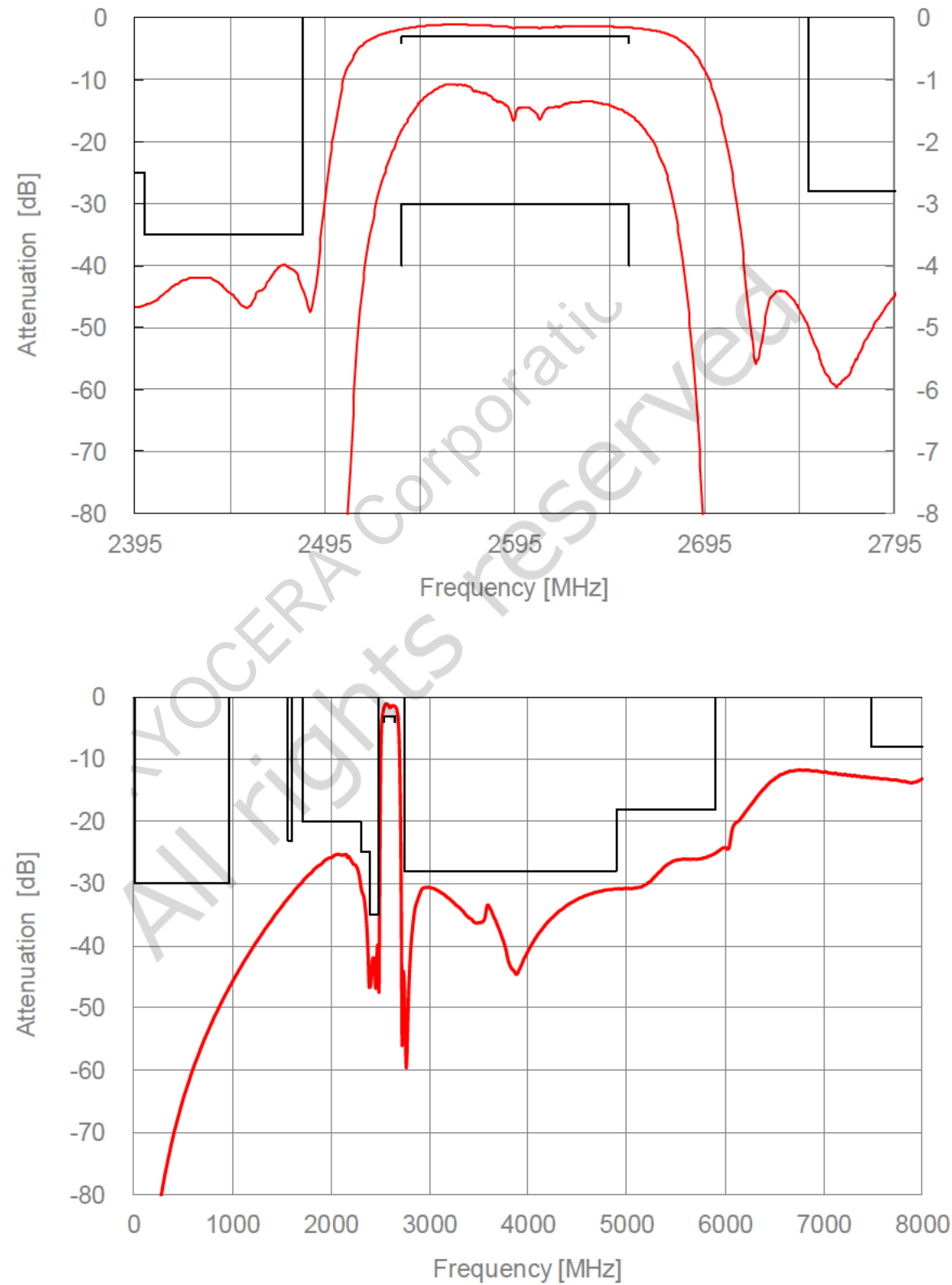
# Measurement Circuit



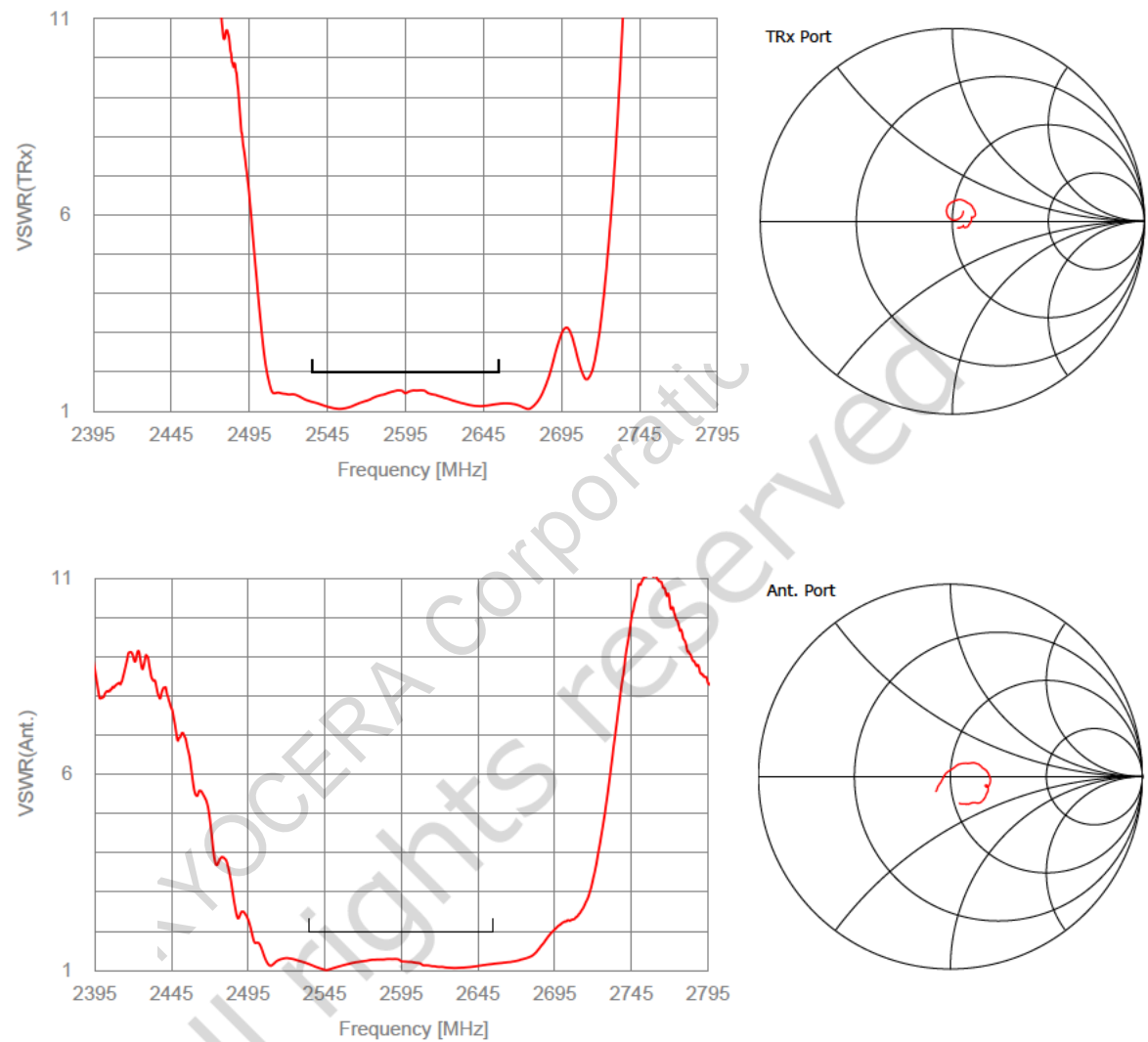
**Electrical Characteristics**

Items	Frequency (MHz)	Characteristics			Unit	Notes
		min.	Typ.	max.		
Nominal Center Frequency	-	2595			MHz	
Insertion Loss	2535 to 2655	-	1.8	3.0	dB	
	2570 to 2620	-	1.7	2.2	dB	
Ripple	2535 to 2655	-	0.8	2.0	dB	
Ant VSWR	2535 to 2655	-	1.3	2.0	-	
TRx VSWR	2535 to 2655	-	1.5	2.0	-	
Absolute Attenuation	10 to 960	30	47	-	dB	
	1560 to 1600	23	32	-	dB	
	1710 to 2300	20	25	-	dB	
	2300 to 2400	25	30	-	dB	
	2400 to 2483	35	40	-	dB	
	2750 to 4900	28	31	-	dB	
	4900 to 5900	18	25	-	dB	
	7488 to 8070	8	12	-	dB	

**Electrical Characteristics**

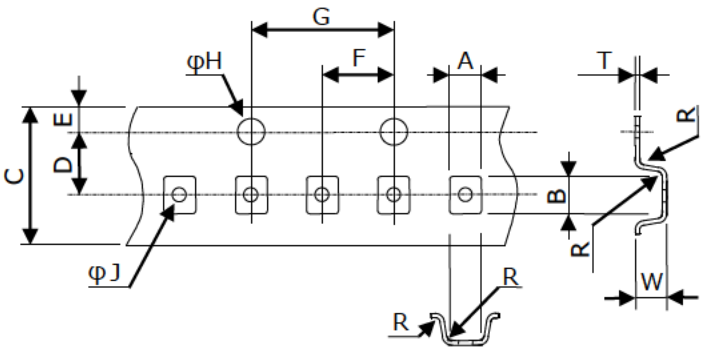


**Electrical Characteristics**



# Tape & Reel Specification

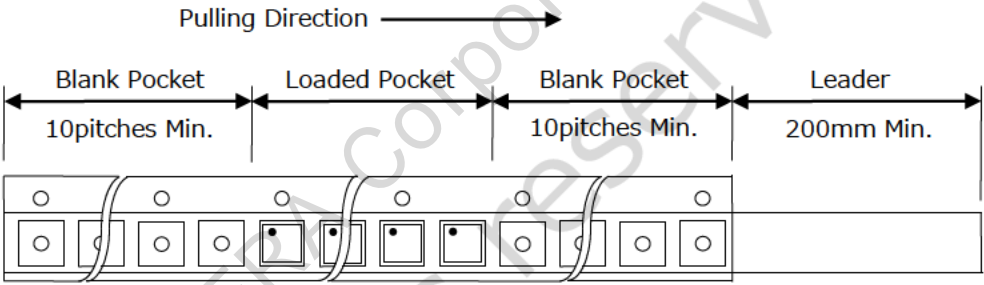
## [Tape]



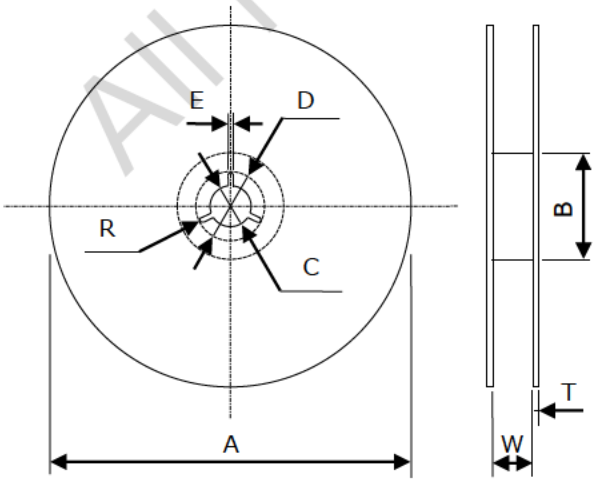
Unit : mm

Part	Dimension
A	1.1±0.1
B	1.3±0.1
C	8.0±0.2
D	3.50±0.05
E	1.75±0.10
F	2.0±0.1
G	4.0±0.1
H	1.5±0.1
J	0.50±0.05
R	0.1 Max
W	0.60±0.05
T	0.20±0.05

W : Dimension is depth of pockets.



## [Reel]



Unit : mm

Part	Dimension
A	178 ± 2
B	60 ± 2
C	13.0 ± 0.2
D	21.0 ± 0.8
E	2.0 ± 0.5
R	1
W	9.5 ± 1.0
T	2.0 ± 0.2

## Notice

1. Characteristics described in this datasheet are for references specifications shall be based on written documents agreed by each party.
2. Contents in this datasheet are subject to change without notice. It is recommended to confirm the latest information at the time of usage. Also, this datasheet is revised once a year. We may not be able to accept requests based on old datasheets.
3. Products in this datasheet are intended to be used in general electronic equipment such as office equipment, audio and visual equipment, communication equipment, measurement instrument and home appliances. It is absolutely recommended to consult with our sales representatives in advance upon planning to use our products in applications which require extremely high quality and reliability such as aircraft and aerospace equipment, traffic systems, safety systems, power plant and medical equipment including life maintenance systems.
4. Even though we strive for improvements of quality and reliability of products, it is requested to design with enough safety margin in equipment or systems in order not to threaten human lives directly or damage human bodies or properties by an accidental result of products.
5. It is requested to design based on guaranteed specifications for such as maximum ratings, operating voltage and operating temperature. It is not the scope of our guarantee for unsatisfactory results due to misuse or inadequate usage of products in the datasheet.
6. Operation summaries and circuit examples in this datasheet are intended to explain typical operation and usage of the product. It is recommended to perform circuit and assembly design considering surrounding conditions upon using products in this datasheet.
7. Technical information described in this datasheet is meant to explain typical operations and applications of products, and it is not intended to guarantee or license intellectual properties or other industrial rights of the third party or Kyocera.
8. Trademarks, logos and brand names used in this datasheet are owned by Kyocera or the corresponding third party.
9. Certain products in this datasheet are subject to the Foreign Exchange and Foreign Trade Control Act of Japan, and require the license from Japanese Government upon exporting the restricted products and technical information under the law. Besides, it is requested not to use products and technical information in the datasheet for the development and/or manufacture of weapons of mass destruction or other conventional weapons, nor to provide them to any third party with the possibility of having such purposes.
10. It is prohibited to reprint and reproduce a part or whole of this datasheet without permission.