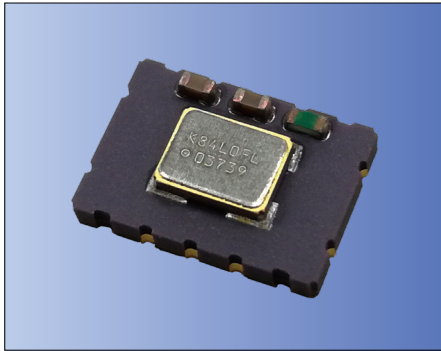




7.0×5.0mm



RoHS Compliant

Features

- High stability and high reliability
- 2.3 to 3.63V drive available
- Clipped sine wave or CMOS level output
- Low phase noise
- Disable Function (KT7050A)
- Operating Temp. -40 to +105°C (Option)

Applications

- 5G, Smallcell, Stratum3
- SONENT/ SDH/ Ethernet
- SyncE/ IEEE 1588

How to Order

KT7050 □ 20000 □ □ □ 33 T xx
① ② ③ ④ ⑤ ⑥ ⑦ ⑧

①Series

③Output Frequency

④Freq. Temp. Chrst.

U	$\pm 0.5 \times 10^{-6}$
K	$\pm 0.28 \times 10^{-6}$
A	$\pm 0.1 \times 10^{-6}$

⑥Supply Voltage

33	3.3V
----	------

②Land Type

A	10Pads
B	4Pads

⑤Operating Temperature Range

GT	-10°C to 70°C
AW	-40°C to 85°C
AY	-40°C to 105°C

⑦Voltage Control Function

T	TCXO
Spec. Code*	VCTCXO

*Please contact us for Spec. Code.

⑨Individual Specification

Packaging (Tape & Reel 1000 pcs./ reel)

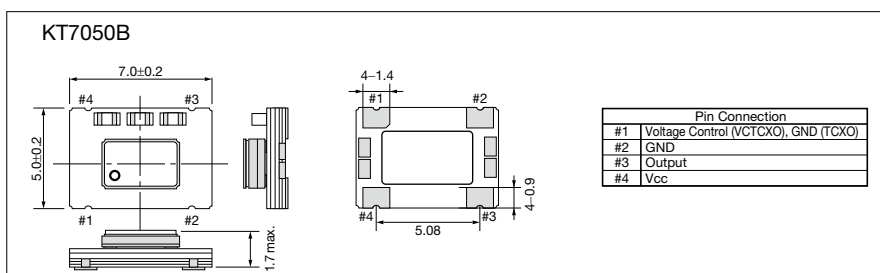
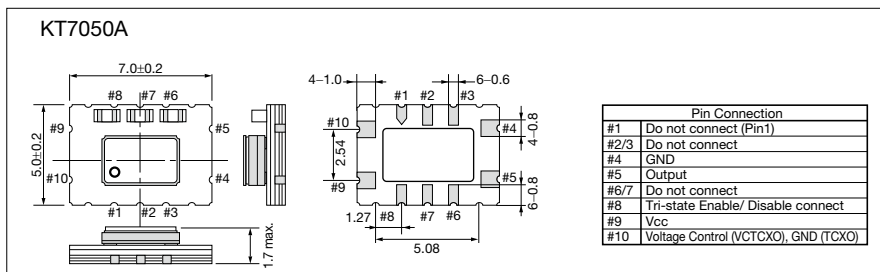
- Compliant to the GR1244-Core & GR253-Core
- Recommended in Microsemi's ZLAN-68 app. note for Stratum3 applications based on tests performed by Kyocera.

Specifications

Item	Symbol	Conditions	Min.	Max.	Unit	
Output Frequency Range	fo	Standard Frequency: 10, 19.2, 20, 24.576, 26, 30.72, 38.88, 40	10	40	MHz	
Frequency Tolerance	f _{tol}	vs Temperature [±(f _{max} -f _{min})/ 2fo]	-0.5	+0.5	× 10 ⁻⁶	
			-0.28	+0.28		
			-0.1	+0.1		
Supply Voltage	V _{CC}		+2.3	+3.63	V	
Current Consumption	I _{CC}	CMOS Output	—	6	mA	
Frequency Aging	f _{age}	20years aging @40°C Including temp characteristics, initial tolerance, rated power supply voltage change and load change.	-4.6	+4.6	× 10 ⁻⁶	
Voltage Control Range	f _{cont}	Positive *100k ohm min	±5	±20	× 10 ⁻⁶	
Output Level	V _{pp}	Clipped Sine, Load: 10k ohm // 10pF	0.8	—	Vp-p	
Low Level Output Voltage	V _{OL}	CMOS, Load: 15pF I _{OL} =4mA	—	10% V _{CC}	V	
High Level Output Voltage	V _{OH}	CMOS, Load: 15pF I _{OH} =-4mA	90% V _{CC}	—	V	
Rise / Fall Time (10%V _{CC} to 90%V _{CC})	Tr/ Tf	CMOS, Load: 15pF	—	8	ns	
Symmetry	SYM	50% V _{CC}	45	55	%	
Phase Noise	—	@20MHz	@10Hz offset	—	-90	dBc/ Hz
			@100Hz offset	—	-120	
			@1kHz offset	—	-140	
			@10kHz offset	—	-150	
			@100kHz offset	—	-150	

* Please contact us for other specifications.

Dimensions



Recommended Land Pattern

(Unit: mm)

