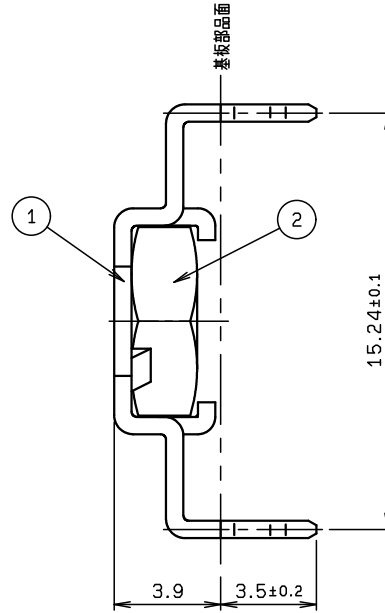
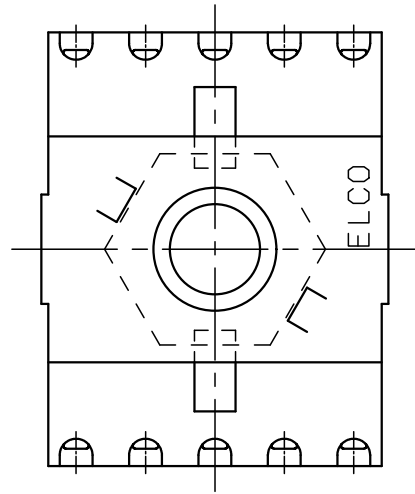
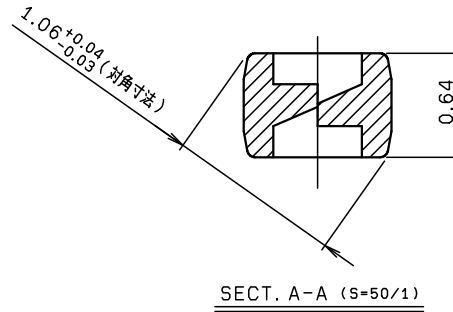
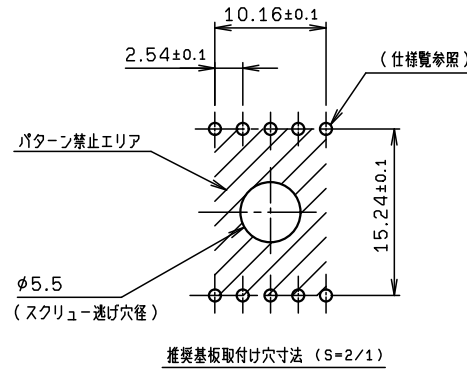
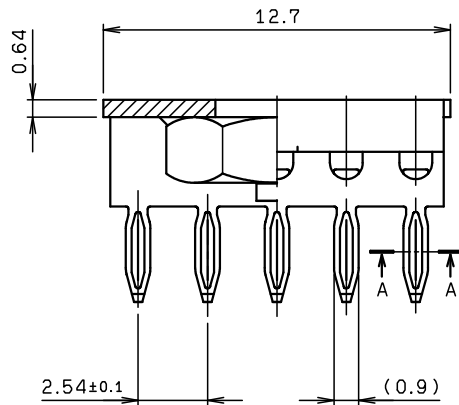


NO.	DESCRIPTION	PART NO.	QTY	MATERIAL	DRW NO.	REMARKS
1	POWER INSERT		1	COPPER ALLOY		UNDER COAT Ni Sn-Cu
2	NUT		1			JIS B1181 M4. 3種



仕 様			
P/F仕様 適用基板	基板厚	1.6MIN.	2.3MIN.
	下穴径	φ0.9±0.025	
	銅めっき厚	25~65μm	25~50μm
	はんだめっき厚	—	7.6μmMIN.
DIP仕様 適用基板	仕上げ径	φ0.8±0.05	φ0.8 <sup>+0.05</sup> <sub>-0.1</sub>
	仕上げ径	φ1.35±0.1	



ROHS規制対応  
COMPLIANT WITH  
ROHS REGULATIONS

TOLERANCE / 一般公差 (S)		PRODUCT SPEC / 製品規格							
X < 10	±0.2			A	DCN-336	5-23-11			
10 ≤ X < 30	±0.25	UNIT	ANGLE	O	EDN-553	4-22-05	Y. AYUKAWA	Y. SHIROYAMA	K. HONDA
30 ≤ X	±0.3	mm	3RD	NO.	EDN/DCN	DATE	ISSUE	CHECKED	APPROVED
ANGLE / 角度	±3°	SCALE	DATE	PART NAME / 品名					
		5:1	4-22-05	SERIES 9069					
DRAWN	DESIGNED	CHECKED	APPROVED	PARTS POWER INSERT ASSY 10P					
Y. AYUKAWA	Y. AYUKAWA	Y. SHIROYAMA	K. HONDA	PART NO. / 型番					
				60 9069 9007 10 800 +					
				DWG NO. / 図番				SHEET/REV	
				BJS 9069011				1/1 A	