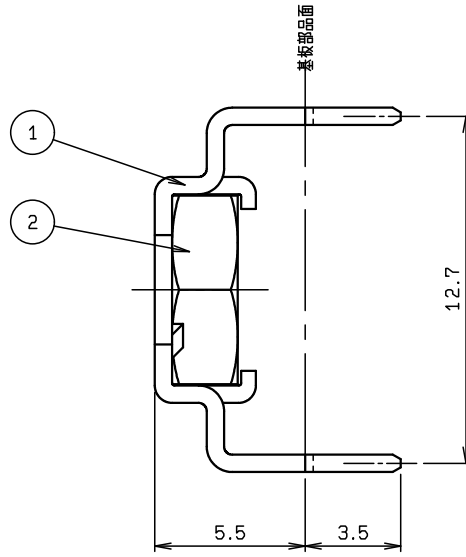
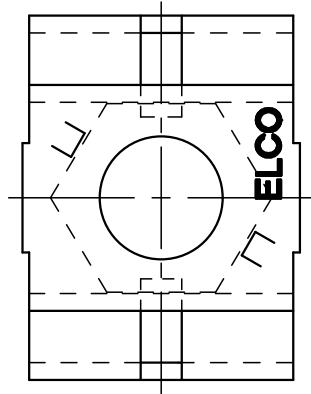
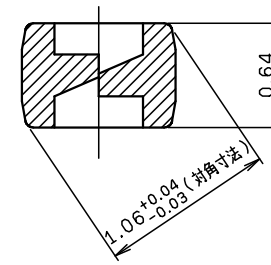
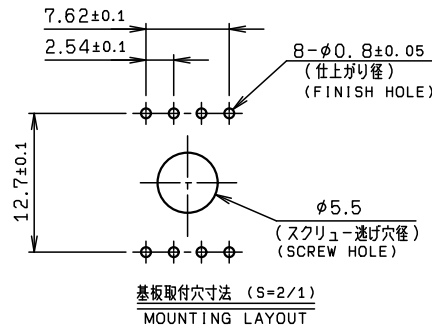
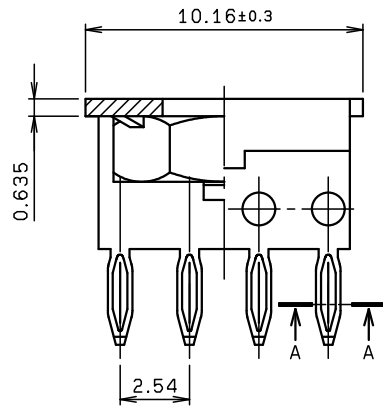


NO.	DESCRIPTION	PART NO.	QTY	MATERIAL	DRW NO.	REMARKS
1	POWER INSERT		1	COPPER ALLOY		
2	NUT		1			JIS B1181 M4.3種



仕様 SPECIFICATION		
めっき PLATING	Ni UNDER COAT: 1.5μmMIN. Sn-Cu : 3μmMIN.	
定格電流 CURRENT RATING	24A MAX.	
適用基板厚 APPLICABLE BOARD THICKNESS	t=2.3MIN.	
適用スルーホール APPLICABLE THROUGH HOLE	下穴径 DRILLED HOLE : φ0.9±0.03 銅めっき厚 : 25~50μm Cu PLATED 仕上げ径 : φ0.8±0.05 FINISH HOLE	
挿入力 INSERTION FORCE	196N (20Kgf) MAX. / Pin	
保持力 RETENTION FORCE	29.4N (3Kgf) MIN. / Pin	
締付トルク TIGHTENING TORQUE	147N.cm (15Kgf.cm) MAX.	
重量 WEIGHT	1.6g	
使用環境 USE ENVIRONMENT	温度 TEMPERATURE	-55°C~+105°C (おだし自己発熱分を含む) (INCLUDING SELF-HEATING)
	湿度 HUMIDITY	10~90%



SECT. A-A (S=30/1)

ROHS規制対応
COMPLIANT WITH
ROHS REGULATIONS

TOLERANCE / 一般公差 (S)		PRODUCT SPEC / 製品規格					
X < 10	±0.2	UNIT	ANGLE	A	DCN-448	4-25-06	
10 ≤ X < 30	±0.25	mm	3RD	O	EDN-337	3-22-05	M. SASAKI Y. SHIROYAMA N. HAYASHI
30 ≤ X	±0.3	SCALE	DATE	NO.	EDN/DCN	DATE	ISSUE
ANGLE / 角度	±3°	5 : 1	3-22-05	PART NAME / 品名			
DRAWN	DESIGNED	CHECKED	APPROVED	SERIES 9069 POWER INSERT			
L I	M. SASAKI	Y. SHIROYAMA	N. HAYASHI	φ0.8 8P			
				PART NO. / 型番			
				60 9069 9007 08 800 +			
				DWG NO. / 図番			
				BJS 9069008			
				SHEET REV			
				1 / 1 A			