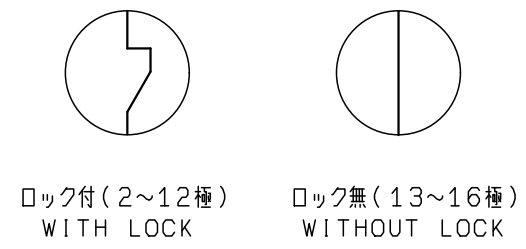
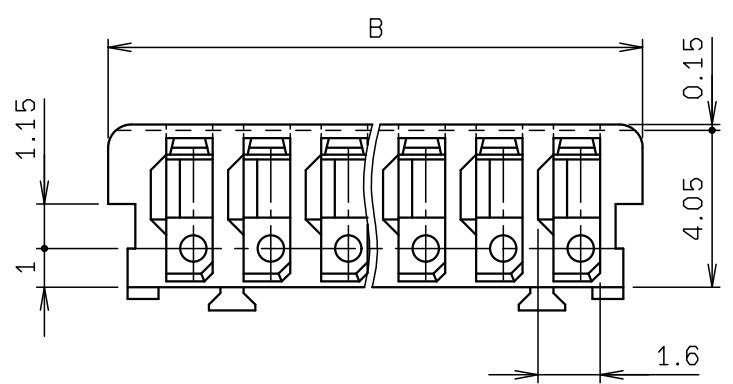
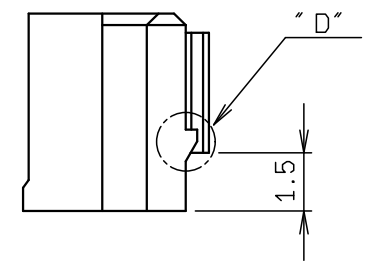
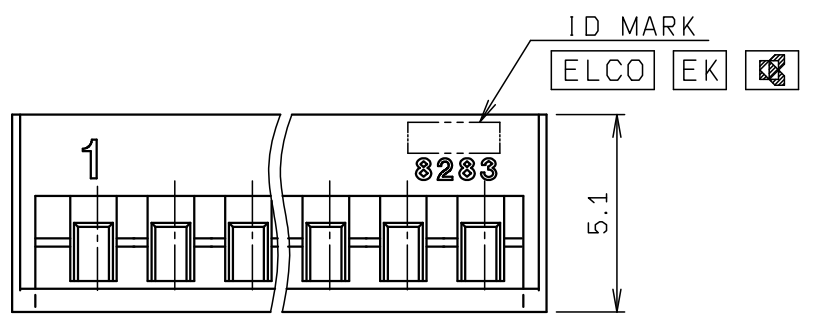
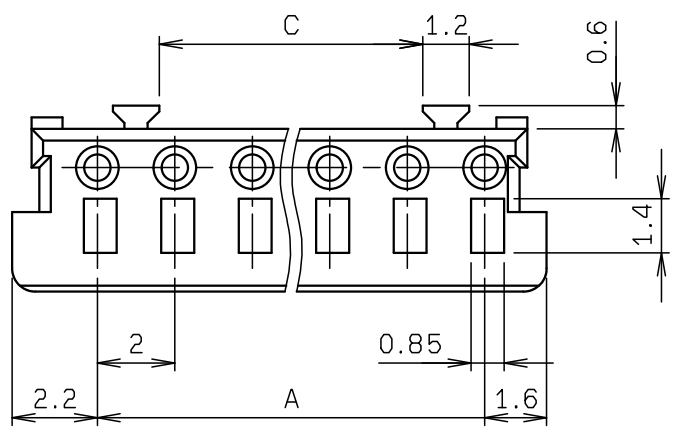


NO.	DESCRIPTION	PART NO.	QTY	MATERIAL	DRW NO.	REMARKS
-----	-------------	----------	-----	----------	---------	---------

極数 NO. OF POS.	A	B	C	リブ位置 RIB POSITION
2	2.0	5.8	—	1&2
3	4.0	7.8	—	2
4	6.0	9.8	2.8	1&2, 3&4
5	8.0	11.8	4.8	1&2, 4&5
6	10.0	13.8	6.8	1&2, 5&6
7	12.0	15.8	8.8	1&2, 6&7
8	14.0	17.8	10.8	1&2, 7&8
9	16.0	19.8	12.8	1&2, 8&9
10	18.0	21.8	14.8	1&2, 9&10
11	20.0	23.8	16.8	1&2, 10&11
12	22.0	25.8	18.8	1&2, 11&12
13	24.0	27.8	20.8	1&2, 12&13
14	26.0	29.8	22.8	1&2, 13&14
15	28.0	31.8	24.8	1&2, 14&15
16	30.0	33.8	26.8	1&2, 15&16



DETAIL "D"

注記
NOTE

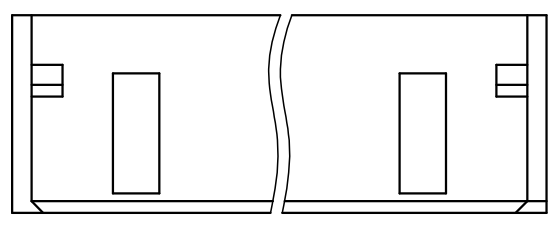
1. 型番
P/N 60 8283 3XX8 45 XXX

極数
NO. OF POS.

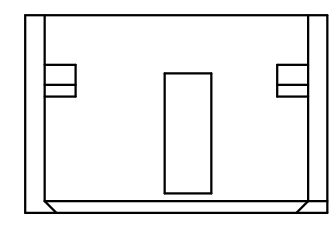
色
COLOR

000 : 自然色 (NATURAL)
001 : 黒色 (BLACK)
002 : 赤色 (RED)
003 : 黄色 (YELLOW)

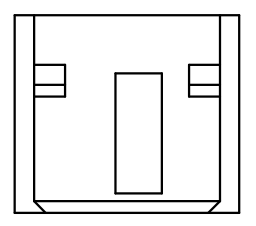
2. 使用材料 : PA66, UL94V-0,
MATERIAL : PA66, UL94V-0



4P~16P



3P



2P

ROHS規制対応
COMPLIANT WITH
ROHS REGULATIONS

TOLERANCE / 一般公差(S) ±0.3	PRODUCT SPEC / 製品規格		E	DCN19953	2019/09/18	R. ARAI	M. YOSHIDA	
			D	DCN-089	2015/01/23	H. TAMAI	H. SADATOKU	
	UNIT		O	EDN-391	1989/09/28	KAMEOKA	S. SUZUKI	
	mm	ANGLE	NO.	EDN/DCN	DATE	ISSUE	CHECKED	
SCALE	DATE	PART NAME / 品名					APPROVED	
N/T	1995/07/11	SERIES 8283						
		2mm PITCH REC INS (HOUSING LANCE TYPE)						
DRAWN	DESIGNED	CHECKED	APPROVED	PART NO. / 型番				
K. SUZUKI	K. SAWAKUMA		M. AOKI	60 8283 3XX8 45 XXX				
				DWG NO. / 図番		SHEET/REV		
REV. AIZTCAD入力				BJS 8283613		1/1 E		

© 2019 KYOCERA Corporation