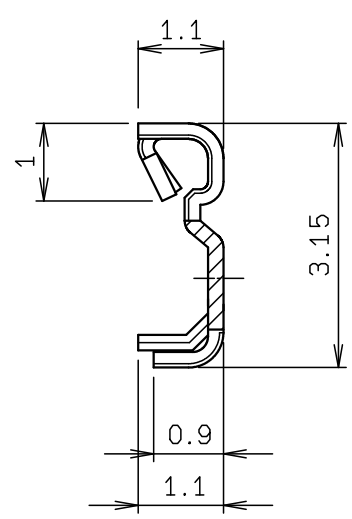
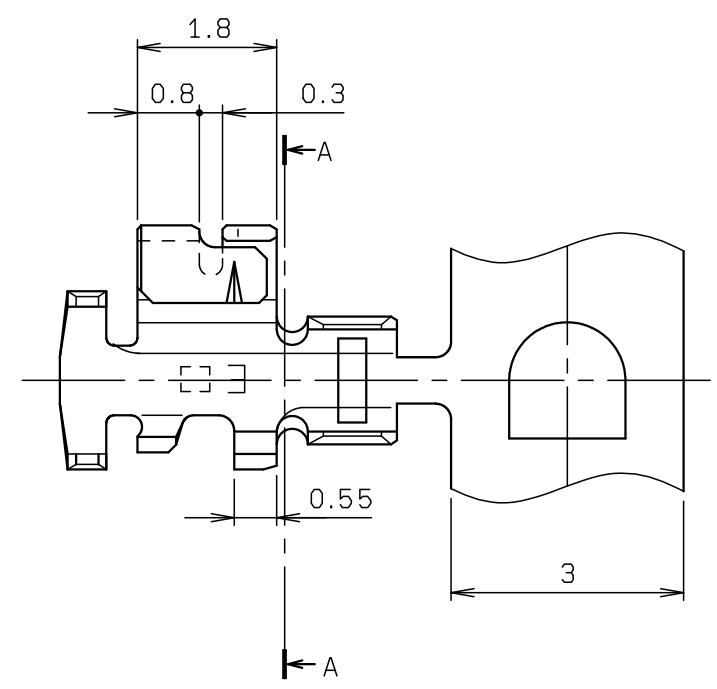


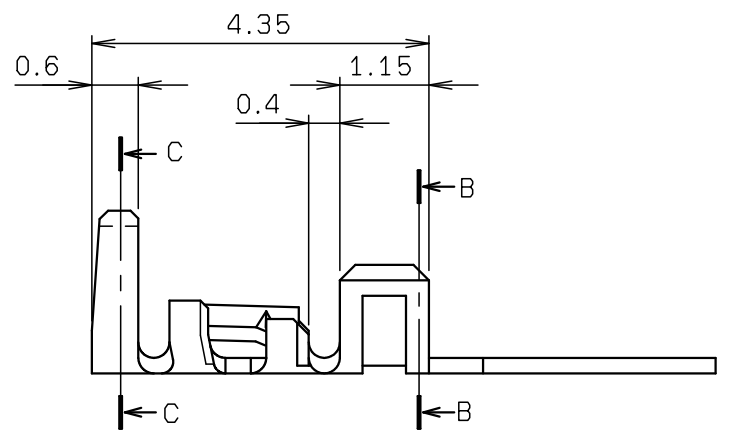
NO.	DESCRIPTION	PART NO.	QTY	MATERIAL	DRW NO.	REMARKS
-----	-------------	----------	-----	----------	---------	---------



SECT. A-A

注記
NOTE

1. 使用材料 リン青銅 , t=0.2mm 錫めっき
MATERIAL PHOS-BRONZE 0.2THK. TIN(REFLOW)



形状 FORM	圧着機用 連鎖状 Crimping Machine Chain	手動工具用 キマリア カット状 Crimping Pliers Loose	被覆外形 Ins. DIA.	適用電線範囲 Wire Range	被覆バレル SECT. C-C	芯線バレル SECT. B-B	圧着後外觀 Fig. After Crimped
型番 Part No.	60 8283 3513 99 808	60 8283 3513 30 808	φ1.3mm MAX.	#22~26			
	60 8283 0513 99 808	60 8283 0513 30 808	φ1.3mm MAX.	#24~30			
	60 8283 2513 99 808	60 8283 2513 30 808	φ1mm MAX.	#32			
包装単位 Packing Qty.	20000	100					

ROHS規制対応
COMPLIANT WITH
ROHS REGULATIONS

REV. CE7CAD入力

TOLERANCE / 一般公差(S) ±0.3	PRODUCT SPEC / 製品規格		D	DCN19953	2019/09/18	R. ARAI		M. YOSHIDA
	UNIT		C	DCN-698	2001/07/27	H. IKARI		H. TAKANO
	mm	ANGLE	O	EDN-891	1989/09/28	R. KAMEOKA	S. SUZUKI	K. HONDA
	3RD	NO.	EDN/DCN	DATE	ISSUE	CHECKED	APPROVED	
SCALE	DATE	PART NAME / 品名						
NIS	2001/07/26	SERIES 8283						
		REC CONT (TIN)						
DRAWN	DESIGNED	CHECKED	APPROVED	PART NO. / 型番				
Y. OISHI	H. IKARI		H. TAKANO	60 8283 X513 XX 808				
DWG NO. / 図番				SHEET/REV				
BJS 8283513				1/1 D				



© 2019 KYOCERA Corporation