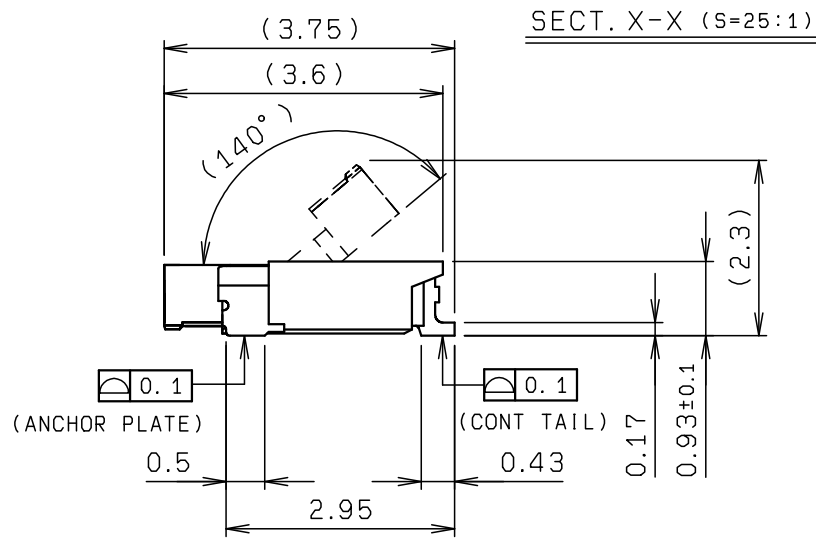
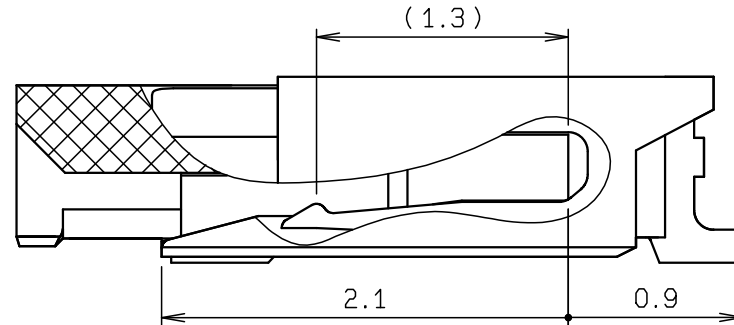
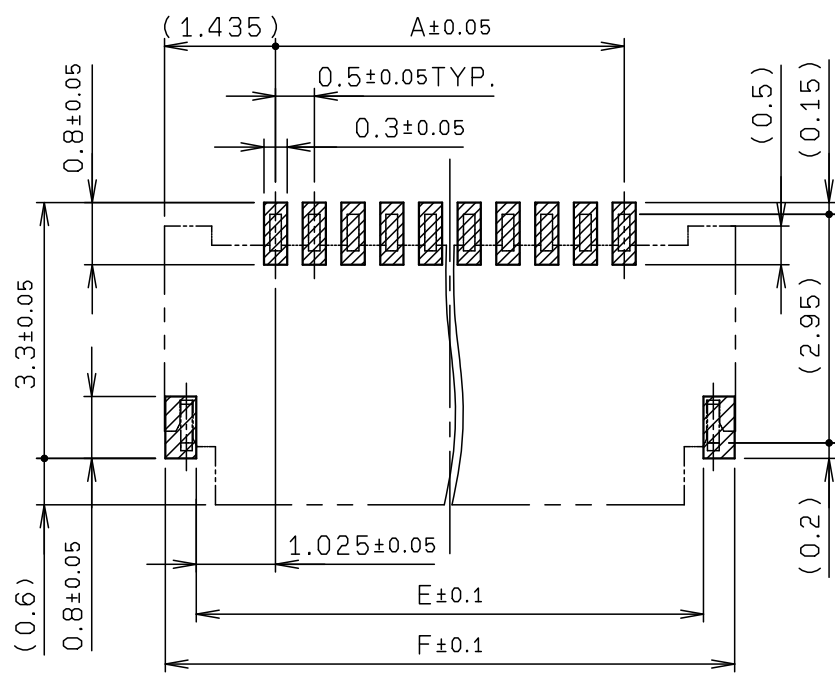
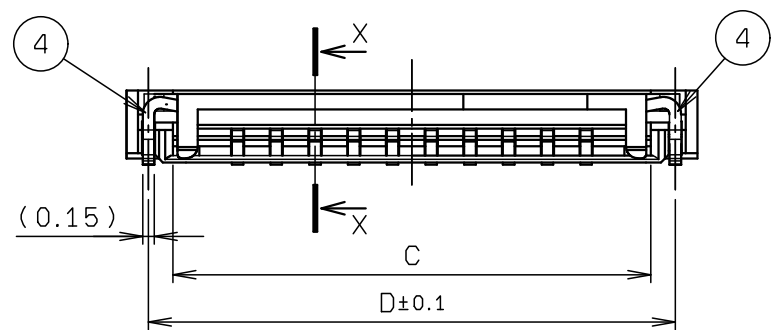
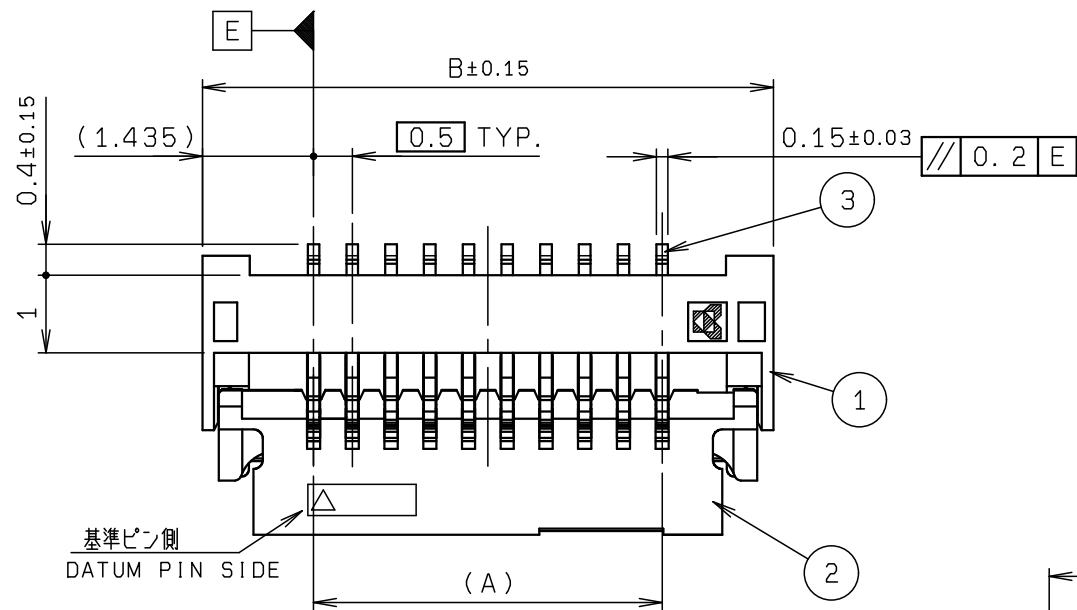


耳欠きケーブル用 標準ケーブルタイプ(CABLE TYPE X10)
STANDARD TYPE FOR NOTCH CABLE



型番 P/N 04 6809 6XX X10 846 +
6: ハロゲンフリー HALOGEN-Free
極数 NO. OF POS.
エンボスバリエーション EMBOSS VARIATION
ケーブルタイプ CABLE TYPE
1: 標準タイプ STANDARD TYPE FOR NOTCH CABLE
めっきコード PLATING CODE
846+: Au(SELECTIVE) (ANCHOR PLATE Sn-Cu)

HALOGEN-Free

ROHS規制対応
COMPLIANT WITH
ROHS REGULATIONS

NO.	DESCRIPTION	PART NO.	QTY	MATERIAL	DRW NO.	REMARKS
1	INSULATOR		1	HEAT RESISTANCE PLASTIC		UL94V-0 COLOR:NATURAL (WHITE)
2	ACTUATOR		1	HEAT RESISTANCE PLASTIC		UL94V-0 COLOR:BLACK
3	CONTACT		N	COPPER ALLOY		t=0.15 AU
4	ANCHOR PLATE		2	COPPER ALLOY		t=0.15 Sn-Cu

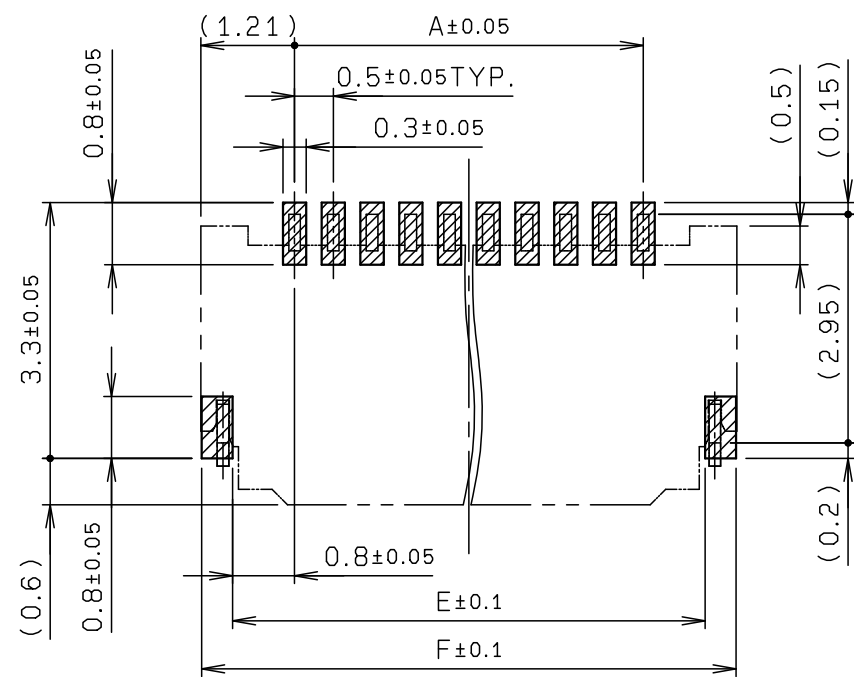
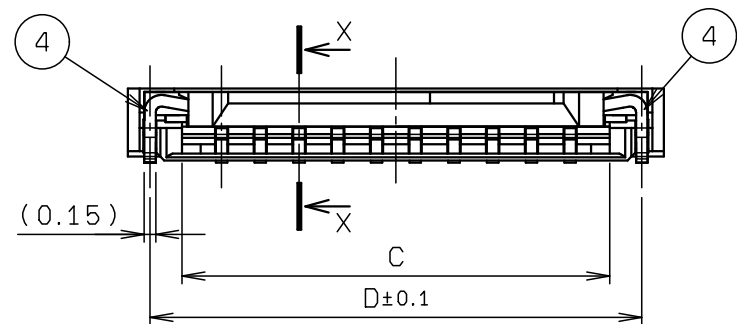
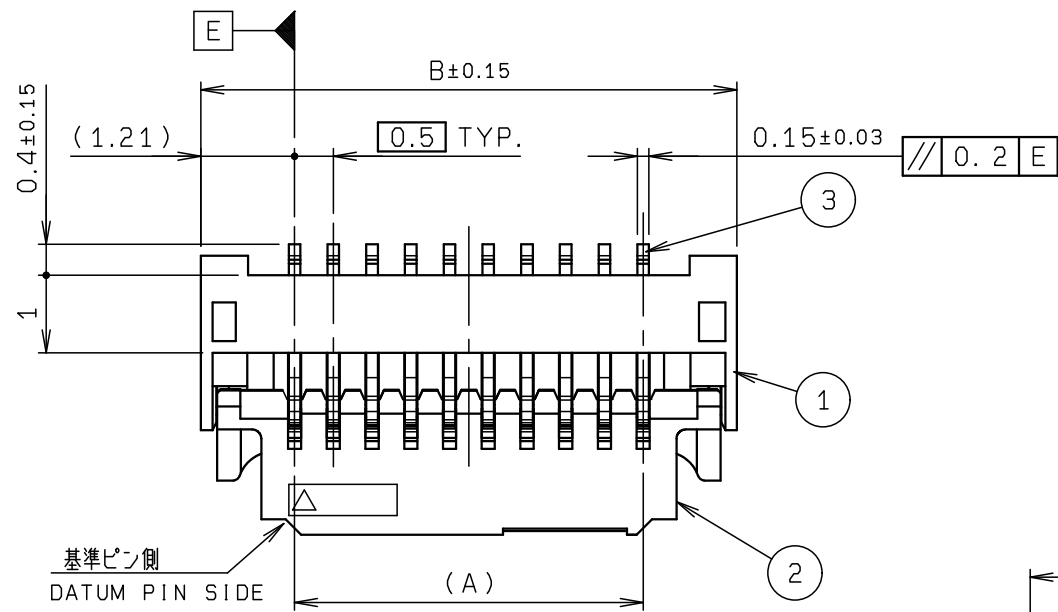
極数 NO. OF POS.	A	B	C	D	E	F
4	1.5	4.37	3.17	3.80	3.55	4.35
5	2.0	4.87	3.67	4.30	4.05	4.85
6	2.5	5.37	4.17	4.80	4.55	5.35
7	3.0	5.87	4.67	5.30	5.05	5.85
8	3.5	6.37	5.17	5.80	5.55	6.35
9	4.0	6.87	5.67	6.30	6.05	6.85
10	4.5	7.37	6.17	6.80	6.55	7.35
11	5.0	7.87	6.67	7.30	7.05	7.85
12	5.5	8.37	7.17	7.80	7.55	8.35
13	6.0	8.87	7.67	8.30	8.05	8.85
14	6.5	9.37	8.17	8.80	8.55	9.35
15	7.0	9.87	8.67	9.30	9.05	9.85
16	7.5	10.37	9.17	9.80	9.55	10.35
17	8.0	10.87	9.67	10.30	10.05	10.85
18	8.5	11.37	10.17	10.80	10.55	11.35
19	9.0	11.87	10.67	11.30	11.05	11.85
20	9.5	12.37	11.17	11.80	11.55	12.35
21	10.0	12.87	11.67	12.30	12.05	12.85
22	10.5	13.37	12.17	12.80	12.55	13.35
23	11.0	13.87	12.67	13.30	13.05	13.85
24	11.5	14.37	13.17	13.80	13.55	14.35
25	12.0	14.87	13.67	14.30	14.05	14.85
26	12.5	15.37	14.17	14.80	14.55	15.35
27	13.0	15.87	14.67	15.30	15.05	15.85
28	13.5	16.37	15.17	15.80	15.55	16.35
29	14.0	16.87	15.67	16.30	16.05	16.85
30	14.5	17.37	16.17	16.80	16.55	17.35
31	15.0	17.87	16.67	17.30	17.05	17.85
32	15.5	18.37	17.17	17.80	17.55	18.35
33	16.0	18.87	17.67	18.30	18.05	18.85
34	16.5	19.37	18.17	18.80	18.55	19.35
35	17.0	19.87	18.67	19.30	19.05	19.85
36	17.5	20.37	19.17	19.80	19.55	20.35
37	18.0	20.87	19.67	20.30	20.05	20.85
38	18.5	21.37	20.17	20.80	20.55	21.35
39	19.0	21.87	20.67	21.30	21.05	21.85
40	19.5	22.37	21.17	21.80	21.55	22.35

※この表は1ページ目のみ適用
※THIS CHART IS APPLICABLE TO SHEET-1 ONLY.

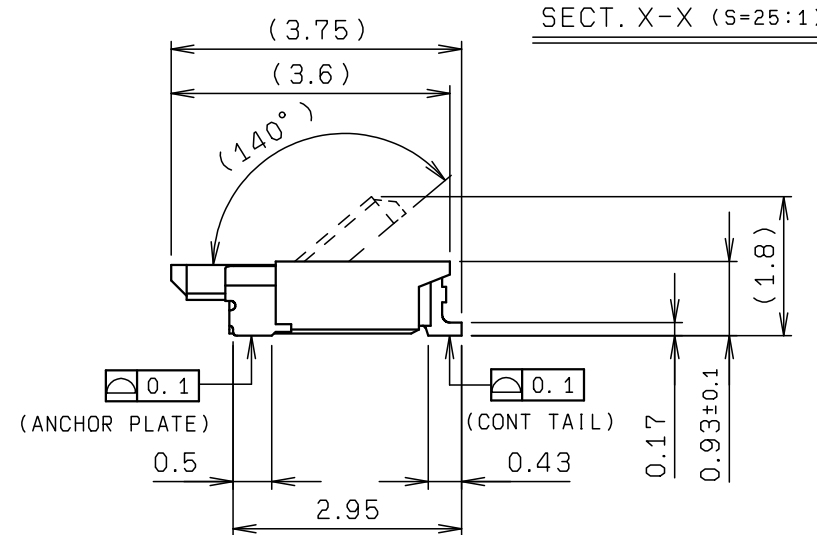
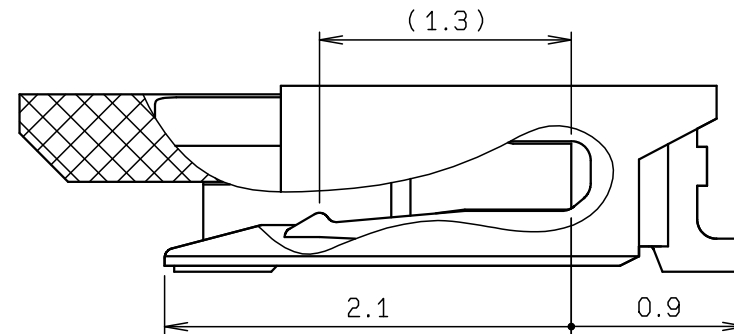
TOLERANCE / 一般公差(S)		PRODUCT SPEC / 製品規格		P		
X < 10	±0.2	UNIT	ANGLE	DCN23023	2023/01/20	R. NAKAJIMA
10 ≤ X < 30	±0.25	mm	3RD	DCN22687	2022/12/08	R. NAKAJIMA
30 ≤ X	±0.3	SCALE	DATE	EDN-108	2014/03/10	Y. MANBA
ANGLE / 角度	±3°	10:1	2014/03/10	NO.	EDN/DCN	DATE
DRAWN Y. MANBA		DESIGNED Y. MANBA	CHECKED	ISSUE	CHECKED	APPROVED
APPROVED Y. FUJII		PART NAME / 品名		FPC/FFC CONNECTOR ASSY RA SMT		
PART NO. / 型番		04 6809 6XX XX0 846 +		0.5mm PITCH ZIF TYPE		
DWG NO. / 図番		BJS 6809004		SHEET/REV		
				1/6 P		

ストレートケーブル用 標準タイプ (CABLE TYPE X20)

STANDARD TYPE FOR STRAIGHT CABLE



推奨パターン寸法
RECOMMENDED PATTERN LAYOUT



型番 P/N 04 6809 6XX X20 846 +

6: ハロゲンフリー
HALOGEN-Free

極数 NO. OF POS.

エンボスバリエーション
EMBOSS VARIATION

ケーブルタイプ
CABLE TYPE

2: ストレートケーブルタイプ
STANDARD TYPE FOR STRAIGHT CABLE

めっきコード
PLATING CODE

846+: Au(SELECTIVE)
(ANCHOR PLATE Sn-Cu)

HALOGEN-Free

ROHS規制対応
COMPLIANT WITH
ROHS REGULATIONS

NO.	DESCRIPTION	PART NO.	QTY	MATERIAL	DRW NO.	REMARKS
1	INSULATOR		1	HEAT RESISTANCE PLASTIC		UL94V-0 COLOR:NATURAL (WHITE)
2	ACTUATOR		1	HEAT RESISTANCE PLASTIC		UL94V-0 COLOR:BLACK
3	CONTACT		N	COPPER ALLOY		t=0.15 AU
4	ANCHOR PLATE		2	COPPER ALLOY		t=0.15 Sn-Cu

極数 NO. OF POS.	A	B	C	D	E	F
4	1.5	3.92	2.52	3.35	3.1	3.9
5	2.0	4.42	3.02	3.85	3.6	4.4
6	2.5	4.92	3.52	4.35	4.1	4.9
7	3.0	5.42	4.02	4.85	4.6	5.4
8	3.5	5.92	4.52	5.35	5.1	5.9
9	4.0	6.42	5.02	5.85	5.6	6.4
10	4.5	6.92	5.52	6.35	6.1	6.9
11	5.0	7.42	6.02	6.85	6.6	7.4
12	5.5	7.92	6.52	7.35	7.1	7.9
13	6.0	8.42	7.02	7.85	7.6	8.4
14	6.5	8.92	7.52	8.35	8.1	8.9
15	7.0	9.42	8.02	8.85	8.6	9.4
16	7.5	9.92	8.52	9.35	9.1	9.9
17	8.0	10.42	9.02	9.85	9.6	10.4
18	8.5	10.92	9.52	10.35	10.1	10.9
19	9.0	11.42	10.02	10.85	10.6	11.4
20	9.5	11.92	10.52	11.35	11.1	11.9
21	10.0	12.42	11.02	11.85	11.6	12.4
22	10.5	12.92	11.52	12.35	12.1	12.9
23	11.0	13.42	12.02	12.85	12.6	13.4
24	11.5	13.92	12.52	13.35	13.1	13.9
25	12.0	14.42	13.02	13.85	13.6	14.4
26	12.5	14.92	13.52	14.35	14.1	14.9
27	13.0	15.42	14.02	14.85	14.6	15.4
28	13.5	15.92	14.52	15.35	15.1	15.9
29	14.0	16.42	15.02	15.85	15.6	16.4
30	14.5	16.92	15.52	16.35	16.1	16.9
31	15.0	17.42	16.02	16.85	16.6	17.4
32	15.5	17.92	16.52	17.35	17.1	17.9
33	16.0	18.42	17.02	17.85	17.6	18.4
34	16.5	18.92	17.52	18.35	18.1	18.9
35	17.0	19.42	18.02	18.85	18.6	19.4
36	17.5	19.92	18.52	19.35	19.1	19.9
37	18.0	20.42	19.02	19.85	19.6	20.4
38	18.5	20.92	19.52	20.35	20.1	20.9
39	19.0	21.42	20.02	20.85	20.6	21.4
40	19.5	21.92	20.52	21.35	21.1	21.9

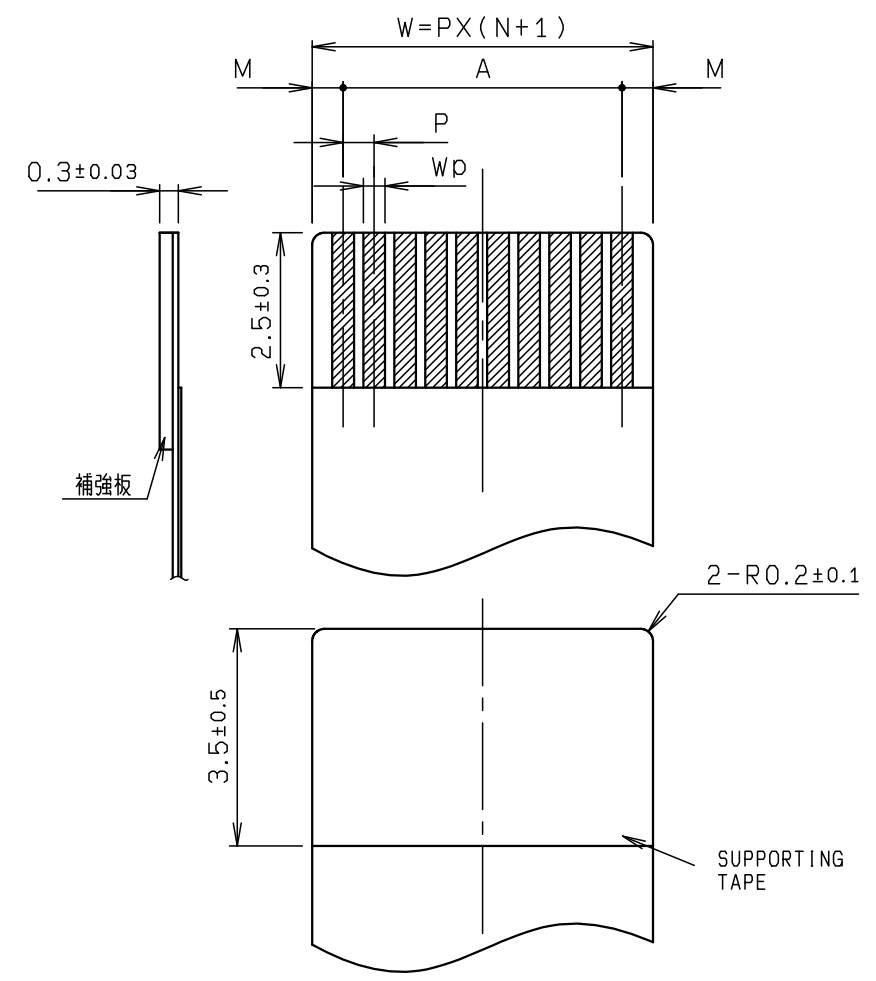
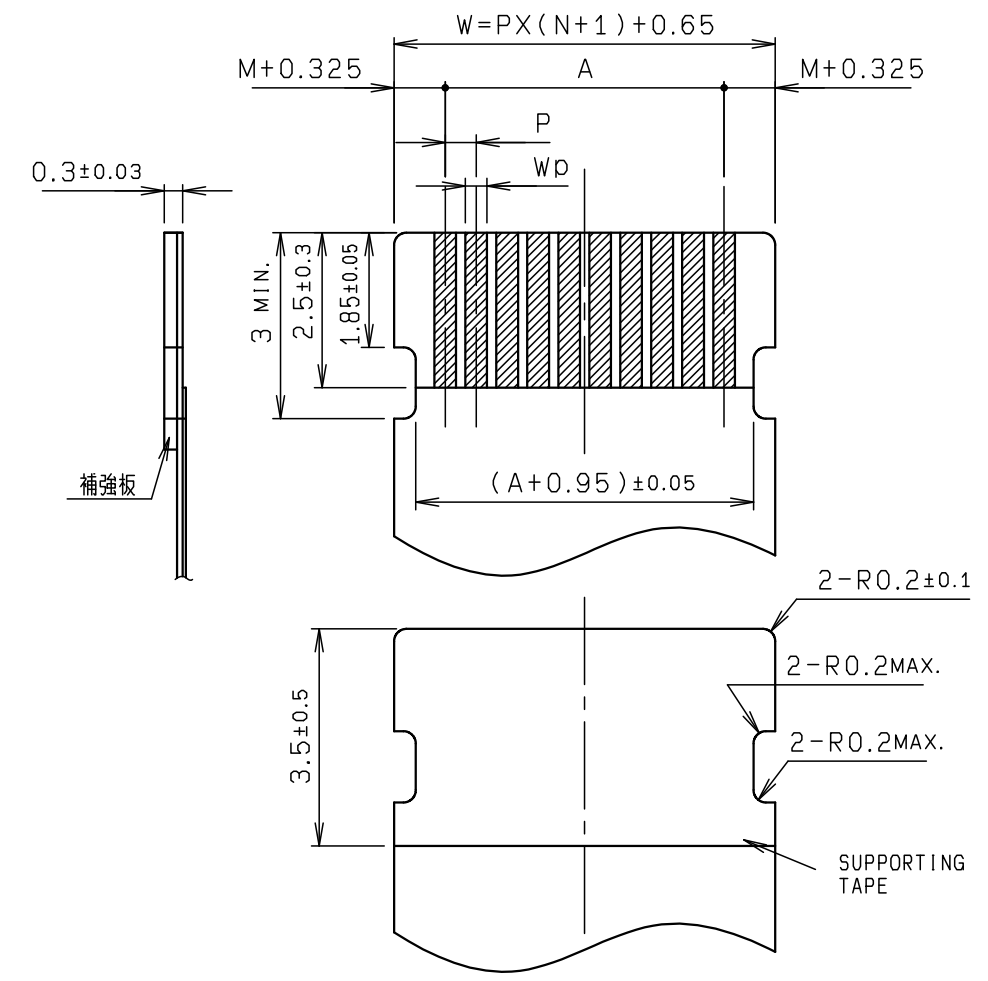
※この表は2ページ目のみ適用
※THIS CHART IS APPLICABLE TO SHEET-2 ONLY.

TOLERANCE / 一般公差(S)		PRODUCT SPEC / 製品規格		REFER TO SHEET 1/6	
X < 10	±0.2	UNIT	ANGLE	NO.	EDN/DCN
10 ≤ X < 30	±0.25	mm	3RD	DATE	ISSUE
30 ≤ X	±0.3	SCALE	DATE	CHECKED	APPROVED
ANGLE / 角度	±3°	10:1	2014/03/10	PART NAME / 品名	
DRAWN	DESIGNED	CHECKED	APPROVED	FPC/FFC CONNECTOR ASSY RA SMT	
Y. MANBA	Y. MANBA		Y. FUJII	0.5mm PITCH ZIF TYPE	
DRAWN				PART NO. / 型番	
DESIGNED				04 6809 6XX XX0 846 +	
CHECKED				DWG NO. / 図番	
APPROVED				BJS 6809004	
Y. FUJII				SHEET/REV	
KYOCERA				12/6 P	

NO.	DESCRIPTION	PART NO.	QTY	MATERIAL	DRW NO.	REMARKS
-----	-------------	----------	-----	----------	---------	---------

耳欠きケーブル用 標準タイプ
STANDARD TYPE FOR NOTCH CABLE
【CABLE TYPE X10】

ストレートケーブル用 標準タイプ
STANDARD TYPE FOR STRAIGHT CABLE
【CABLE TYPE X20】



適用FPC/FFC寸法
APPLICABLE FPC/FFC

注記
NOTE

- コンタクトテール及び固定金具は基板より最大浮き0.1mmとする。
CONTACT TAIL AND ANCHOR PLATE HEIGHT SHALL BE 0.1MAX.
- 適用FPC/FFC寸法は1か2を選択のこと。
SELECT AN APPLICABLE FPC/FFC FROM 1 OR 2.

	FPC		FFC	
	1	2	1	2
M	0.5±0.12	0.5±0.1	0.5±0.1	0.5±0.08
P	0.5±0.02	0.5±0.05	0.5±0.03	0.5±0.05
A	A±0.03	A±0.05	A±0.03	A±0.05
W	W±0.07	W±0.07	W±0.07	W±0.07
Wp	0.35 ^{+0.04} _{-0.03}	0.35±0.05	0.3 ^{+0.05} _{-0.02}	0.3 ^{+0.05} _{-0.02}

※この注記の1, 2は1~4ページ目にも適用
※THESE NOTES 1 AND 2 ARE APPLICABLE TO SHEET-1 TO 4 ONLY.

型番
P/N 04 6809 6XX XX0 846 +

6: ハロゲンフリー
HALOGEN-Free

種数
NO. OF POS.

エンボスバリエーション
EMBOSS VARIATION

ケーブルタイプ
CABLE TYPE

1: 標準タイプ
STANDARD TYPE FOR NOTCH CABLE

2: ストレートケーブルタイプ
STANDARD TYPE FOR STRAIGHT CABLE

めっきコード
PLATING CODE

846+: Au(SELECTIVE)
(ANCHOR PLATE Sn-Cu)

ROHS規制対応
COMPLIANT WITH
ROHS REGULATIONS

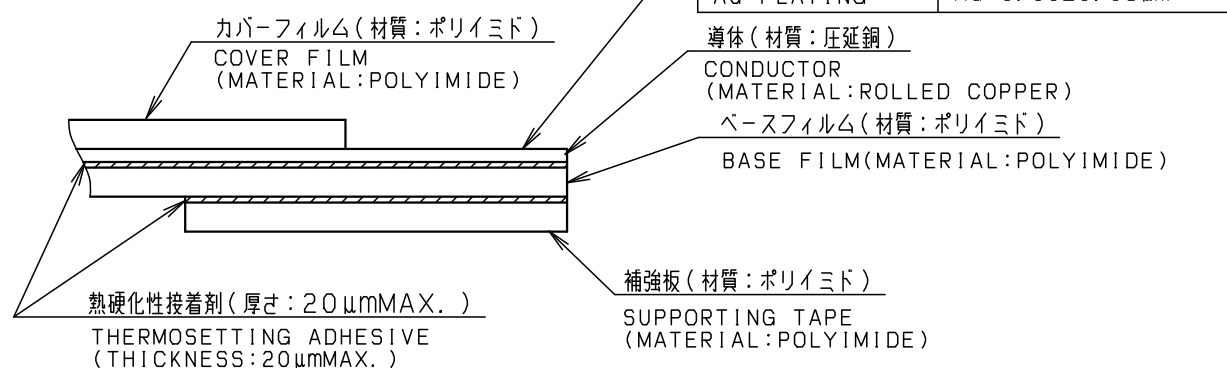
HALOGEN-Free

TOLERANCE / 一般公差(S)		PRODUCT SPEC / 製品規格		REFER TO SHEET 1/6	
X < 10	±0.2	UNIT	ANGLE	NO.	EDN/DCN
10 ≤ X < 30	±0.25	mm	3RD	DATE	ISSUE
30 ≤ X	±0.3	SCALE	DATE	CHECKED	APPROVED
ANGLE / 角度	±3°	8 : 1	2014/03/10	PART NAME / 品名	
DRAWN	DESIGNED	CHECKED	APPROVED	FPC/FFC CONNECTOR ASSY RA SMT	
Y. MANBA	Y. MANBA		Y. FUJII	0.5mm PITCH ZIF TYPE	
DRAWN				PART NO. / 型番	
DESIGNED				04 6809 6XX XX0 846 +	
CHECKED				DWG NO. / 図番	
APPROVED				BJS 6809004	
Y. FUJII				SHEET/REV	
KYOCERA				13/6 P	

NO.	DESCRIPTION	PART NO.	QTY	MATERIAL	DRW NO.	REMARKS
-----	-------------	----------	-----	----------	---------	---------

FPC構成
FPC STRUCTURE

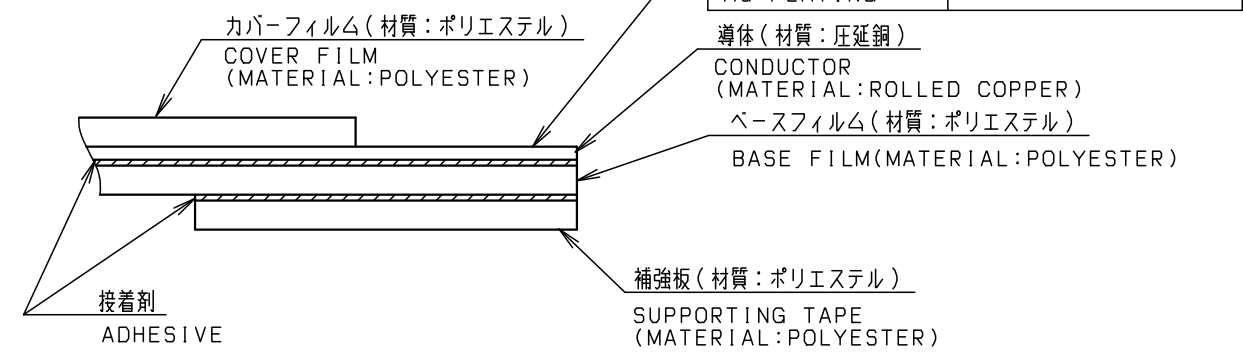
(推奨仕様)



表面処理 PLATING	仕様 SPECIFICATION
金めっき AU PLATING	Ni UNDER COAT Au: 0.06±0.03μm

FFC構成
FFC STRUCTURE

(推奨仕様)

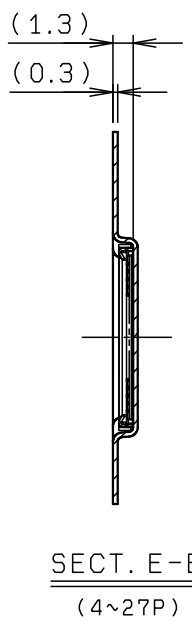
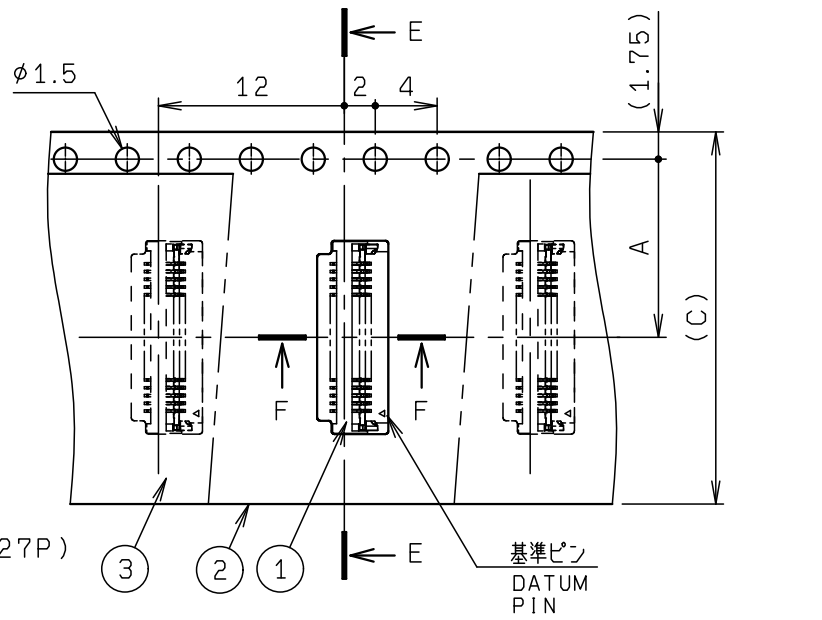


表面処理 PLATING	仕様 SPECIFICATION
金めっき AU PLATING	Ni UNDER COAT Au: 0.06±0.03μm

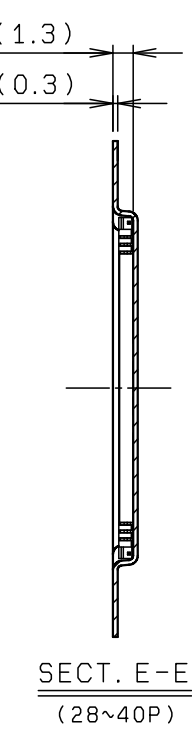
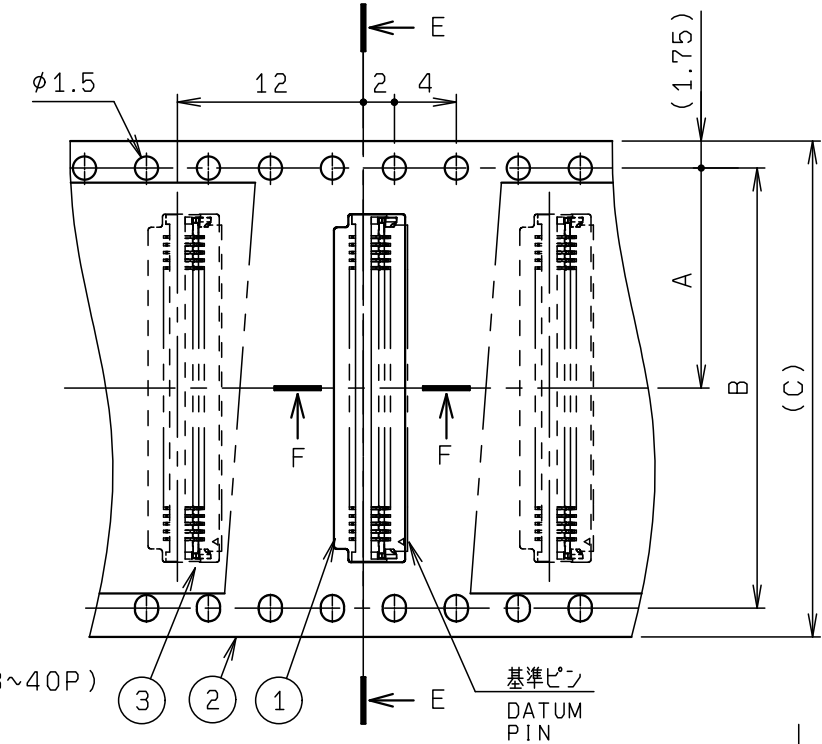
ROHS規制対応
COMPLIANT WITH
ROHS REGULATIONS

HALOGEN-Free

TOLERANCE / 一般公差 (S)		PRODUCT SPEC / 製品規格		REFER TO SHEET 1/6		
X < 10	±0.2	UNIT	ANGLE	NO.	EDN/DCN	DATE
10 ≤ X < 30	±0.25	mm	3RD	ISSUE	CHECKED	APPROVED
30 ≤ X	±0.3	SCALE	DATE	PART NAME / 品名		
ANGLE / 角度	±3°	NTS	2014/03/10	FPC/FFC CONNECTOR ASSY RA SMT 0.5mm PITCH ZIF TYPE		
DRAWN	DESIGNED	CHECKED	APPROVED	PART NO. / 型番		
Y. MANBA	Y. MANBA		Y. FUJII	04 6809 6XX XX0 846 +		
				DWG NO. / 図番		SHEET/REV
				BJS 6809004		14/6 P

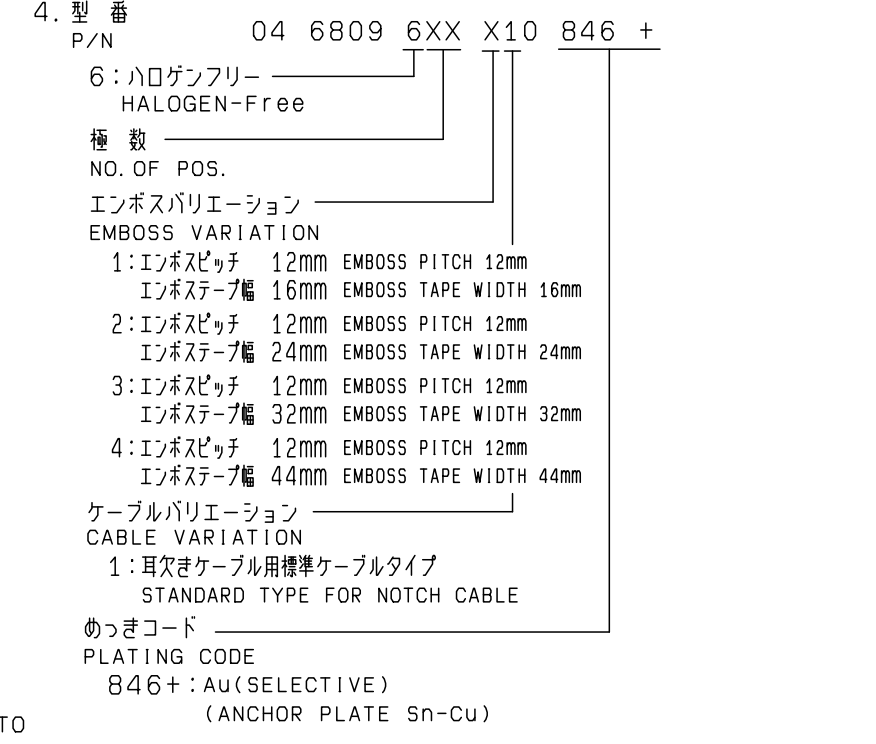
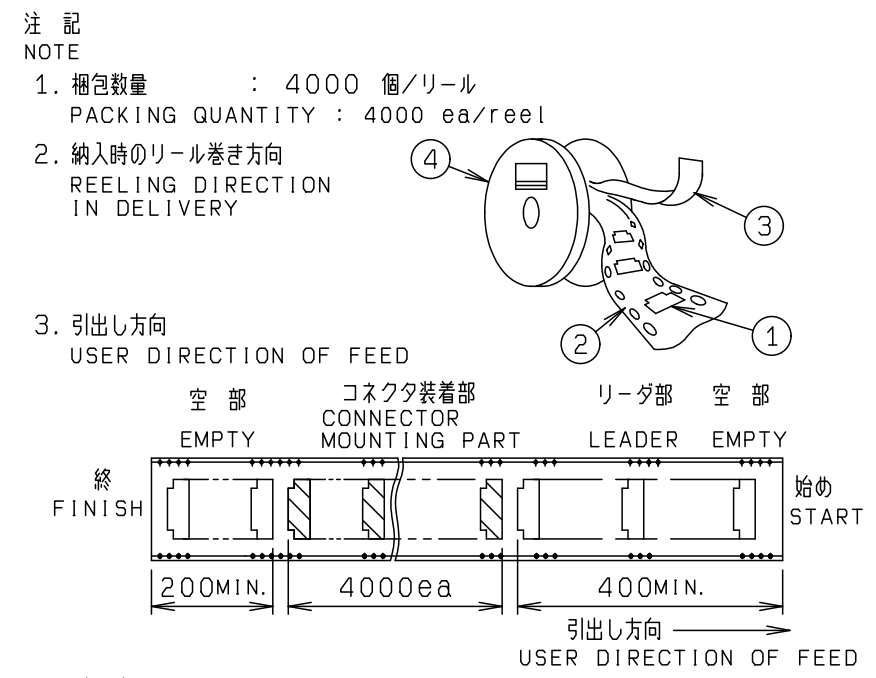


耳欠きケーブル用 標準ケーブルタイプ
(CABLE TYPE X10)
STANDARD TYPE FOR NOTCH CABLE



NO.	DESCRIPTION	PART NO.	QTY	MATERIAL	DRW NO.	REMARKS
1	CONNECTOR	04 6809 6XX X10 846 +	4000			00 6809 6XX 010 846 +
2	EMBOSSSED TAPE		1	POLYSTYRENE		
3	TOP COVER TAPE		1	POLYSTYRENE		
4	REEL		1	POLYSTYRENE		

種数 NO. OF POS.	A	B	C	D
4	7.5	—	16.0	22.4
5	7.5	—	16.0	22.4
6	7.5	—	16.0	22.4
7	7.5	—	16.0	22.4
8	7.5	—	16.0	22.4
9	7.5	—	16.0	22.4
10	7.5	—	16.0	22.4
11	7.5	—	16.0	22.4
12	7.5	—	16.0	22.4
13	7.5	—	16.0	22.4
14	11.5	—	24.0	30.4
15	11.5	—	24.0	30.4
16	11.5	—	24.0	30.4
17	11.5	—	24.0	30.4
18	11.5	—	24.0	30.4
19	11.5	—	24.0	30.4
20	11.5	—	24.0	30.4
21	11.5	—	24.0	30.4
22	11.5	—	24.0	30.4
23	11.5	—	24.0	30.4
24	11.5	—	24.0	30.4
25	11.5	—	24.0	30.4
26	11.5	—	24.0	30.4
27	11.5	—	24.0	30.4
28	14.2	28.4	32.0	38.4
29	14.2	28.4	32.0	38.4
30	14.2	28.4	32.0	38.4
31	14.2	28.4	32.0	38.4
32	14.2	28.4	32.0	38.4
33	14.2	28.4	32.0	38.4
34	14.2	28.4	32.0	38.4
35	14.2	28.4	32.0	38.4
36	14.2	28.4	32.0	38.4
37	14.2	28.4	32.0	38.4
38	20.2	40.4	44.0	50.4
39	20.2	40.4	44.0	50.4
40	20.2	40.4	44.0	50.4



※この表は5ページ目のみ適用
※THIS CHART IS APPLICABLE TO SHEET-5 ONLY.

※この注記は5ページ目のみ適用
※THIS NOTE IS APPLICABLE TO SHEET-5 ONLY.

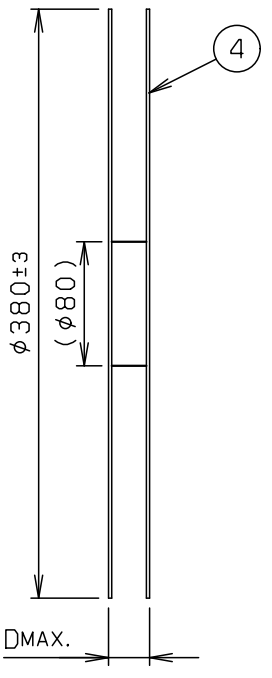
TOLERANCE / 一般公差(S)		PRODUCT SPEC / 製品規格		REFER TO SHEET 1/6	
X < 10	±0.2	UNIT	ANGLE	NO.	EDN/DCN
10 ≤ X < 30	±0.25	mm	3RD	DATE	ISSUE
30 ≤ X	±0.3	SCALE	DATE	CHECKED	APPROVED
ANGLE / 角度	±3°	2 : 1	2014/03/10	PART NAME / 品名	
DRAWN	DESIGNED	CHECKED	APPROVED	FPC/FFC CONNECTOR EMBOSS ASSY RA SMT	
Y. MANBA	Y. MANBA		Y. FUJII	0.5mm PITCH ZIF TYPE	
DRAWN / 型番				PART NO. / 型番	
Y. MANBA				04 6809 6XX XX0 846 +	
DWG NO. / 図番				DWG NO. / 図番	
BJS 6809004				BJS 6809004	
SHEET/REV				SHEET/REV	
15/6				15/6	

© 2023 KYOCERA Corporation

HALOGEN-Free

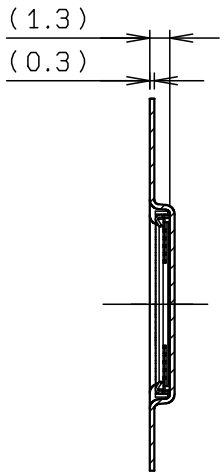
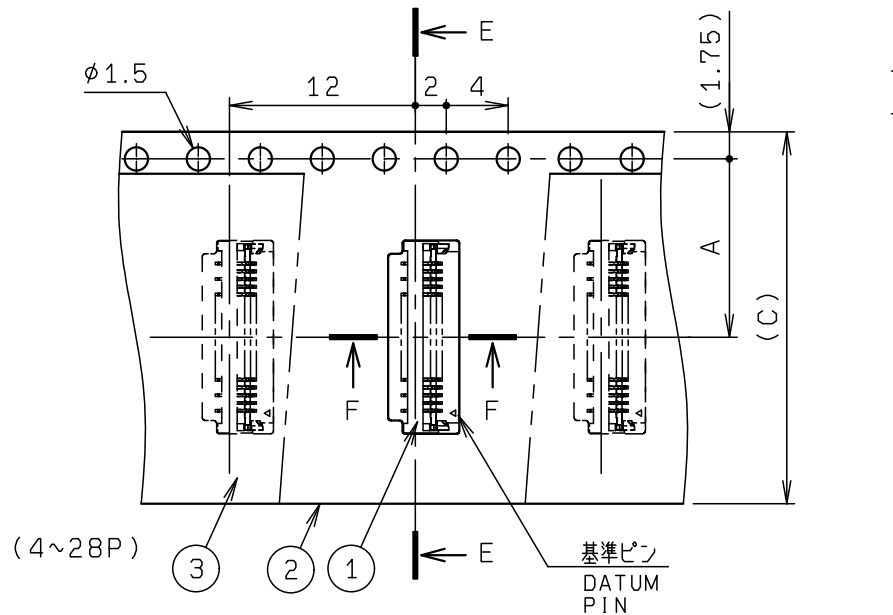
ROHS規制対応
COMPLIANT WITH
ROHS REGULATIONS

REEL DIMENSION (S=1:5)

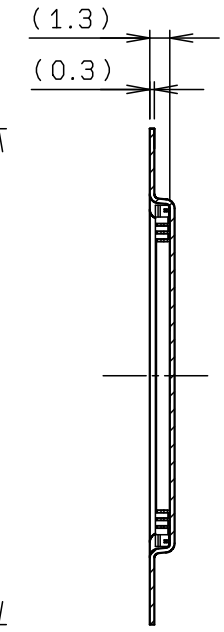
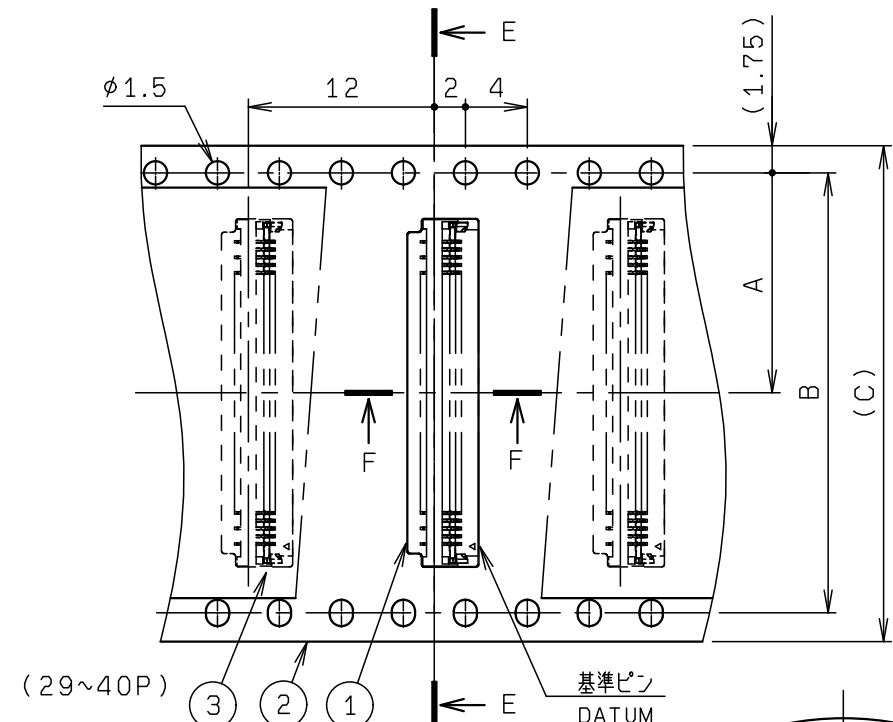


ストレートケーブル用 標準タイプ
(CABLE TYPE X20)
STANDARD TYPE FOR STRAIGHT CABLE

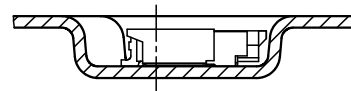
NO.	DESCRIPTION	PART NO.	QTY	MATERIAL	DRW NO.	REMARKS
1	CONNECTOR	04 6809 6XX X20 846 +	4000			00 6809 6XX 020 846 +
2	EMBOSSSED TAPE		1	POLYSTYRENE		
3	TOP COVER TAPE		1	POLYSTYRENE		
4	REEL		1	POLYSTYRENE		



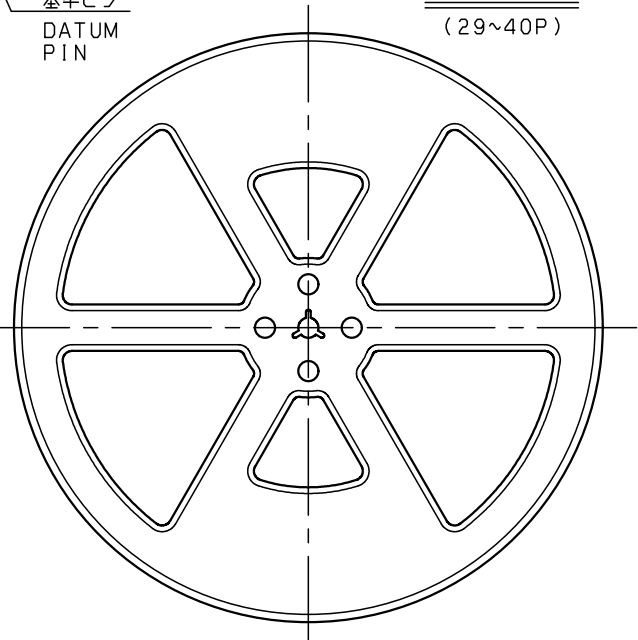
SECT. E-E
(4~28P)



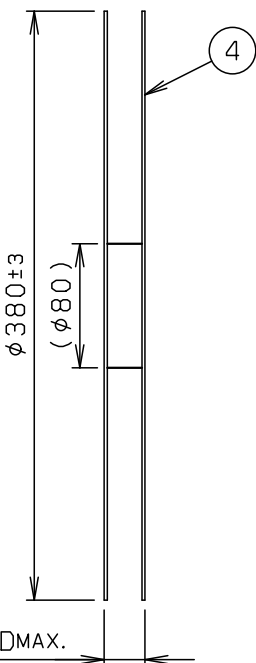
SECT. E-E
(29~40P)



SECT. E-E (S=5:1)



REEL DIMENSION (S=1:5)



φ380±3
(φ80)
D_{MAX.}

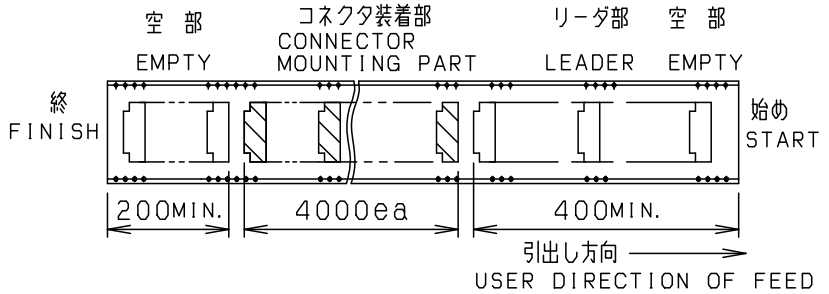
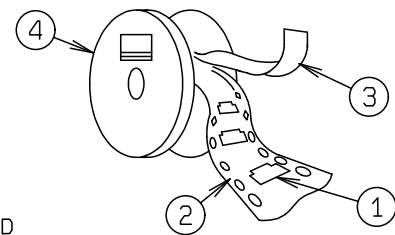
種数 NO. OF POS.	A	B	C	D
4	7.5	—	16.0	22.4
5	7.5	—	16.0	22.4
6	7.5	—	16.0	22.4
7	7.5	—	16.0	22.4
8	7.5	—	16.0	22.4
9	7.5	—	16.0	22.4
10	7.5	—	16.0	22.4
11	7.5	—	16.0	22.4
12	7.5	—	16.0	22.4
13	11.5	—	24.0	30.4
14	11.5	—	24.0	30.4
15	11.5	—	24.0	30.4
16	11.5	—	24.0	30.4
17	11.5	—	24.0	30.4
18	11.5	—	24.0	30.4
19	11.5	—	24.0	30.4
20	11.5	—	24.0	30.4
21	11.5	—	24.0	30.4
22	11.5	—	24.0	30.4
23	11.5	—	24.0	30.4
24	11.5	—	24.0	30.4
25	11.5	—	24.0	30.4
26	11.5	—	24.0	30.4
27	11.5	—	24.0	30.4
28	11.5	—	24.0	30.4
29	14.2	28.4	32.0	38.4
30	14.2	28.4	32.0	38.4
31	14.2	28.4	32.0	38.4
32	14.2	28.4	32.0	38.4
33	14.2	28.4	32.0	38.4
34	14.2	28.4	32.0	38.4
35	14.2	28.4	32.0	38.4
36	14.2	28.4	32.0	38.4
37	14.2	28.4	32.0	38.4
38	14.2	28.4	32.0	38.4
39	20.2	40.4	44.0	50.4
40	20.2	40.4	44.0	50.4

※この表は6ページ目のみ適用
※THIS CHART IS APPLICABLE TO SHEET-6 ONLY.

※この注記は6ページ目のみ適用
※THIS NOTE IS APPLICABLE TO SHEET-6 ONLY.

注記
NOTE

- 梱包数量 : 4000 個/リール
PACKING QUANTITY : 4000 ea/reel
- 納入時のリール巻き方向
REELING DIRECTION IN DELIVERY
- 引出し方向
USER DIRECTION OF FEED



- 型番 P/N: 04 6809 6XX X20 846 +
6: ハロゲンフリー HALOGEN-Free
種数 NO. OF POS.: エンボスバリエーション
EMBOSS VARIATION
1: インボスピッチ 12mm EMBOSS PITCH 12mm
インボステープ幅 16mm EMBOSS TAPE WIDTH 16mm
2: インボスピッチ 12mm EMBOSS PITCH 12mm
インボステープ幅 24mm EMBOSS TAPE WIDTH 24mm
3: インボスピッチ 12mm EMBOSS PITCH 12mm
インボステープ幅 32mm EMBOSS TAPE WIDTH 32mm
4: インボスピッチ 12mm EMBOSS PITCH 12mm
インボステープ幅 44mm EMBOSS TAPE WIDTH 44mm
ケーブルバリエーション CABLE VARIATION
2: ストレートケーブルタイプ
STANDARD TYPE FOR STRAIGHT CABLE
めっきコード PLATING CODE
846+: Au(SELECTIVE)
(ANCHOR PLATE Sn-Cu)

TOLERANCE / 一般公差(S)		PRODUCT SPEC / 製品規格		REFER TO SHEET 1/6	
X < 10	±0.2	UNIT	ANGLE	NO.	EDN/DCN
10 ≤ X < 30	±0.25	mm	3RD	DATE	ISSUE
30 ≤ X	±0.3	SCALE	DATE	CHECKED	APPROVED
ANGLE / 角度	±3°	2 : 1	2014/03/10	PART NAME / 品名	
DRAWN	DESIGNED	CHECKED	APPROVED	FPC/FFC CONNECTOR EMBOSS ASSY RA SMT	
Y. MANBA	Y. MANBA		Y. FUJII	0.5mm PITCH ZIF TYPE	
DRAWN				PART NO. / 型番	
DESIGNED				04 6809 6XX XX0 846 +	
CHECKED				DWG NO. / 図番	
APPROVED				BJS 6809004	
				SHEET/REV	
				16/6 P	



HALOGEN-Free

ROHS規制対応
COMPLIANT WITH
ROHS REGULATIONS