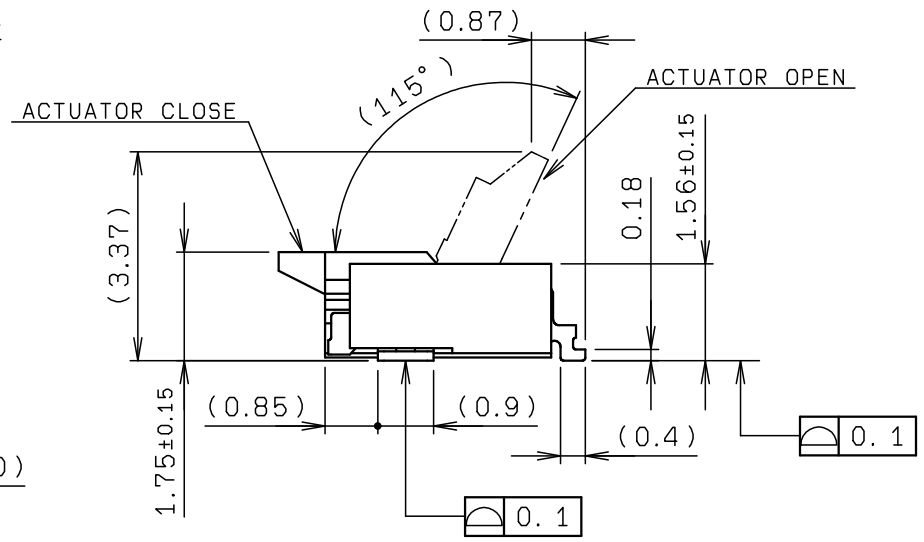
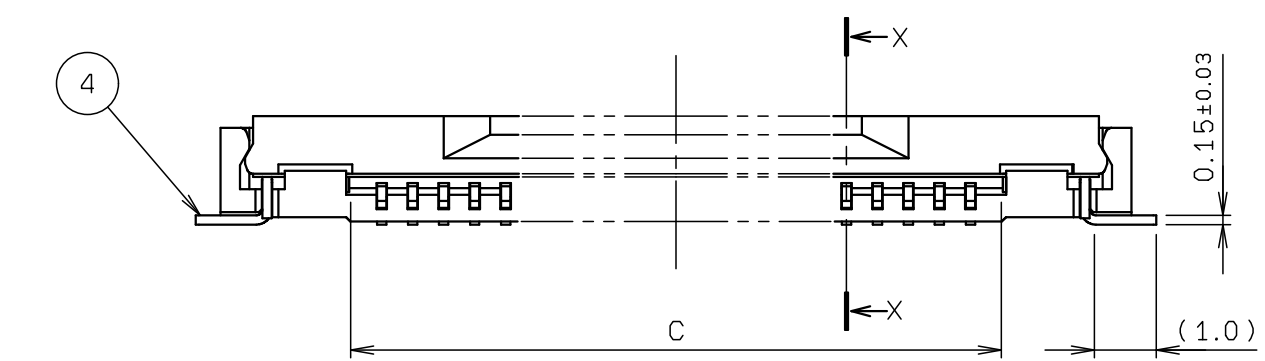
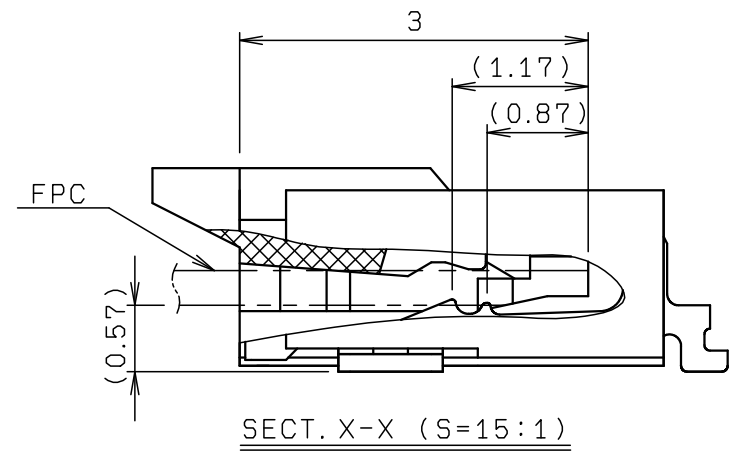
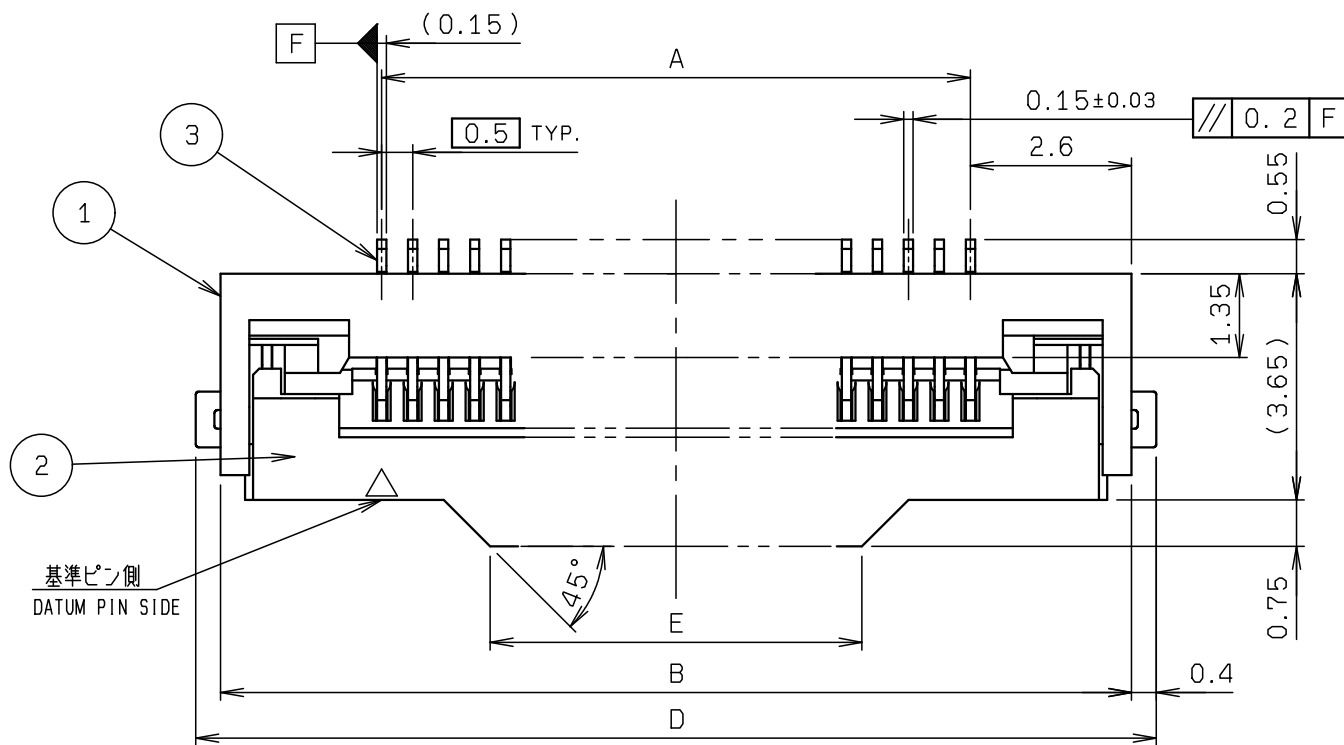
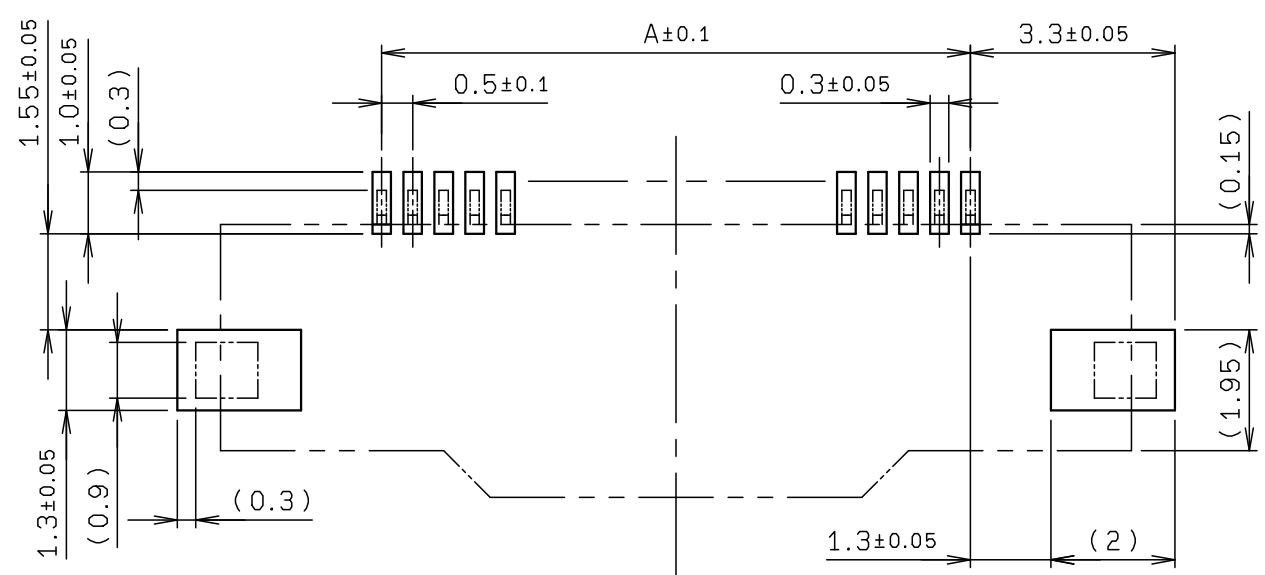


NO.	DESCRIPTION	PART NO.	QTY	MATERIAL	DRW NO.	REMARKS
1	INSULATOR		1	HEAT RESISTANCE PLASTIC		COLOR: WHITE UL94V-0
2	ACTUATOR		1	HEAT RESISTANCE PLASTIC		COLOR: BLACK UL94V-0
3	CONTACT		N	PHOS-BRONZE		t=0.15 AU PLATING
4	ANCHOR PLATE		2	PHOS-BRONZE		t=0.15 Sn-Cu PLATING



極数 NO. OF POS.	A	B	C	D	E
8	3.5	8.7	4.55	9.5	2.85
10	4.5	9.7	5.55	10.5	3.85
12	5.5	10.7	6.55	11.5	4.85
14	6.5	11.7	7.55	12.5	5.85
20	9.5	14.7	10.55	15.5	6.0
21	10.0	15.2	11.05	16.0	6.5
26	12.5	17.7	13.55	18.5	9.0
30	14.5	19.7	15.55	20.5	11.0
35	17.0	22.2	18.05	23.0	13.5
40	19.5	24.7	20.55	25.5	16.0
45	22.0	27.2	23.05	28.0	18.5
50	24.5	29.7	25.55	30.5	21.0
60	29.5	34.7	30.55	35.5	26.0
68	33.5	38.7	34.55	39.5	30.0
70	34.5	39.7	35.55	40.5	31.0
74	36.5	41.7	37.55	42.5	33.0
80	39.5	44.7	40.55	45.5	36.0

※この表は1, 2ページ目にのみ適用
 ※THIS CHART IS APPLICABLE TO SHEET-1 AND SHEET-2 ONLY.



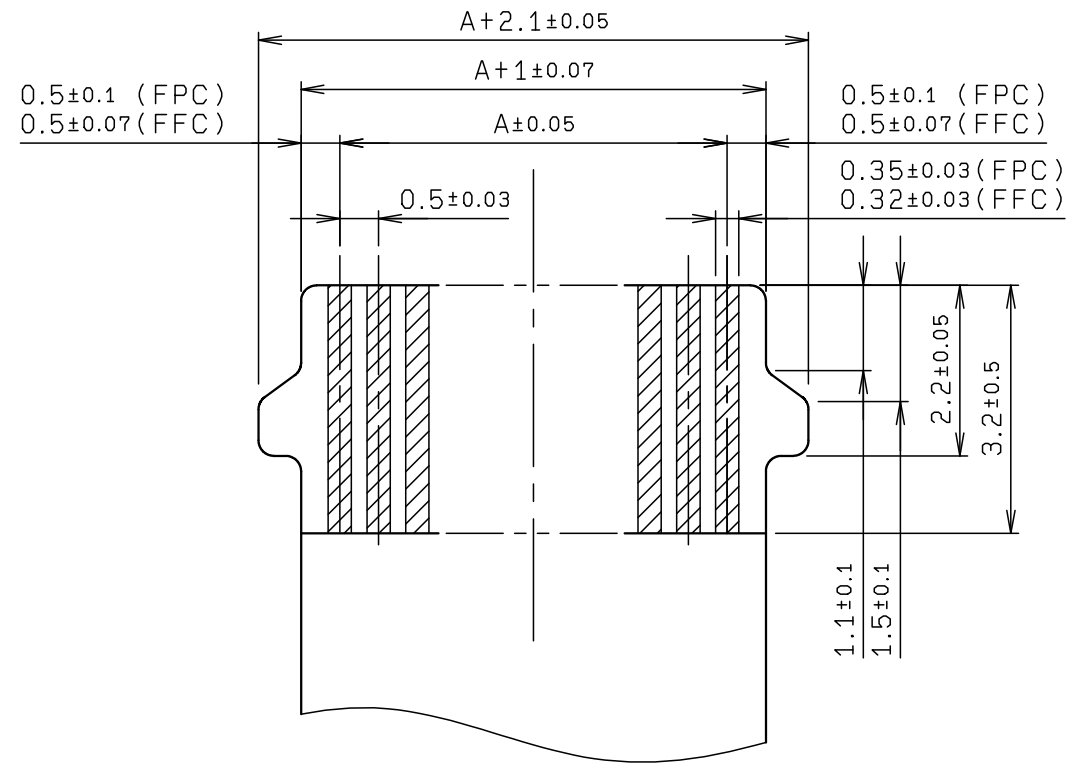
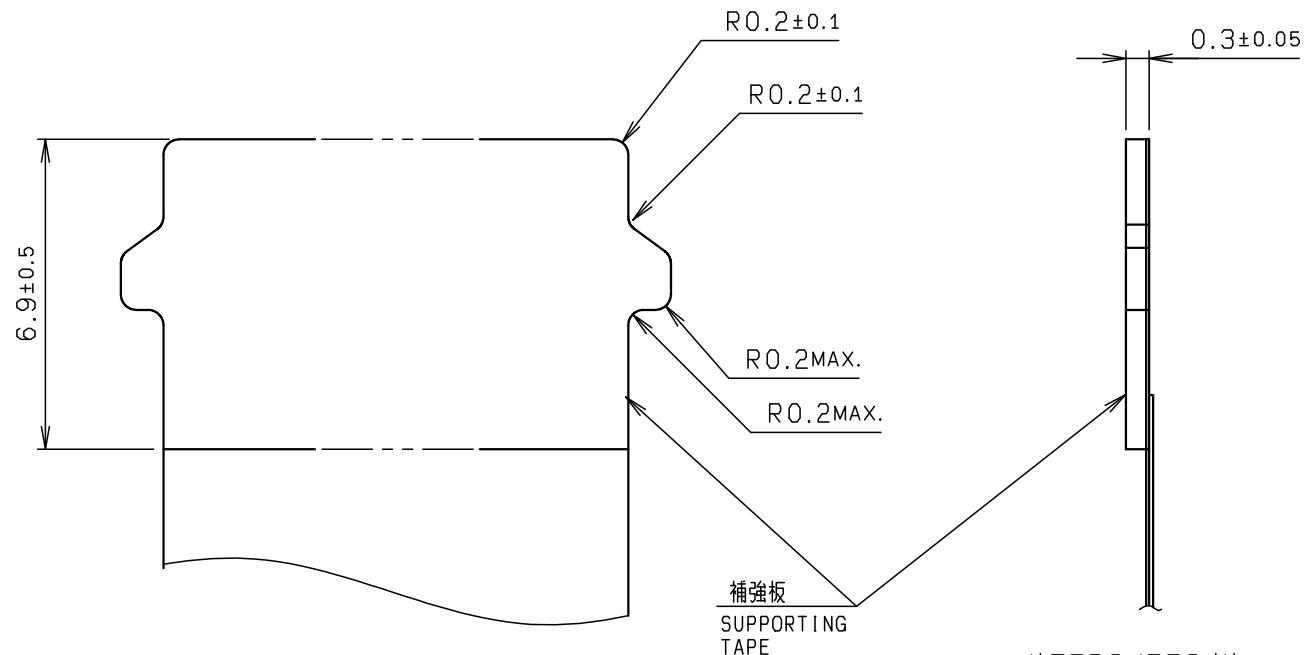
基板取付寸法
MOUNTING LAYOUT

ROHS規制対応
COMPLIANT WITH
ROHS REGULATIONS

TOLERANCE / 一般公差(S)		PRODUCT SPEC / 製品規格							
X < 10	±0.2	UNIT	ANGLE	A	DCN23318	2023/08/24	N. KITAGAWA	N. NAKAJIMA	
10 ≤ X < 30	±0.25	mm	3RD	O	EDN23062	2023/03/29	N. KITAGAWA	N. NAKAJIMA	
30 ≤ X	±0.3	SCALE	DATE	NO.	EDN/DCN	DATE	ISSUE	CHECKED	APPROVED
ANGLE / 角度	±3°	NTS	2023/03/29	PART NAME / 品名					
				FPC ASSY RA SMT					
				0.5mm PITCH ZIF TYPE BOTTOM CONTACT					
DRAWN	DESIGNED	CHECKED	APPROVED	PART NO. / 型番					
N. KITAGAWA	N. KITAGAWA		N. NAKAJIMA	04 6806 OXX 100 846 +					
				DWG NO. / 図番					
				BJS 6806055					
				SHEET		REV			
				1/3		A			

NO.	DESCRIPTION	PART NO.	QTY	MATERIAL	DRW NO.	REMARKS
-----	-------------	----------	-----	----------	---------	---------

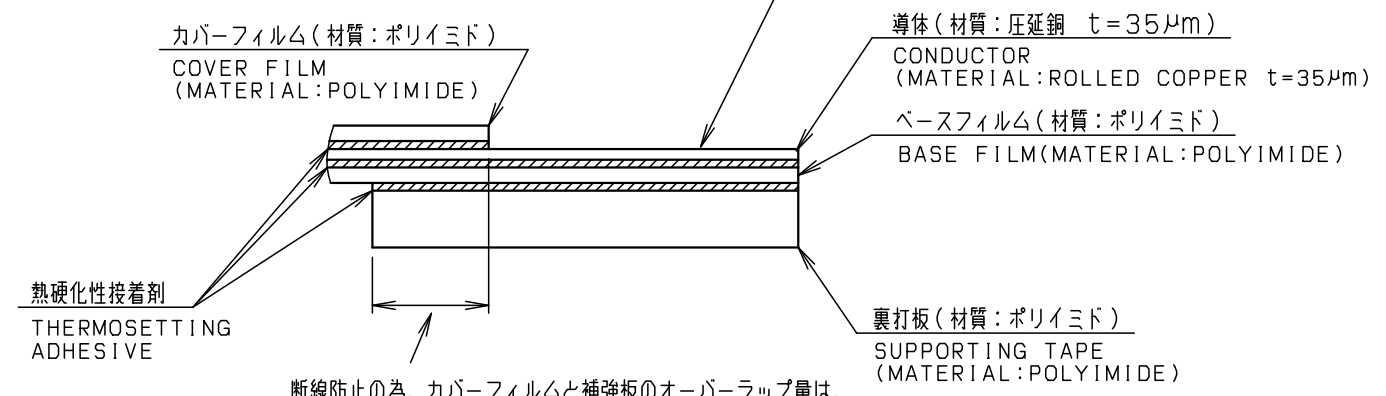
ROHS規制対応
COMPLIANT WITH
ROHS REGULATIONS



(推奨仕様)

FPC構成
FPC STRUCTURE

表面処理 PLATING	仕様 SPECIFICATION
金めっき AU PLATING	Ni UNDER COAT: 3±2μm AU: 0.06±0.03μm

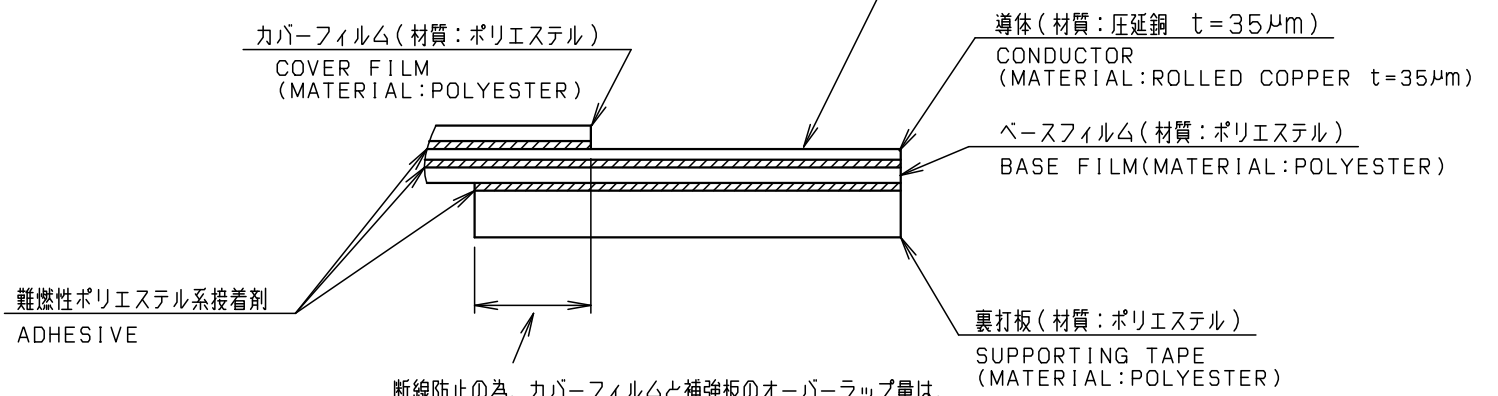


断線防止の為、カバーフィルムと補強板のオーバーラップ量は、1mm以上とする事を推奨します。
IN ORDER TO PREVENT OPEN CIRCUIT, 1mm OR MORE OF THE COVER FILM AND THE SUPPORTING PLATE SHALL BE OVERLAPPED.

(推奨仕様)

FFC構成
FFC STRUCTURE

表面処理 PLATING	仕様 SPECIFICATION
金めっき AU PLATING	Ni UNDER COAT: 0.5μmMIN. AU: 0.05μmMIN.



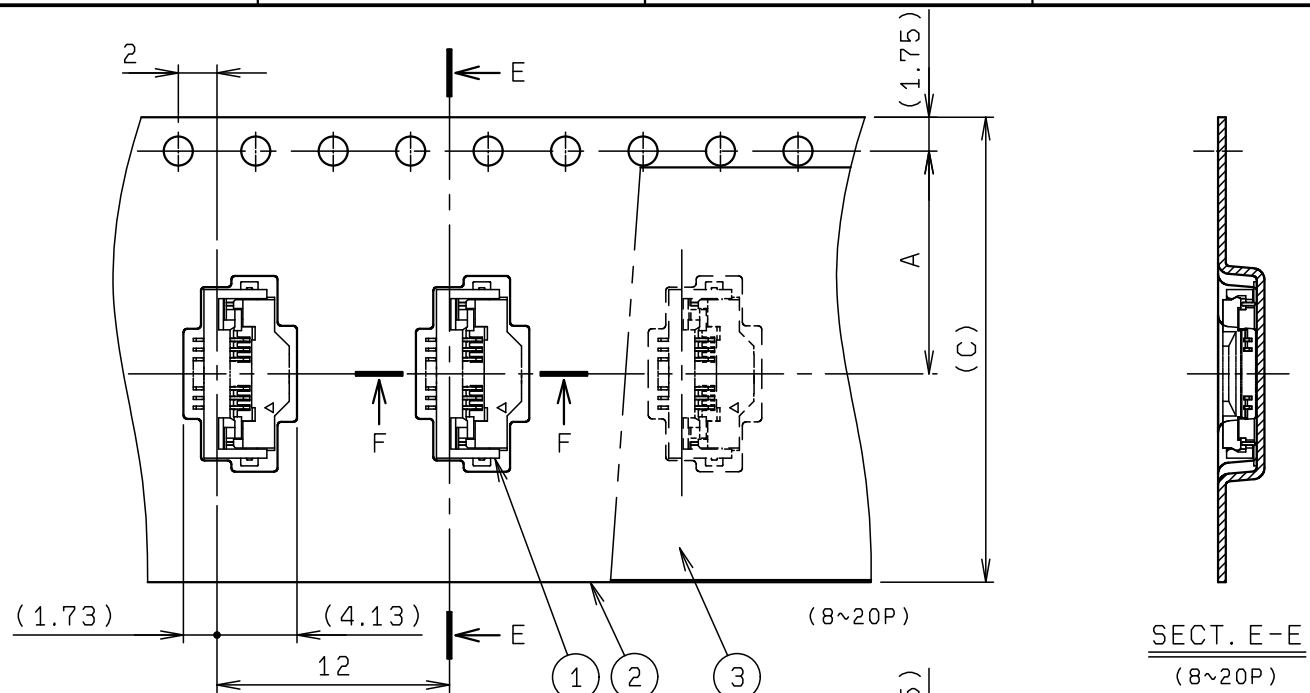
断線防止の為、カバーフィルムと補強板のオーバーラップ量は、1mm以上とする事を推奨します。
IN ORDER TO PREVENT OPEN CIRCUIT, 1mm OR MORE OF THE COVER FILM AND THE SUPPORTING PLATE SHALL BE OVERLAPPED.

注記
NOTE

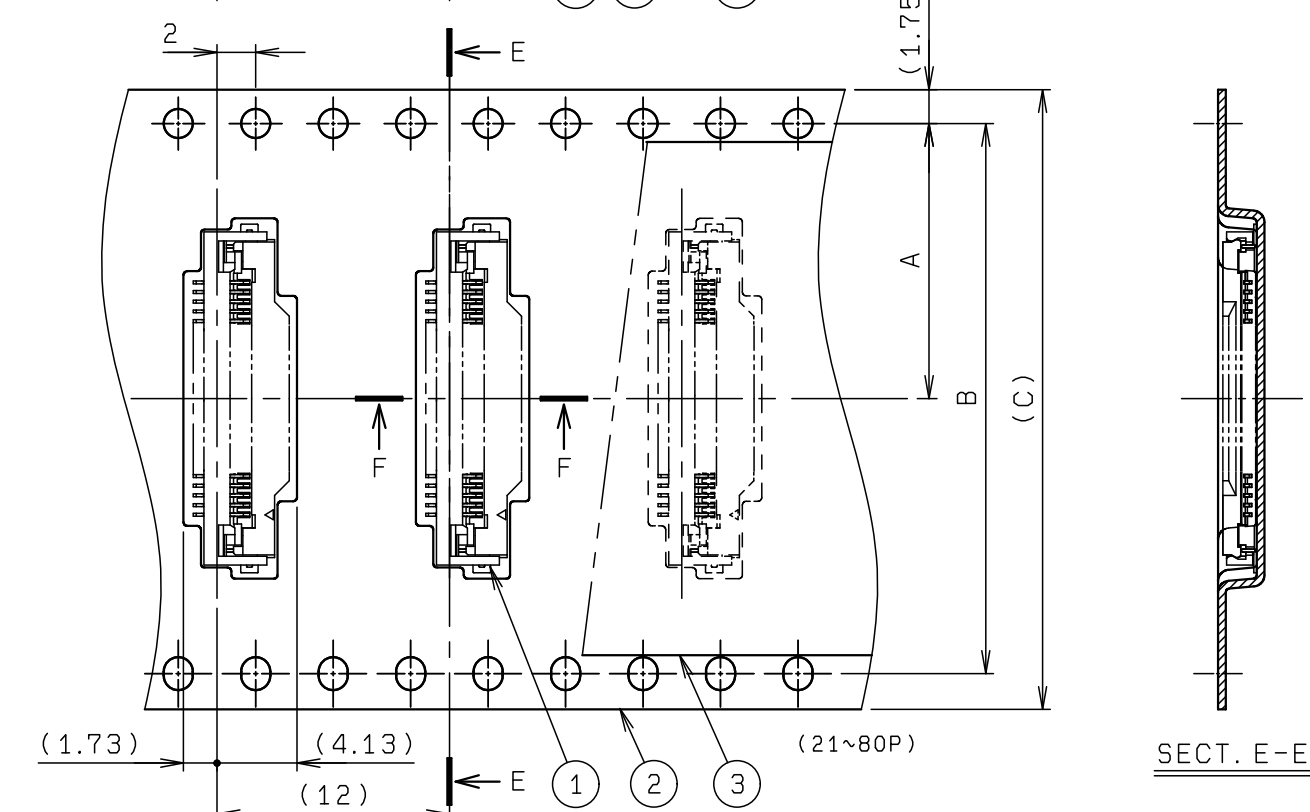
1. コンタクトテール及び固定金具は、基板より最大浮き0.1mmとする。
FLOATING FROM BOARD OF CONTACT TAIL AND ANCHOR PLATE SHALL BE 0.1mmMAX.
2. Nは、極数を示す。
N MEANS NUMBER OF PINS.

※この注記は1, 2ページ目にのみ適用
※THIS NOTE IS APPLICABLE TO SHEET-1 AND SHEET-2 ONLY.

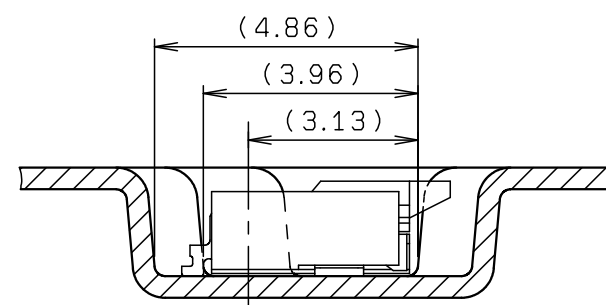
TOLERANCE / 一般公差(S)		PRODUCT SPEC / 製品規格									
X < 10	±0.2	UNIT		ANGLE		REFER TO SHEET		1/3			
10 ≤ X < 30	±0.25	mm		3RD		NO.		EDN/DCN		DATE	
30 ≤ X	±0.3	SCALE		DATE		PART NAME / 品名		ISSUE		CHECKED	
		NTS		2023/03/29		FPC ASSY RA SMT		APPROVED		APPROVED	
ANGLE / 角度		±3°				0.5mm PITCH ZIF TYPE BOTTOM CONTACT					
DRAWN	DESIGNED	CHECKED	APPROVED	PART NO. / 型番		PART NO. / 型番					
N. KITAGAWA	N. KITAGAWA		N. NAKAJIMA	04 6806 OXX 100 846 +		04 6806 OXX 100 846 +					
		DRAWN		DWG NO. / 図番		DWG NO. / 図番		SHEET/REV			
		KYOCERA		BJS 6806055		BJS 6806055		12/3		A	



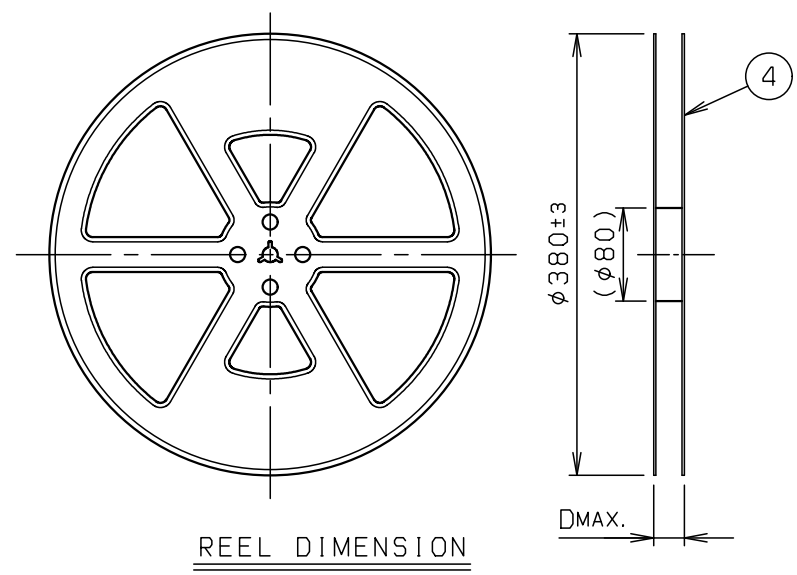
SECT. E-E
(8~20P)



SECT. E-E



SECT. F-F



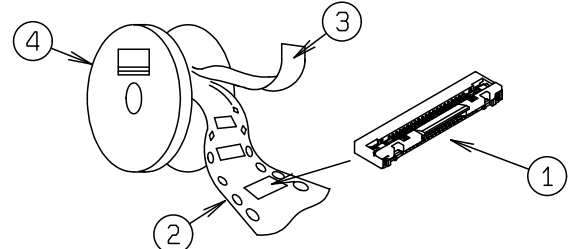
REEL DIMENSION

NO.	DESCRIPTION	PART NO.	QTY	MATERIAL	DRW NO.	REMARKS
1	CONNECTOR	04 6806 OXX 100 846 +	3000			00 6806 OXX 100 846 +
2	EMBOSSSED TAPE		1	POLYSTYRENE		
3	TOP COVER TAPE		1	POLYSTYRENE		
4	REEL		1	POLYSTYRENE		

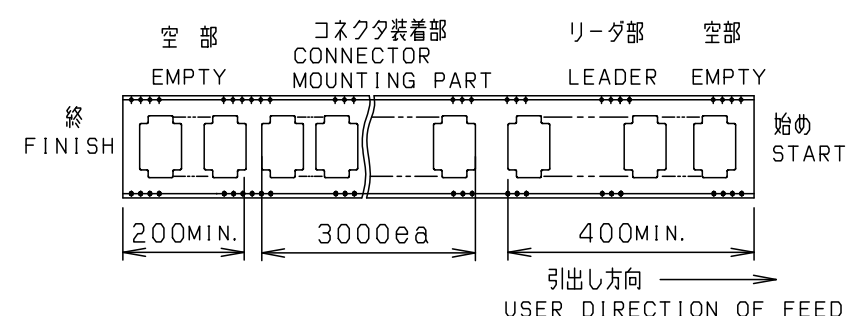
注記
NOTE

1. 梱包数量 : 3000 個/リール
PACKING QUANTITY : 3000 ea/reel

2. 納入時のリール巻き方向
REELING DIRECTION
IN DELIVERY



3. 引出し方向
USER DIRECTION OF FEED



4. 型番 P/N 04 6806 OXX 100 846 +

極数 NO. OF POS.

めっきコード PLATING CODE

846 + : AU SELECTIVE
(ANCHOR PLATE : SU-CU)

※この注記の1~3は3ページ目にはみ適用
※THESE NOTES 1 TO 3 ARE APPLICABLE TO SHEET-3 ONLY.

極数 NO. OF POS.	A	B	C	D
8	11.5	—	24.0	30.4
10	11.5	—	24.0	30.4
12	11.5	—	24.0	30.4
14	11.5	—	24.0	30.4
20	11.5	—	24.0	30.4
21	14.2	28.4	32.0	38.4
26	14.2	28.4	32.0	38.4
30	14.2	28.4	32.0	38.4
35	20.2	38.5	44.0	50.4
40	20.2	38.5	44.0	50.4
45	20.2	38.5	44.0	50.4
50	20.2	38.5	44.0	50.4
60	26.2	50.5	56.0	62.4
68	26.2	50.5	56.0	62.4
70	26.2	50.5	56.0	62.4
74	26.2	50.5	56.0	62.4
80	26.2	50.5	56.0	62.4

※この表は3ページ目にはみ適用
※THIS CHART IS APPLICABLE TO SHEET-3 ONLY.

TOLERANCE / 一般公差(S)		PRODUCT SPEC / 製品規格		REFER TO SHEET 1/3					
X < 10	±0.2	UNIT	ANGLE	NO.	EDN/DCN	DATE	ISSUE	CHECKED	APPROVED
10 ≤ X < 30	±0.25	mm	3RD	PART NAME / 品名					
30 ≤ X	±0.3	SCALE	DATE	SERIES 6806 EMBOSS TAPE ASSY RA SMT					
ANGLE / 角度	±3°	NTS	2023/03/29	0.5mm PITCH ZIF BOTTOM CONTACT TYPE					
DRAWN	DESIGNED	CHECKED	APPROVED	PART NO. / 型番					
N. KITAGAWA	N. KITAGAWA		N. NAKAJIMA	04 6806 OXX 100 846 +					
DWG NO. / 図番				SHEET/REV					
BJS 6806055				13/3 A					



ROHS規制対応
COMPLIANT WITH
ROHS REGULATIONS