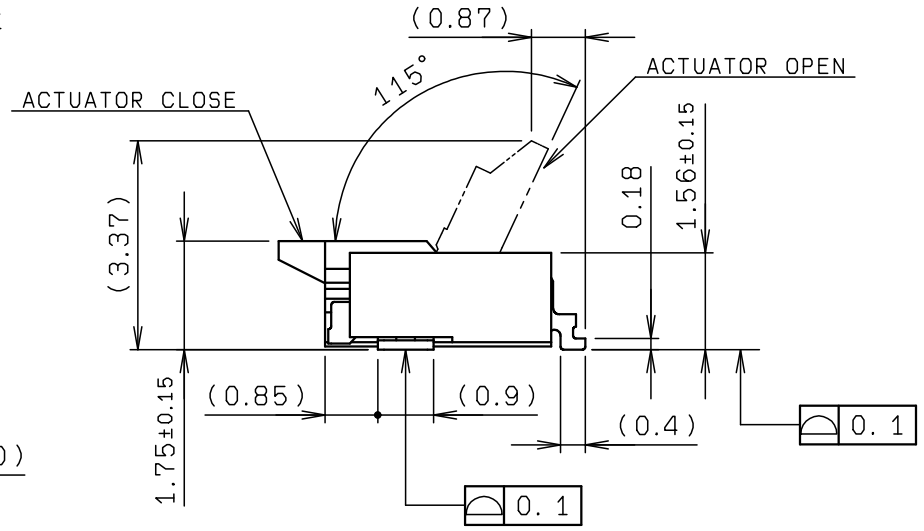
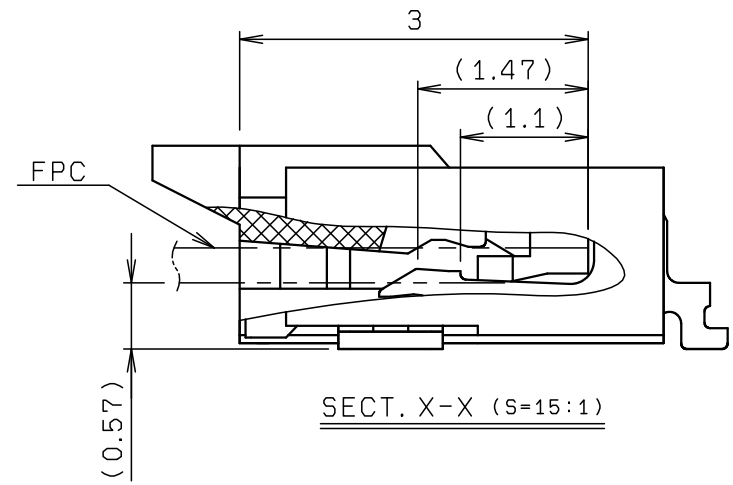
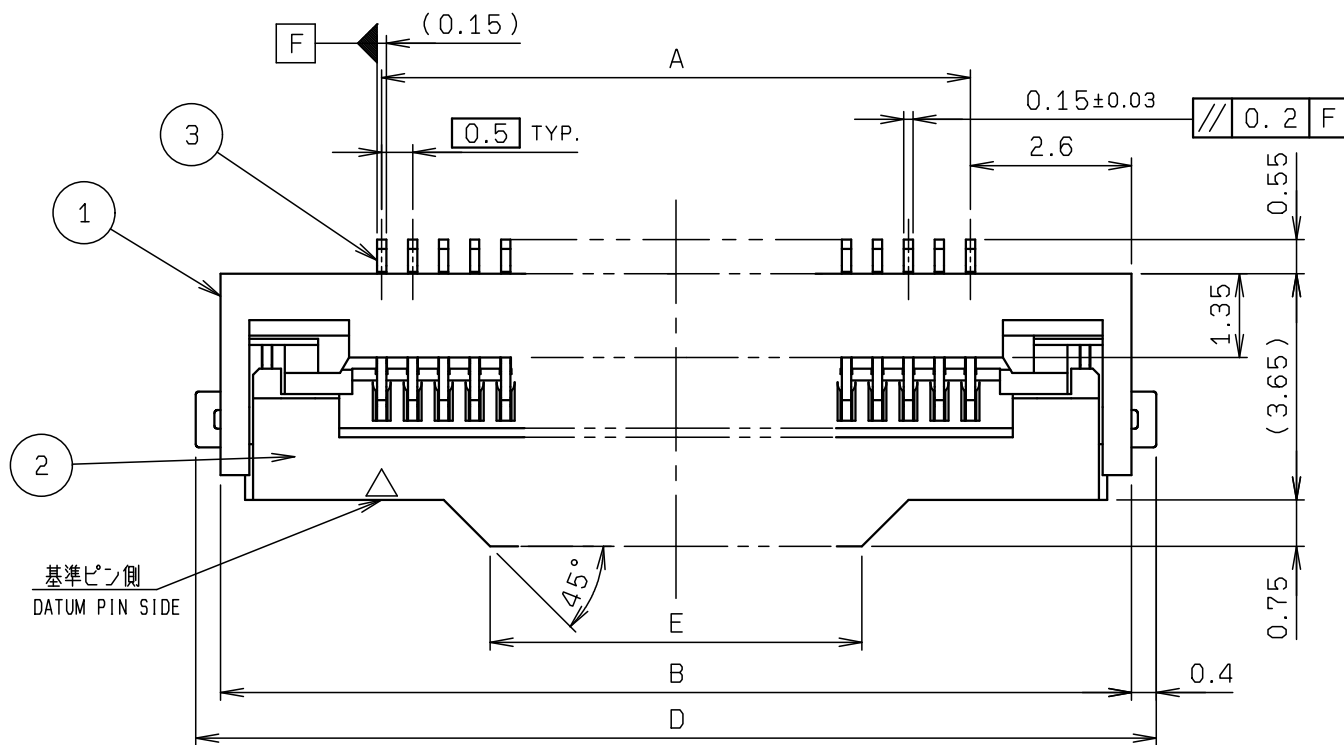
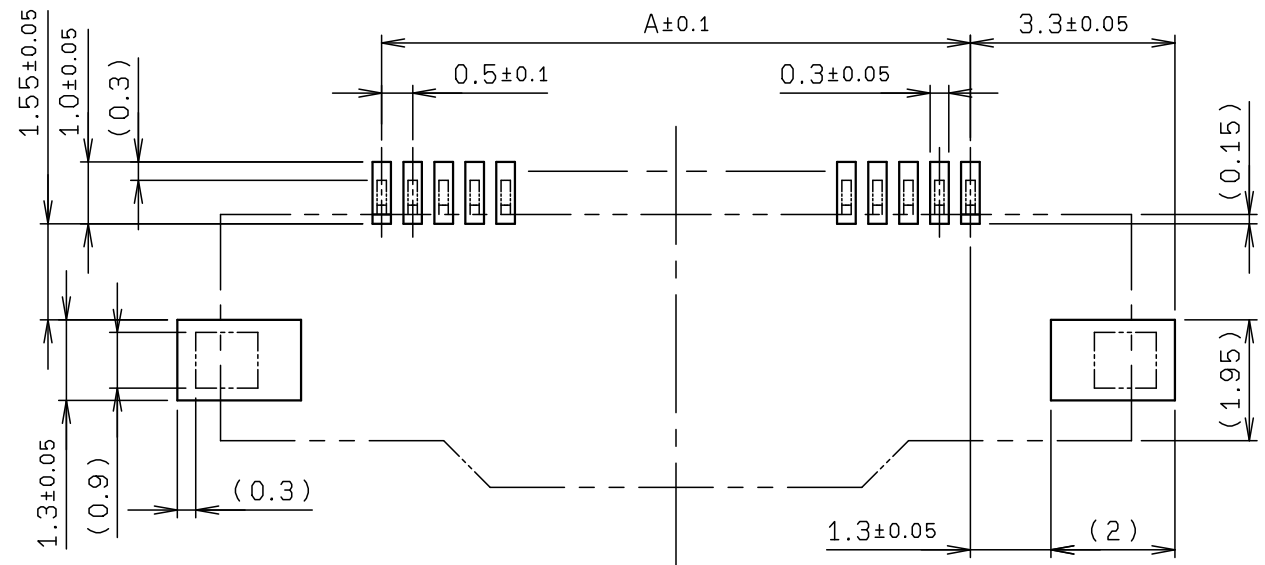
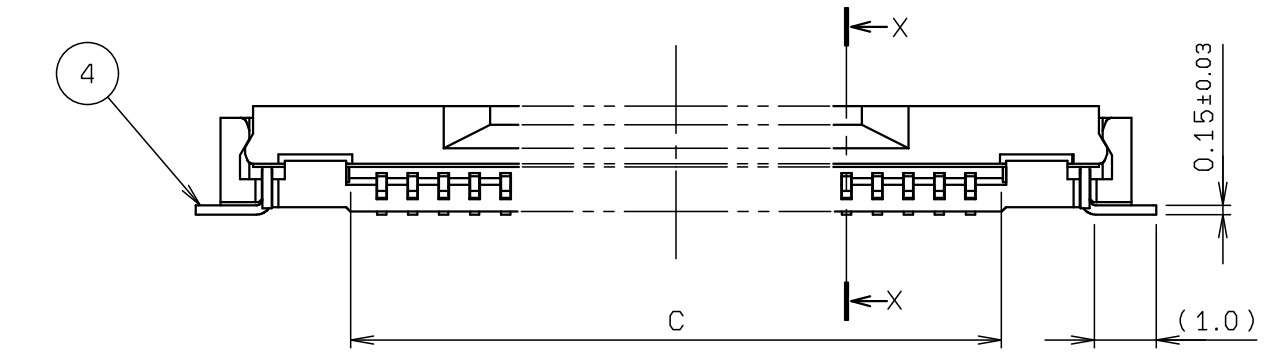


NO.	DESCRIPTION	PART NO.	QTY	MATERIAL	DRW NO.	REMARKS
1	INSULATOR		1	HEAT RESISTANCE PLASTIC		COLOR: WHITE UL94V-0
2	ACTUATOR		1	HEAT RESISTANCE PLASTIC		COLOR: BLACK UL94V-0
3	CONTACT		N	PHOS-BRONZE		t=0.15 AU PLATING
4	ANCHOR PLATE		2	PHOS-BRONZE		t=0.15 Sn-Cu PLATING



極数 NO. OF POS.	A	B	C	D	E
8	3.5	8.7	4.55	9.5	2.85
10	4.5	9.7	5.55	10.5	3.85
12	5.5	10.7	6.55	11.5	4.85
14	6.5	11.7	7.55	12.5	5.85
20	9.5	14.7	10.55	15.5	6.0
21	10.0	15.2	11.05	16.0	6.5
26	12.5	17.7	13.55	18.5	9.0
30	14.5	19.7	15.55	20.5	11.0
35	17.0	22.2	18.05	23.0	13.5
40	19.5	24.7	20.55	25.5	16.0
41	20.0	25.2	21.05	26.0	16.5
45	22.0	27.2	23.05	28.0	18.5
50	24.5	29.7	25.55	30.5	21.0
51	25.0	30.2	26.05	31.0	21.5
60	29.5	34.7	30.55	35.5	26.0
64	31.5	36.7	32.55	37.5	28.0
68	33.5	38.7	34.55	39.5	30.0
70	34.5	39.7	35.55	40.5	31.0
80	39.5	44.7	40.55	45.5	36.0

※この表は1, 2ページ目にのみ適用
 ※THIS CHART IS APPLICABLE TO SHEET-1 AND SHEET-2 ONLY.

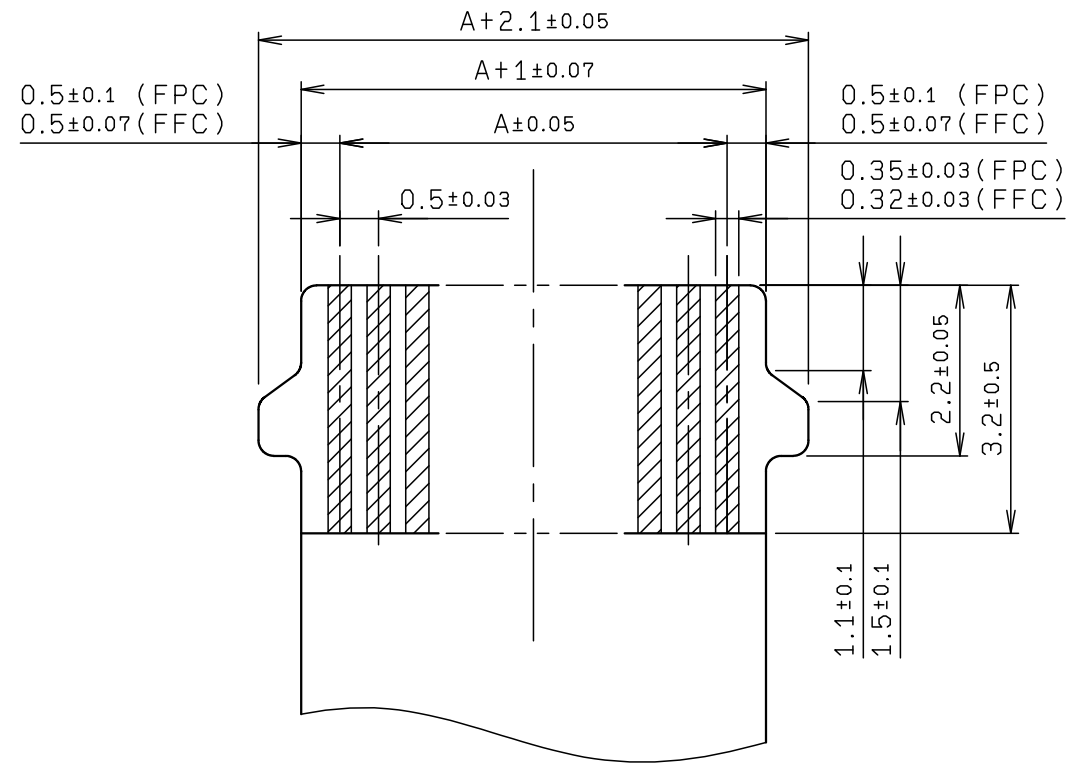
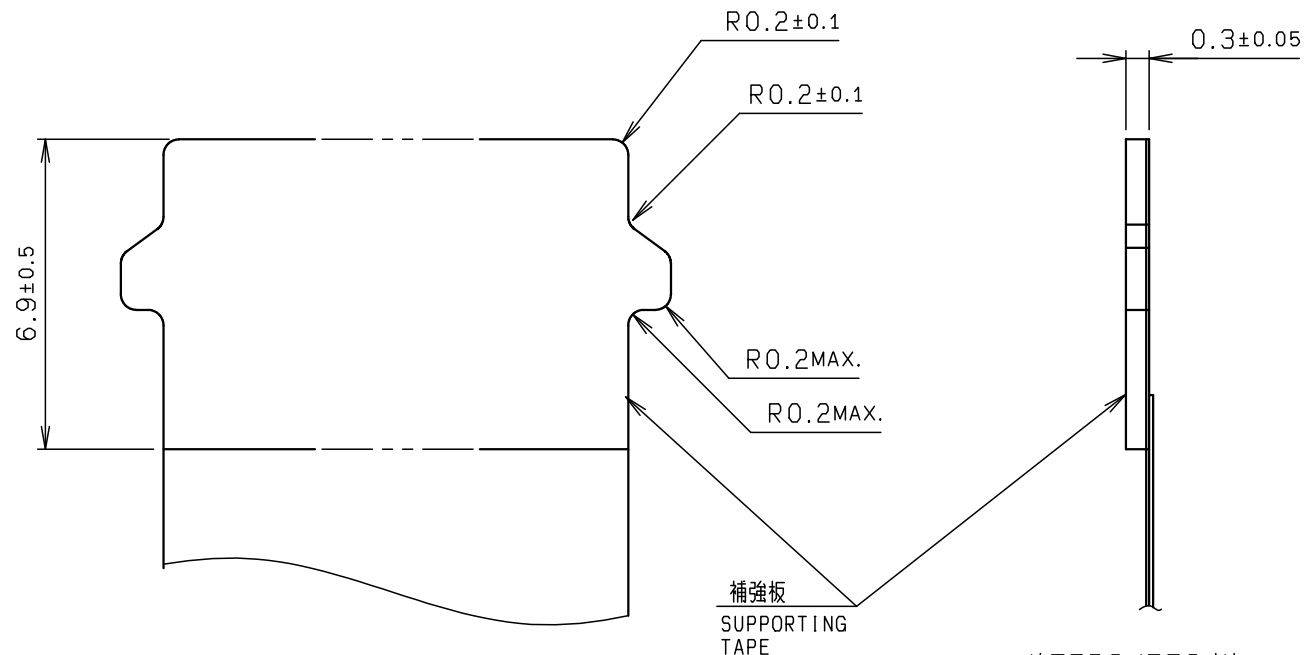


ROHS規制対応
 COMPLIANT WITH
 ROHS REGULATIONS

TOLERANCE / 一般公差(S)		PRODUCT SPEC / 製品規格		Q	DCN19082	2019/02/06		
X < 10	±0.2			P	DCN-967	2017/10/04	A. MURATA	N. KITAGAWA
10 ≤ X < 30	±0.25	UNIT	ANGLE	O	EDN-133	2013/03/07	T. MAKABE	Y. FUJII
30 ≤ X	±0.3	mm	3RD	NO.	EDN/DCN	DATE	ISSUE	CHECKED
ANGLE / 角度	±3°	SCALE	DATE	PART NAME / 品名				
		NTS	2013/03/07	FPC ASSY RA SMT				
DRAWN	DESIGNED	CHECKED	APPROVED	0.5mm PITCH ZIF TYPE BOTTOM CONTACT				
M. TAKAHASHI	T. MAKABE		Y. FUJII	PART NO. / 型番				
				04 6806 OXX 000 846 +				
				DWG NO. / 図番				
				BJS 6806006				
				SHEET/REV				
				1/3 Q				

NO.	DESCRIPTION	PART NO.	QTY	MATERIAL	DRW NO.	REMARKS
-----	-------------	----------	-----	----------	---------	---------

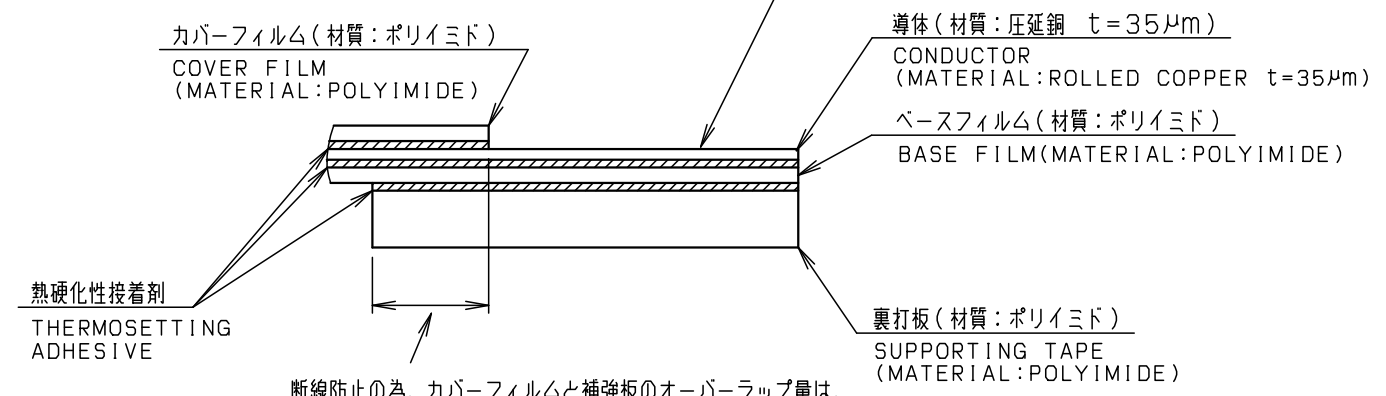
ROHS規制対応
COMPLIANT WITH
ROHS REGULATIONS



(推奨仕様)

FPC構成
FPC STRUCTURE

表面処理 PLATING	仕様 SPECIFICATION
金めっき AU PLATING	Ni UNDER COAT: 3±2µm AU: 0.06±0.03µm

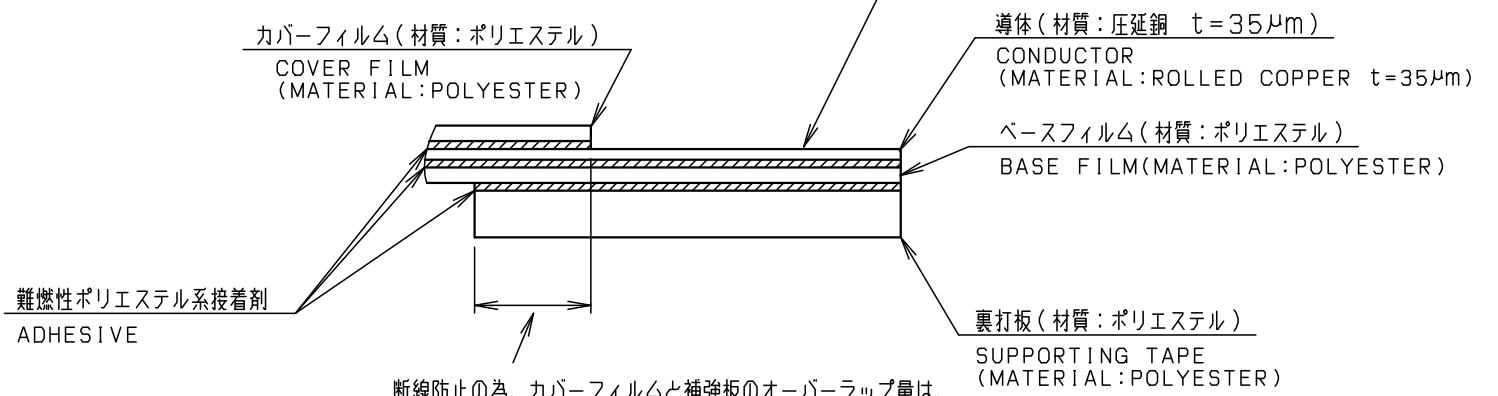


断線防止の為、カバーフィルムと補強板のオーバーラップ量は、1mm以上とする事を推奨します。
IN ORDER TO PREVENT OPEN CIRCUIT, 1mm OR MORE OF THE COVER FILM AND THE SUPPORTING PLATE SHALL BE OVERLAPPED.

(推奨仕様)

FFC構成
FFC STRUCTURE

表面処理 PLATING	仕様 SPECIFICATION
金めっき AU PLATING	Ni UNDER COAT: 0.5µmMIN. AU: 0.05µmMIN.



断線防止の為、カバーフィルムと補強板のオーバーラップ量は、1mm以上とする事を推奨します。
IN ORDER TO PREVENT OPEN CIRCUIT, 1mm OR MORE OF THE COVER FILM AND THE SUPPORTING PLATE SHALL BE OVERLAPPED.

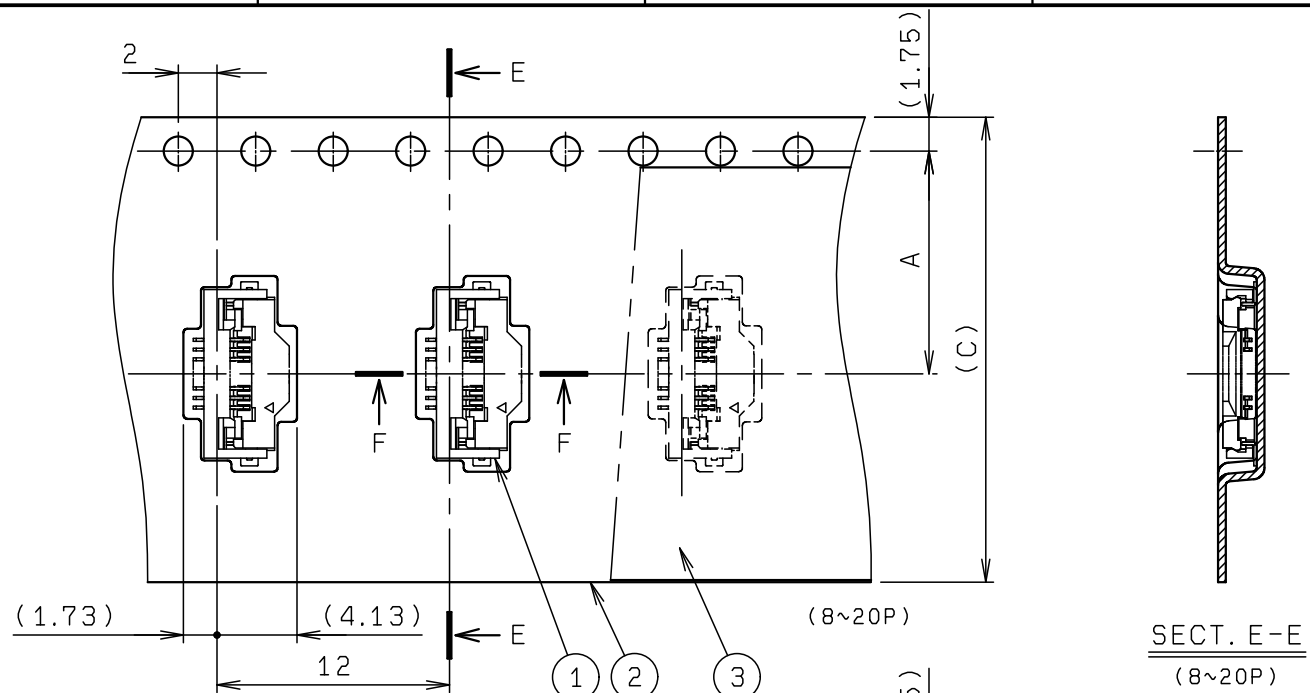
注記
NOTE

1. コンタクトテール及び固定金具は、基板より最大浮き0.1mmとする。
FLOATING FROM BOARD OF CONTACT TAIL AND ANCHOR PLATE SHALL BE 0.1mmMAX.
2. Nは、極数を示す。
N MEANS NUMBER OF PINS.

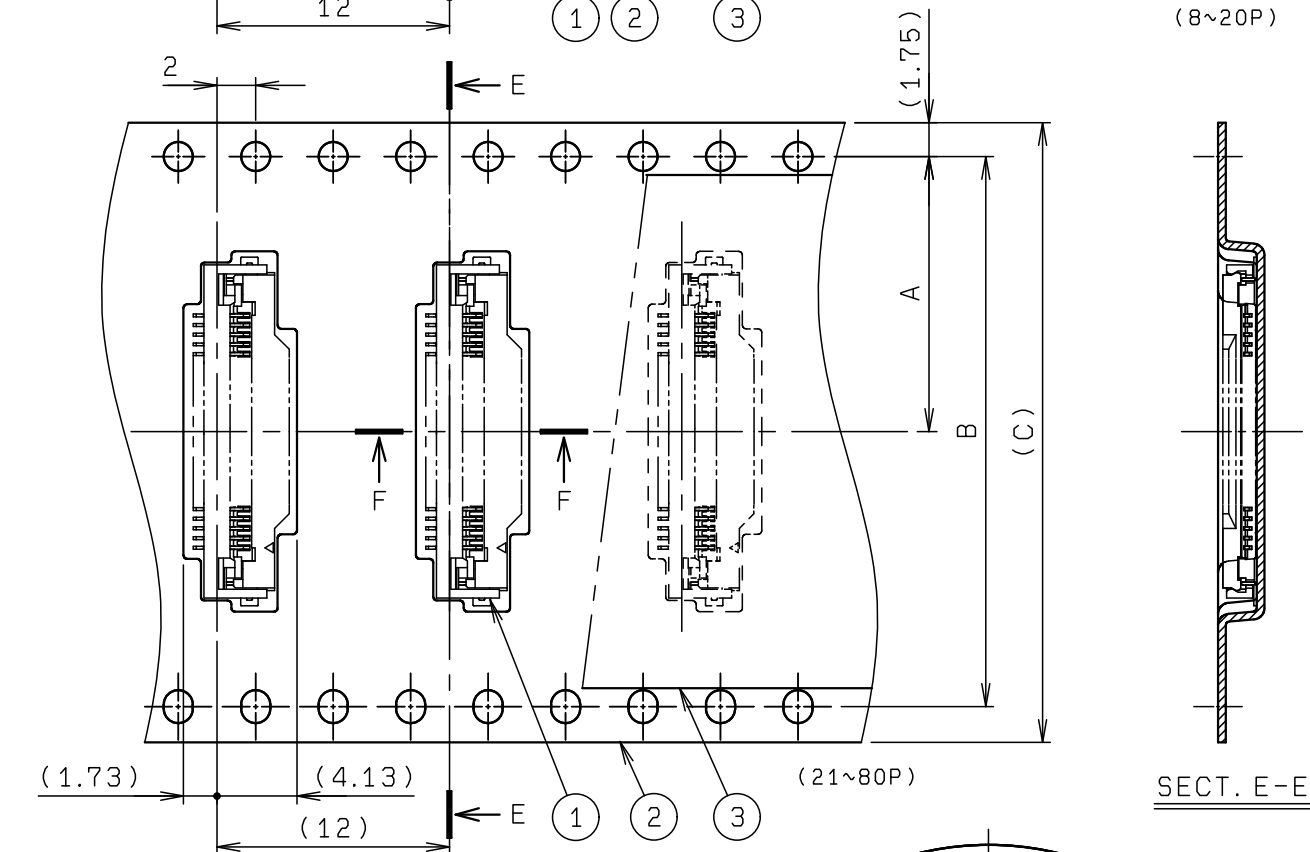
※この注記は1, 2ページ目におのみ適用
※THIS NOTES IS APPLICABLE TO SHEET-1 AND SHEET-2 ONLY.

TOLERANCE / 一般公差(S)		PRODUCT SPEC / 製品規格		REFER TO SHEET 1/3					
X < 10	±0.2	UNIT	ANGLE	NO.	EDN/DCN	DATE	ISSUE	CHECKED	APPROVED
10 ≤ X < 30	±0.25	mm	3RD	PART NAME / 品名					
30 ≤ X	±0.3	SCALE	DATE	FPC ASSY RA SMT					
ANGLE / 角度	±3°	NTS	2013/03/07	0.5mm PITCH ZIF TYPE BOTTOM CONTACT					
DRAWN	DESIGNED	CHECKED	APPROVED	PART NO. / 型番					
M. TAKAHASHI	T. MAKABE		Y. FUJII	04 6806 0XX 000 846 +					
KYOCERA				DWG NO. / 図番					SHEET/REV
				BJS 6806006					12/3 Q

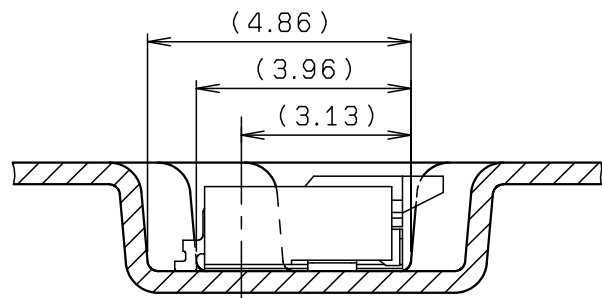
© 2019 KYOCERA Corporation



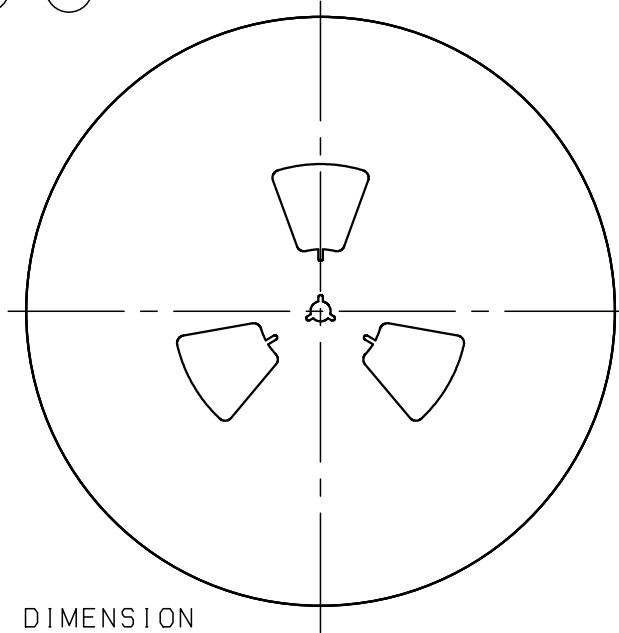
SECT. E-E
(8~20P)



SECT. E-E



SECT. F-F



REEL DIMENSION

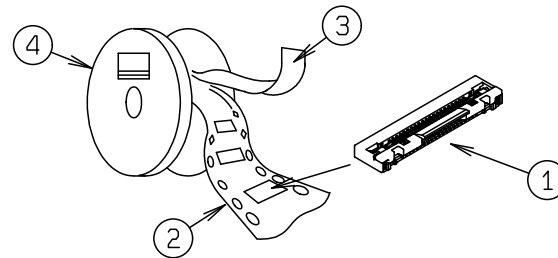
ROHS規制対応
COMPLIANT WITH
ROHS REGULATIONS

NO.	DESCRIPTION	PART NO.	QTY	MATERIAL	DRW NO.	REMARKS
1	CONNECTOR	04 6806 OXX 000 846 +	3000			00 6806 OXX 000 846 +
2	EMBOSSSED TAPE		1	POLYSTYRENE		
3	TOP COVER TAPE		1	POLYSTYRENE		
4	REEL		1	POLYSTYRENE		

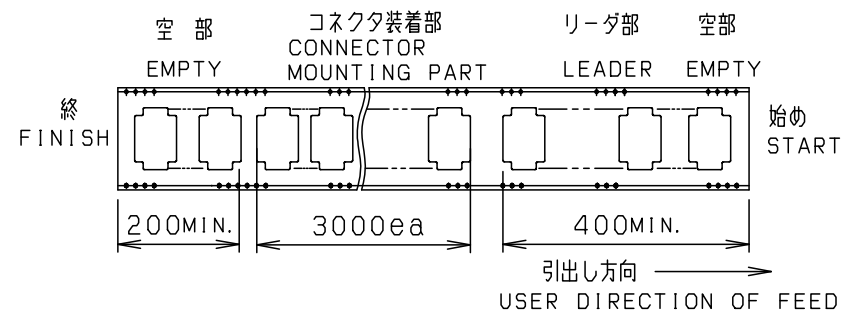
注記
NOTE

1. 梱包数量 : 3000 個/リール
PACKING QUANTITY : 3000 ea/reel

2. 納入時のリール巻き方向
REELING DIRECTION
IN DELIVERY



3. 引出し方向
USER DIRECTION OF FEED



4. 型番 P/N 04 6806 OXX 000 846 +

極数 NO. OF POS.

めっきコード PLATING CODE

846 + : AU SELECTIVE
(ANCHOR PLATE : SU-CU)

※この注記の1~3は3ページ目にはみ適用

※THIS NOTES 1 TO 3 ARE APPLICABLE TO SHEET-3 ONLY.

極数 NO. OF POS.	A	B	C	D
8	11.5	—	24.0	30.4
10	11.5	—	24.0	30.4
12	11.5	—	24.0	30.4
14	11.5	—	24.0	30.4
20	11.5	—	24.0	30.4
21	14.2	28.4	32.0	38.4
26	14.2	28.4	32.0	38.4
30	14.2	28.4	32.0	38.4
35	20.2	38.5	44.0	50.4
40	20.2	38.5	44.0	50.4
41	20.2	38.5	44.0	50.4
45	20.2	38.5	44.0	50.4
50	20.2	38.5	44.0	50.4
51	20.2	38.5	44.0	50.4
60	26.2	50.5	56.0	62.4
64	26.2	50.5	56.0	62.4
68	26.2	50.5	56.0	62.4
70	26.2	50.5	56.0	62.4
80	26.2	50.5	56.0	62.4

※この表は3ページ目にはみ適用

※THIS CHART IS APPLICABLE TO SHEET-3 ONLY.

TOLERANCE / 一般公差(S)		PRODUCT SPEC / 製品規格		REFER TO SHEET 1/3		
X < 10	±0.2	UNIT	ANGLE	NO.	EDN/DCN	DATE
10 ≤ X < 30	±0.25	mm	3RD	ISSUE	CHECKED	APPROVED
30 ≤ X	±0.3	SCALE	DATE	PART NAME / 品名		
ANGLE / 角度	±3°	NTS	2013/03/07	SERIES 6806 EMBOSS TAPE ASSY RA SMT 0.5mm PITCH ZIF BOTTOM CONTACT TYPE		
DRAWN	DESIGNED	CHECKED	APPROVED	PART NO. / 型番		
M. TAKAHASHI	T. MAKABE		Y. FUJII	04 6806 OXX 000 846 +		
DWG NO. / 図番				SHEET / REV		
BJS 6806006				13 / 3		Q

