

推奨基板取付寸法(コネクタ搭載側)
MOUNTING LAYOUT (CONN. MOUNTING SIDE)

NO.	DESCRIPTION	PART NO.	QTY	MATERIAL	DRW NO.	REMARKS
1	ACTUATOR		1	PPS		COLOR :BLACK
2	INSULATOR		1	LCP		COLOR :WHITE
3	CONTACT		n	PHOS-BRONZE		t=0.2
4	ANCHOR PLATE		2	BRASS		t=0.4

種数 NO. OF POS.	A	B	C
8	16.1	3.5	12.22
10	17.1	4.5	13.22
12	18.1	5.5	14.22
14	19.1	6.5	15.22
16	20.1	7.5	16.22
18	21.1	8.5	17.22
20	22.1	9.5	18.22
22	23.1	10.5	19.22
24	24.1	11.5	20.22
26	25.1	12.5	21.22
28	26.1	13.5	22.22
30	27.1	14.5	23.22
40	32.1	19.5	28.22
50	37.1	24.5	33.22

※この表は1, 2ページ目のみ適用
※THIS CHART IS APPLICABLE TO SHEET-1 AND SHEET-2 ONLY.

ROHS規制対応
COMPLIANT WITH
ROHS REGULATIONS

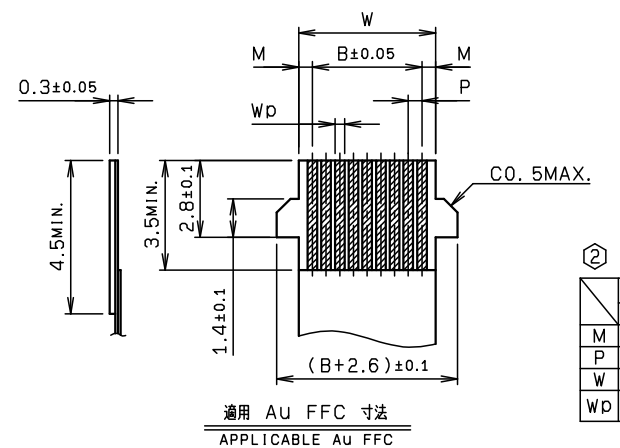
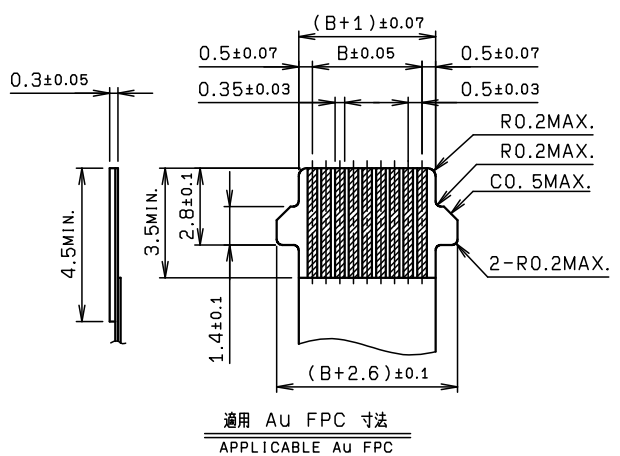
TOLERANCE / 一般公差(S)		PRODUCT SPEC / 製品規格		A DCN-1232		11-05-14			
10 ≤ X < 30	±0.2	UNIT	ANGLE	0	EDN-667	12-21-10	Y. FUJII		T. SATOH
30 ≤ X	±0.3	mm	3RD	NO.	EDN/DCN	DATE	ISSUE	CHECKED	APPROVED
ANGLE / 角度	±3°	SCALE	DATE	PART NAME / 品名					
		NTS	12-21-10	SERIES 6801 FPC/FFC ASSY ST SMT					
DRAWN	DESIGNED	CHECKED	APPROVED	0.5mm PITCH ZIF CONNECTOR					
Y. FUJII	Y. FUJII		T. SATOH	PART NO. / 製番					
				04 6801 6XX 111 846 +					
				DWG NO. / 図番					
				BJS 6801004					
				SHEET/REV					
				1/3 A					

NO.	DESCRIPTION	PART NO.	QTY	MATERIAL	DRW NO.	REMARKS
-----	-------------	----------	-----	----------	---------	---------

注 記
NOTE

- ① コンタクトテール及び固定金具は基板より最大浮き0.1mmとする。
CONTACT TAIL AND ANCHOR PLATE HEIGHT SHALL BE 0.1mm MAX.
- ② 適用FPC, FFC寸法は1か2を選択のこと。
SELECT AN APPLICABLE FPC, FFC FROM 1 OR 2.

※この注記は1, 2ページ目にも適用
*THIS NOTES IS APPLICABLE TO SHEET-1 AND SHEET-2 ONLY.

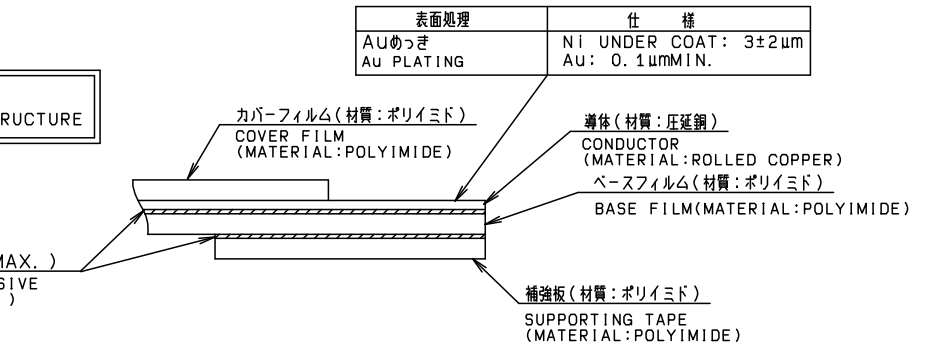


	FFC	
	1	2
M	0.5 ± 0.08	0.5 ± 0.07
P	0.5 ± 0.05	0.5 ± 0.03
W	(B+1) ± 0.07	(B+1) ± 0.07
WD	0.32 ± 0.03	0.30 ± 0.03

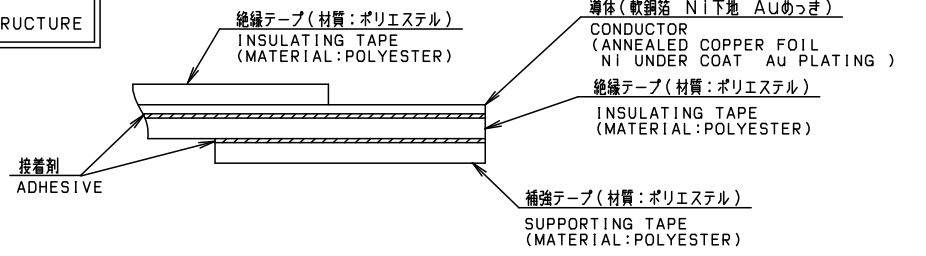
ROHS規制対応
COMPLIANT WITH
ROHS REGULATIONS

FPC構成
FPC STRUCTURE
(推奨仕様)

熱硬化性接着剤 (厚さ: 40 μmMAX.)
THERMOSETTING ADHESIVE
(THICKNESS: 40 μmMAX.)

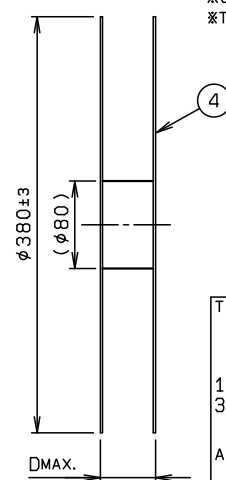
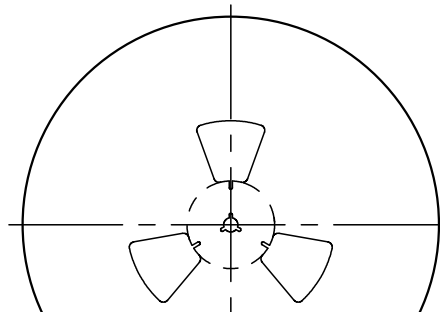
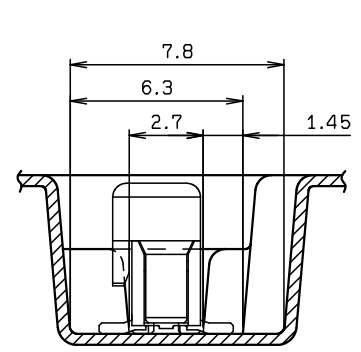
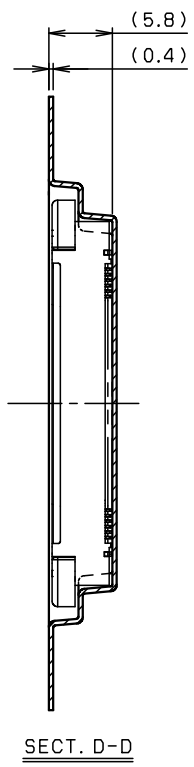
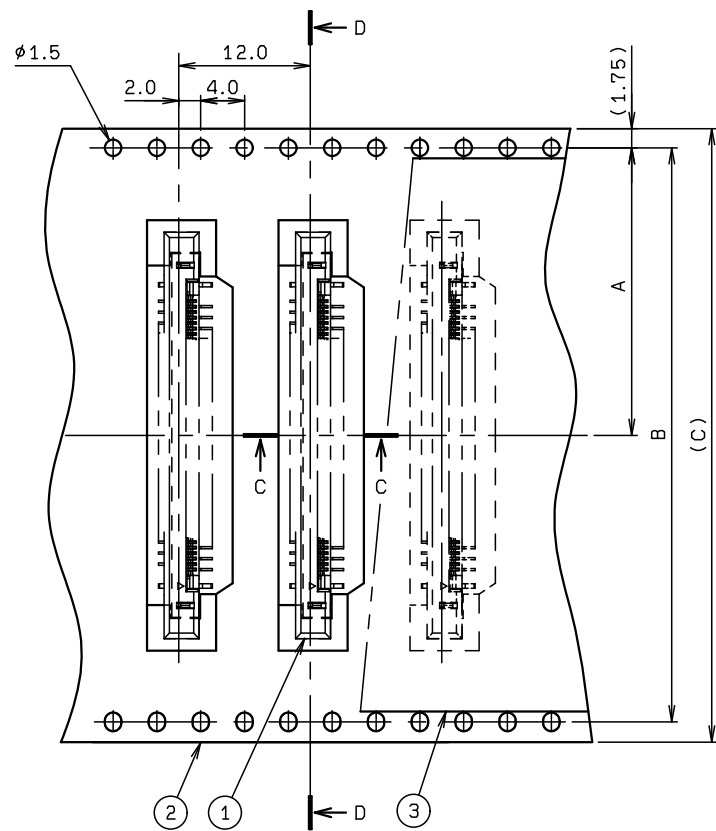


FFC構成
FFC STRUCTURE
(推奨仕様)



TOLERANCE / 一般公差 (S)		PRODUCT SPEC / 製品規格							
X < 10	± 0.2	UNIT	ANGLE	REFER TO SHEET		1/3			
10 ≤ X < 30	± 0.25	mm	3RD	NO.	EDN/DCN	DATE	ISSUE	CHECKED	APPROVED
30 ≤ X	± 0.3	SCALE	DATE	PART NAME / 品名					
ANGLE / 角度	± 3°	NTS	12-21-10	SERIES 6801 FPC/FFC ASSY ST SMT					
DRAWN	DESIGNED	CHECKED	APPROVED	0.5mm PITCH ZIF CONNECTOR					
Y. FUJII	Y. FUJII		T. SATOH	PART NO. / 製番					
				04 6801 6XX 111 846 +					
				DWG NO. / 図番					
				BJS 6801004					
				SHEET/REV					
				2/3 A					

KYOCERA KYOCERA Corporation

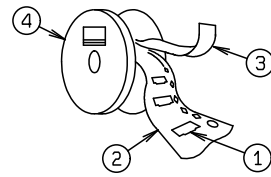


NO.	DESCRIPTION	PART NO.	QTY	MATERIAL	DRW NO.	REMARKS
1	CONNECTOR	04 6801 6XX 111 846 +	1000			00 6801 6XX 111 846 +
2	EMBOSSED TAPE		1	POLYSTYRENE (CLEAR)		
3	TOP COVER TAPE		1	POLYSTYRENE (CLEAR)		
4	REEL		1	POLYSTYRENE		

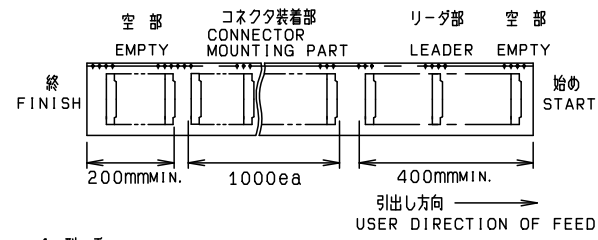
注記
NOTE

1. 梱包数量 : 1000 個/リール
PACKING QUANTITY : 1000 ea/reel

2. 納入時のリール巻き方向
REELING DIRECTION
IN DELIVERY



3. 引出し方向
USER DIRECTION OF FEED



4. 型番
P/N 04 6801 6XX 111 846 +
種数
NO. OF POS.

※この注記の1~3は3ページ目のみ適用
※THIS NOTES 1 TO 3 ARE APPLICABLE TO SHEET-3 ONLY.

種数 NO. OF POS.	A	B	C	D
8	14.2	28.4	32.0	38.4
10	14.2	28.4	32.0	38.4
12	14.2	28.4	23.0	38.4
14	14.2	28.4	32.0	38.4
16	20.2	40.4	44.0	50.4
18	20.2	40.4	44.0	50.4
20	20.2	40.4	44.0	50.4
22	20.2	40.4	44.0	50.4
24	20.2	40.4	44.0	50.4
26	20.2	40.4	44.0	50.4
28	20.2	40.4	44.0	50.4
30	20.2	40.4	44.0	50.4
40	26.2	52.4	56.0	62.4
50	26.2	52.4	56.0	62.4

*生産対応可能種数については、営業部に
ご確認ください。
PLEASE ASK SALES DEPARTMENT
WHAT NUMBER OF CONTACT CAN
BE PRODUCED.

※この表は3ページ目のみ適用
※THIS CHART IS APPLICABLE TO
SHEET-3 ONLY.

ROHS規制対応
COMPLIANT WITH
ROHS REGULATIONS

TOLERANCE / 一般公差 (S)		PRODUCT SPEC / 製品規格		REFER TO SHEET		NO.		DATE		ISSUE		CHECKED		APPROVED	
X < 10	±0.2	UNIT	ANGLE	1/3		NO.		DATE		ISSUE		CHECKED		APPROVED	
10 ≤ X < 30	±0.25	mm	3RD			NO.		DATE		ISSUE		CHECKED		APPROVED	
30 ≤ X	±0.3	SCALE	DATE			NO.		DATE		ISSUE		CHECKED		APPROVED	
ANGLE / 角度	±3°	2:1	12-21-10			NO.		DATE		ISSUE		CHECKED		APPROVED	
DRAWN	DESIGNED	CHECKED	APPROVED	PART NAME / 品名		PART NO. / 型番		DATE		ISSUE		CHECKED		APPROVED	
Y. FUJII	Y. FUJII		T. SATOH	SERIES 6801 EMBOSS TAPE ASSY FPC ASSY ST SMT		04 6801 6XX 111 846 +		12-21-10		1/3					
KYOCERA Corporation		DWG NO. / 図番		SHEET/REV		BJS 6801004		3/3		A					