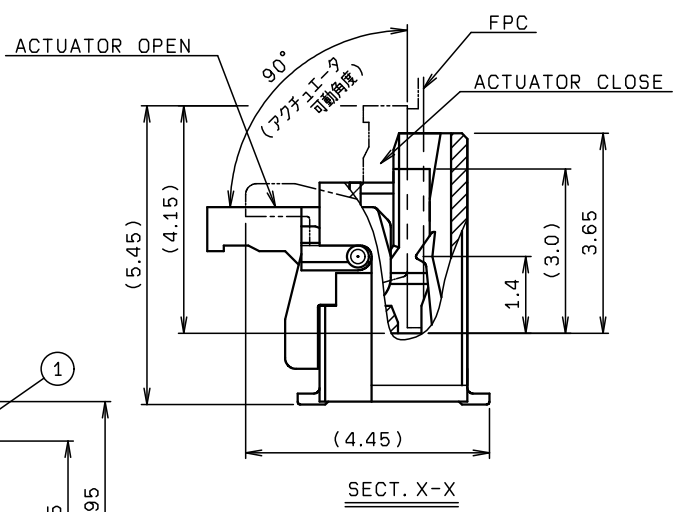
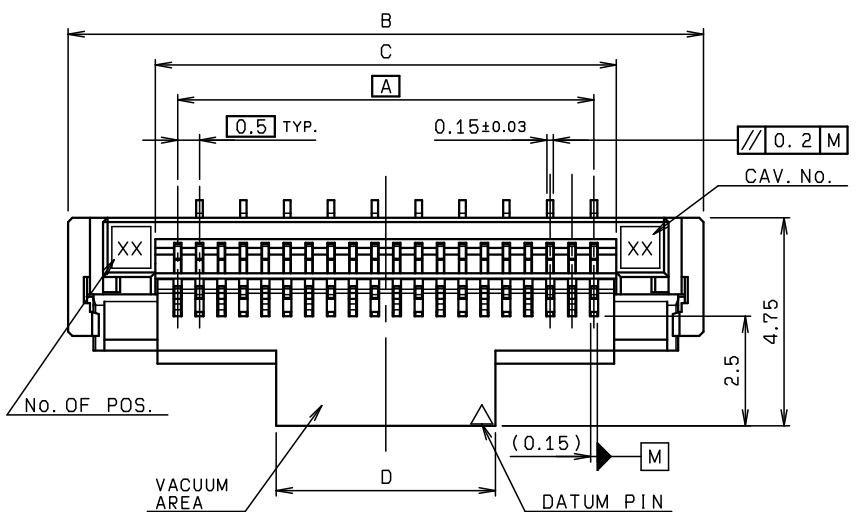
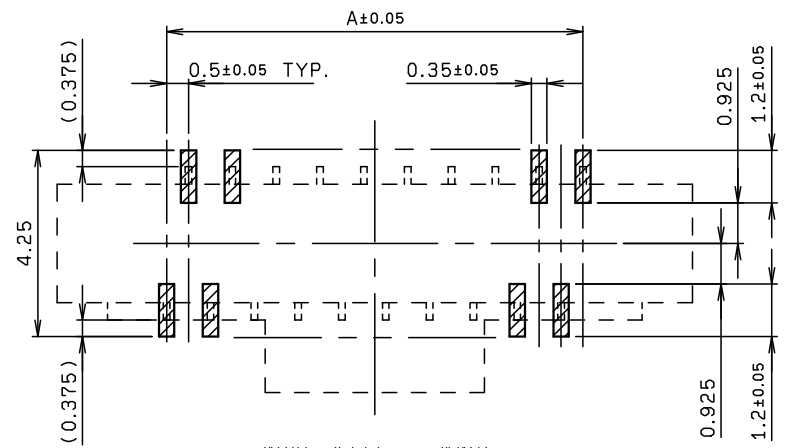
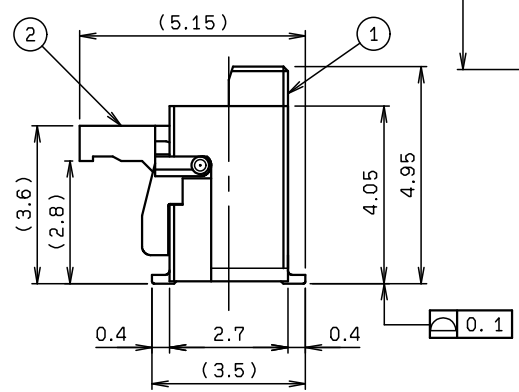
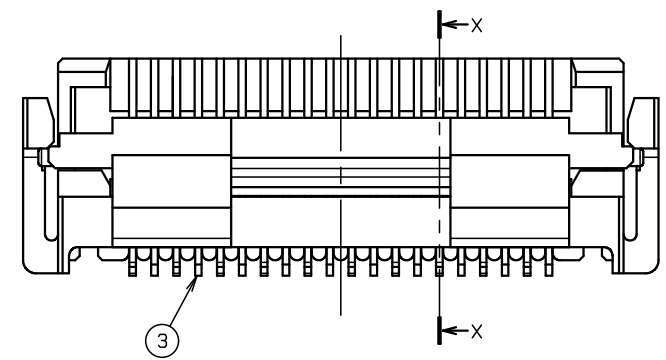


NO.	DESCRIPTION	PART NO.	QTY	MATERIAL	DRW NO.	REMARKS
1	INSULATOR		1	HEAT RESISTANT PLASTIC		COLOR :WHITE
2	ACTUATOR		1	HEAT RESISTANT PLASTIC		COLOR :BLACK
3	CONTACT		N	PHOS-BRONZE		t=0.15 FINISH :AU PLATING



種数 NO. OF POS.	A	B	C	D
10	4.5	9.5	5.6	3.0
16	7.5	12.5	8.6	4.0
30	14.5	19.5	15.6	7.0
33	16.0	21.0	17.1	8.5
36	17.5	22.5	18.6	10.0
40	19.5	24.5	20.6	8.0
45	22.0	27.0	23.1	10.5
50	24.5	29.5	25.6	13.0
60	29.5	34.5	30.6	18.0
64	31.5	36.5	32.6	20.0

※この表は1, 2ページ目のみ適用
 ※THIS CHART IS APPLICABLE TO SHEET-1 AND SHEET-2 ONLY.



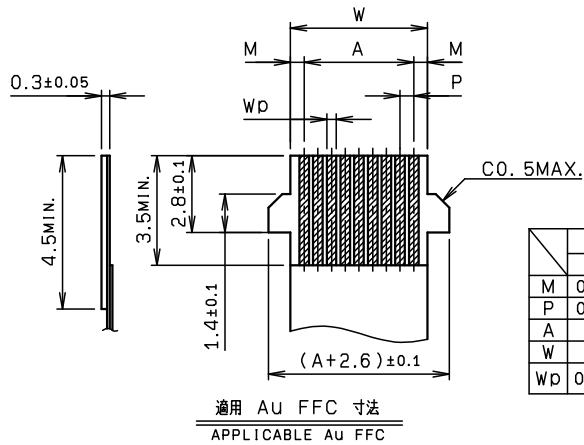
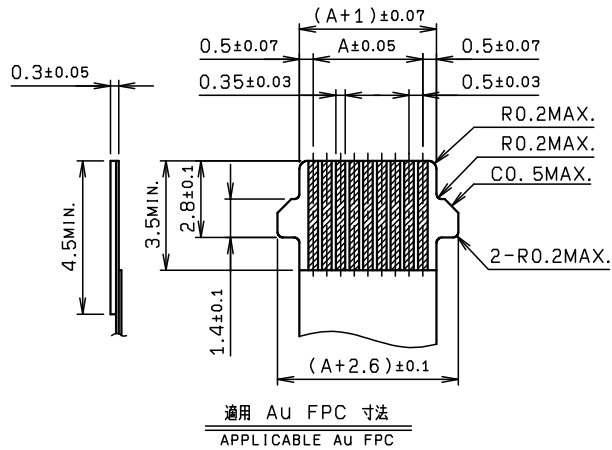
推奨基板取付寸法(コネクタ搭載側)
 MOUNTING LAYOUT(CONN. MOUNTING SIDE)

ROHS規制対応
 COMPLIANT WITH
 ROHS REGULATIONS

TOLERANCE / 一般公差(S)		PRODUCT SPEC / 製品規格		D	DCN-951	10-26-16			
X < 10	±0.2			C	DCN-649	5-08-13	M. SEKI		Y. FUJII
10 ≤ X < 30	±0.25	UNIT	ANGLE	O	EDN-325	7-05-10	T. MAKABE		T. SATOH
30 ≤ X	±0.3	mm	3RD	NO.	EDN/DCN	DATE	ISSUE	CHECKED	APPROVED
ANGLE / 角度 ±3°		SCALE	DATE	PART NAME / 品名					
		NTS	7-05-10	FPC ASSY ST SMT					
				0.5mm PITCH ZIF CONNECTOR					
DRAWN	DESIGNED	CHECKED	APPROVED	PART NO. / 製番					
T. MAKABE	T. MAKABE		T. SATOH	04 6251 0XX 010 846 +					
DWG NO. / 図番				SHEET/REV					
KYOCERA KYOCERA Corporation				BJS 6251002					
				1/3 D					

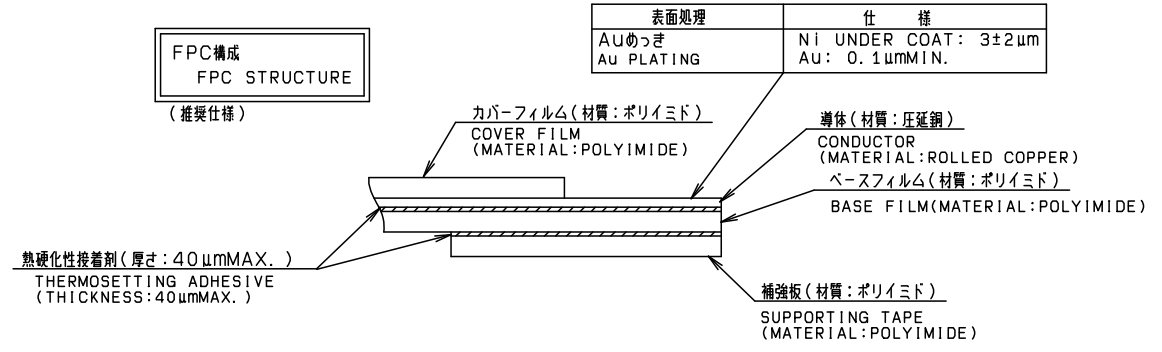
注 記
NOTE

1. コンタクトテール及び固定金具は基板より最大浮き0.1とする。
CONTACT TAIL AND ANCHOR PLATE HEIGHT SHALL BE 0.1MAX.
 2. 適用FPC/FFC寸法は1か2を選択のこと。
SELECT AN APPLICABLE FPC/FFC FROM 1 OR 2.
 3. Nは種数を示す。
N: NUMBER OF CONTACTS
- ※この注記は1, 2ページ目区のみ適用
※THIS NOTES IS APPLICABLE TO SHEET-1 AND SHEET-2 ONLY.

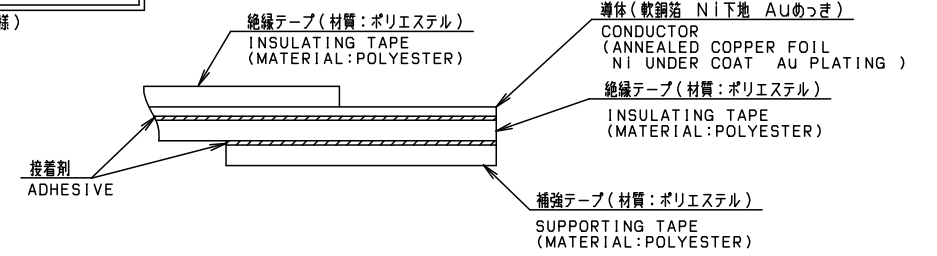


	FFC	
	1	2
M	0.5±0.08	0.5±0.07
P	0.5±0.05	0.5±0.03
A	A±0.05	A±0.05
W	W±0.07	W±0.07
WP	0.32±0.03	0.30±0.03

FPC構成
FPC STRUCTURE
(推奨仕様)

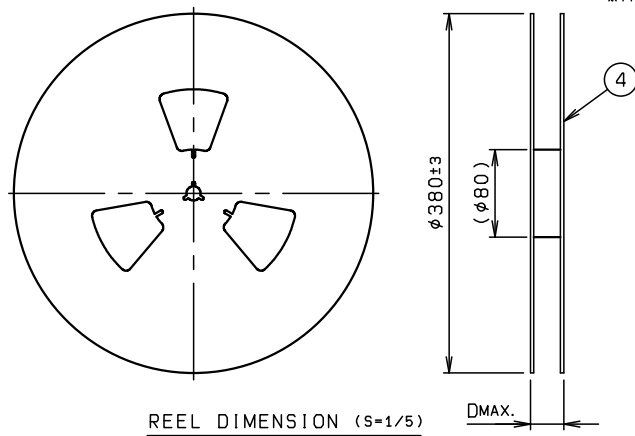
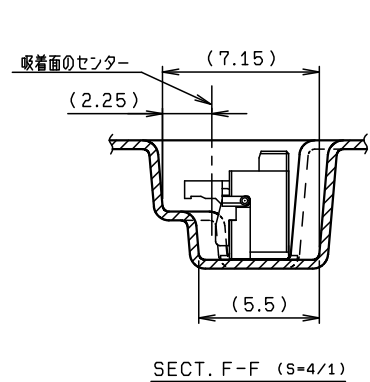
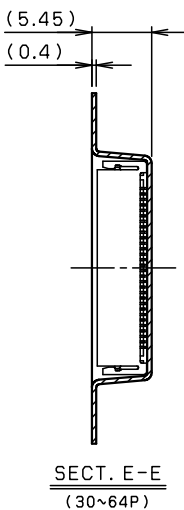
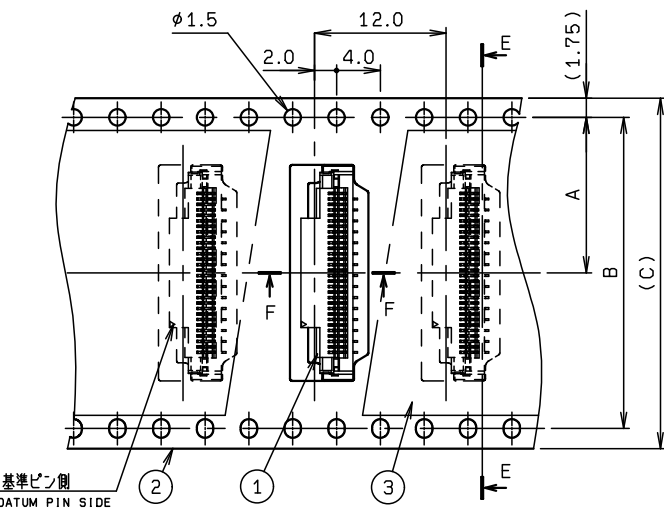
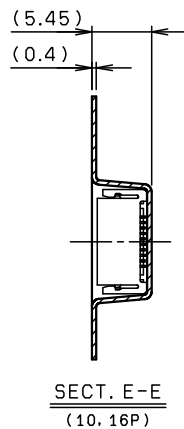
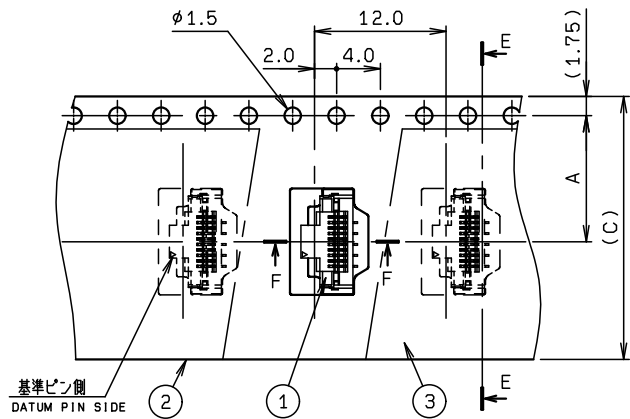


FFC構成
FFC STRUCTURE
(推奨仕様)



ROHS規制対応
COMPLIANT WITH
ROHS REGULATIONS

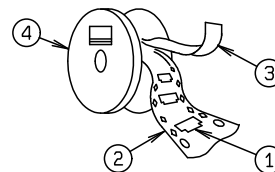
TOLERANCE / 一般公差 (S)		PRODUCT SPEC / 製品規格							
X < 10	±0.2	UNIT	ANGLE	REFER TO SHEET		1/3			
10 ≤ X < 30	±0.25	mm	3RD	NO.	EDN/DCN	DATE	ISSUE	CHECKED	APPROVED
30 ≤ X	±0.3	SCALE	DATE	PART NAME / 品名					
ANGLE / 角度	±3°	NTS	7-05-10	FPC ASSY ST SMT 0.5mm PITCH ZIF CONNECTOR					
DRAWN	DESIGNED	CHECKED	APPROVED	PART NO. / 製番					
T. MAKABE	T. MAKABE		T. SATOH	04 6251 0XX 010 846 +					
KYOCERA Corporation				DWG NO. / 図番		SHEET/REV			
				BJS 6251002		2/3		D	



NO.	DESCRIPTION	PART NO.	QTY	MATERIAL	DRW NO.	REMARKS
1	CONNECTOR	04 6251 0XX 010 846 +	1000	---		00 6251 0XX 010 846 +
2	EMBOSSED TAPE		1	POLYSTYRENE		
3	TOP COVER TAPE		1	POLYSTYRENE		
4	REEL		1	POLYSTYRENE		

注記
NOTE

- 梱包数量 : 1000 個/リール
PACKING QUANTITY : 1000 ea/reel
- 納入時のリール巻き方向
REELING DIRECTION
IN DELIVERY

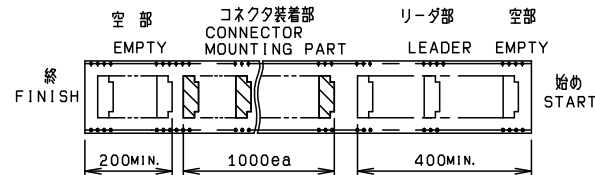


極数 NO. OF POS.	A	B	C	D
10	11.5	---	24.0	30.4
16	11.5	---	24.0	30.4
30	14.2	28.4	32.0	38.4
33	14.2	28.4	32.0	38.4
36	20.2	40.4	44.0	50.4
40	20.2	40.4	44.0	50.4
45	20.2	40.4	44.0	50.4
50	20.2	40.4	44.0	50.4
60	26.2	52.4	56.0	62.4
64	26.2	52.4	56.0	62.4

※この表は3ページ目のみ適用
*THIS CHART IS APPLICABLE TO
SHEET-3 ONLY.

3. 引出し方向

USER DIRECTION OF FEED



引出し方向
USER DIRECTION OF FEED

4. 型番
P/N

04 6251 0XX 010 846 +

極数

NO. OF POS.

めっきコード

PLATING CODE

846 + : Au 0.1μMIN.

※この注記の1~3は3ページ目のみ適用

*THIS NOTES 1 TO 3 ARE APPLICABLE TO SHEET-3 ONLY.

ROHS規制対応
COMPLIANT WITH
ROHS REGULATIONS

TOLERANCE / 一般公差 (S)		PRODUCT SPEC / 製品規格							
X < 10	±0.2	POLYSTYRENE (CLEAR)		REFER TO SHEET		1/3			
10 ≤ X < 30	±0.25	UNIT	ANGLE						
30 ≤ X	±0.3	mm	3RD						
ANGLE / 角度 ±3°		SCALE	DATE	NO. EDN/DCN		DATE		ISSUE CHECKED APPROVED	
		2:1	7-05-10	PART NAME / 品名		EMBOSS TAPE ASSY		FPC ASSY ST SMT 0.5mm PITCH	
DRAWN	DESIGNED	CHECKED	APPROVED	PART NO. / 型番		04 6251 0XX 010 846 +			
T. MAKABE	T. MAKABE		T. SATOH	DWG NO. / 図番		BJS 6251002		SHEET/REV 3/3 D	
KYOCERA		KYOCERA Corporation							