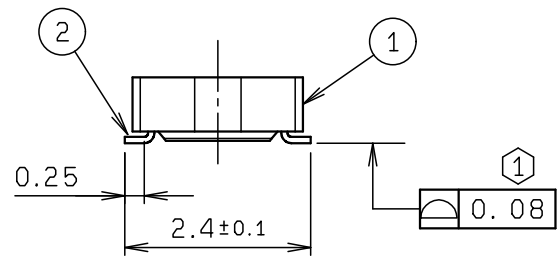
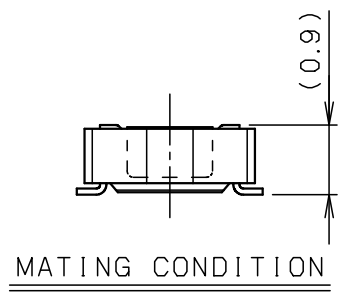
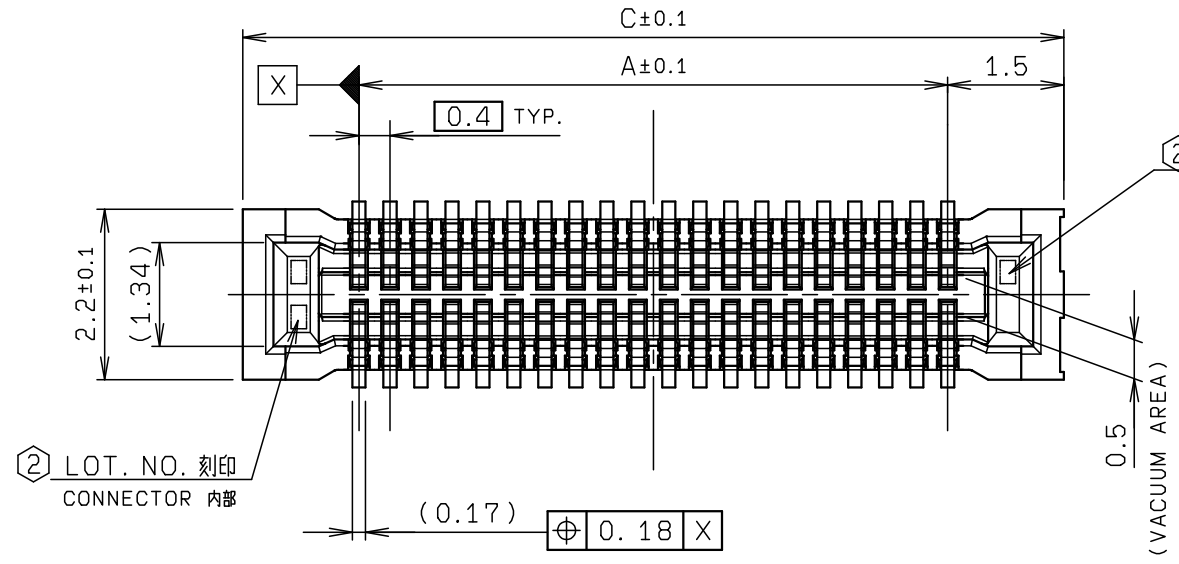
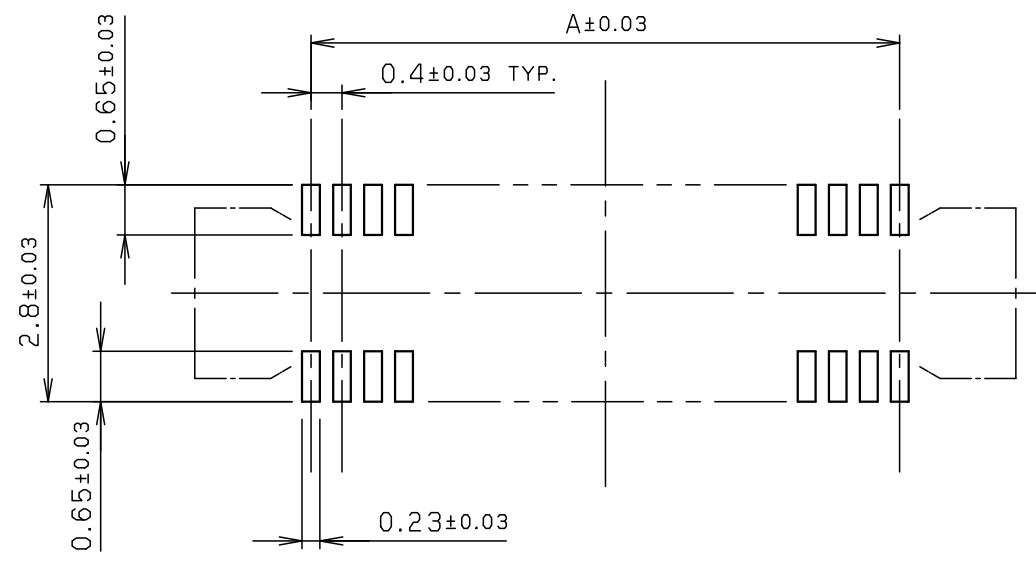
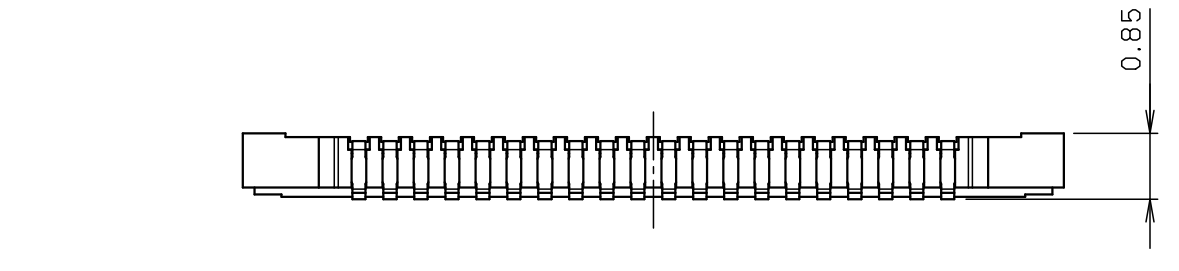


NO.	DESCRIPTION	PART NO.	QTY	MATERIAL	DRW NO.	REMARKS
1	INSULATOR		1	LCP		COLOR: BLACK US94V-0
2	CONTACT		N	COPPER ALLOY		AU PLATING

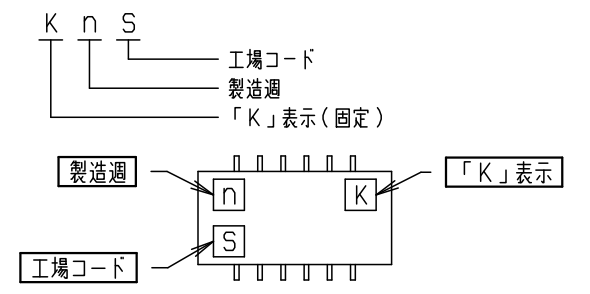


極数 NO. OF POS.	A	C		
10	1.6	4.6		
12	2.0	5.0		
14	2.4	5.4		
16	2.8	5.8		
18	3.2	6.2		
20	3.6	6.6		
22	4.0	7.0		
24	4.4	7.4		
26	4.8	7.8		
30	5.6	8.6		
32	6.0	9.0		
34	6.4	9.4		
40	7.6	10.6		
44	8.4	11.4		
50	9.6	12.6		
54	10.4	13.4		
60	11.6	14.6		

※この表は1ページ目のみ適用
 ※THIS CHART IS APPLICABLE TO SHEET-1 ONLY.



注記
 NOTE
 ① テールの輪郭度は、0.08MAX.
 COPLANARITY OF CONTACT TAIL
 IS 0.08MAX.
 ② 図示の位置に LOT NO. を刻印する。(レーザー)
 LOT NO. SHALL BE MARKED
 AT THE SPECIFIED POSITION. (LASER)

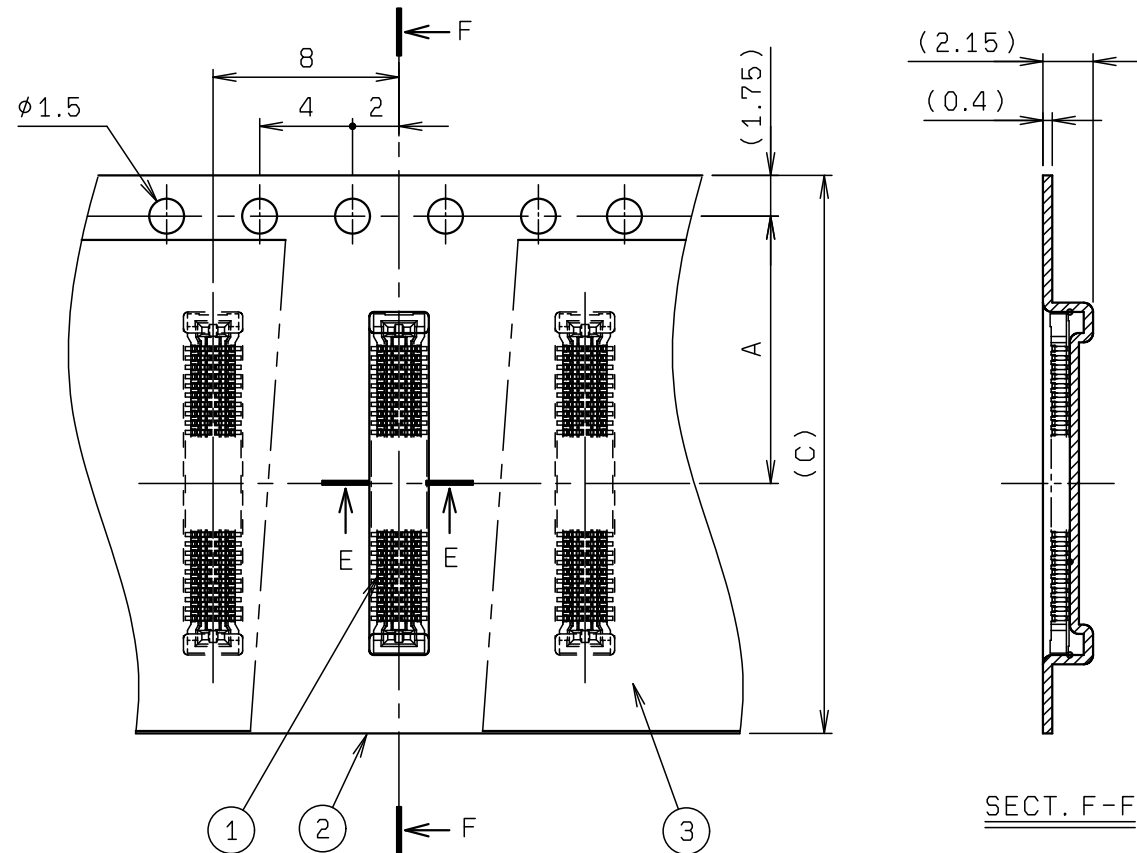


※この注記は1ページ目のみ適用
 ※THIS NOTE IS APPLICABLE TO SHEET-1 ONLY.

技術部
 '23.08.08
 発行

ROHS規制対応
 COMPLIANT WITH
 ROHS REGULATIONS

TOLERANCE / 一般公差(S)		PRODUCT SPEC / 製品規格		D	DCN18856	2018/11/19	S. WU			A. TSUNEMURA	
X < 10	±0.2			C	DCN-782	2016/08/22	G. YAMAZAKI	H. WATANABE	K. YAMANE		
10 ≤ X < 30	±0.25	UNIT	ANGLE	O	EDN-226	2009/06/05	T. SASAKI			K. HONDA	
30 ≤ X	±0.3	mm	3RD	NO.	EDN/DCN	DATE	ISSUE	CHECKED	APPROVED		
ANGLE / 角度 ±3°		SCALE	DATE	PART NAME / 品名							
		10:1	2009/06/05	SERIES 5804 REC ASSY 0.4mm PITCH BOARD TO BOARD H=0.9							
DRAWN	DESIGNED	CHECKED	APPROVED	PART NO. / 型番							
T. SASAKI	T. SASAKI		K. HONDA	24 5804 XXX 000 829 +							
KYOCERA				DWG NO. / 図番				SHEET/REV			
				BJS 5804004				1/2 D			



SECT. F-F

NO.	DESCRIPTION	PART NO.	QTY	MATERIAL	DRW NO.	REMARKS
1	CONNECTOR	24 5804 XXX 000 829 +	3000			20 5804 XXX 000 829 +
2	EMBOSSSED TAPE		1	POLYSTYRENE		
3	TOP COVER TAPE		1	PET		
4	REEL		1	POLYSTYRENE		

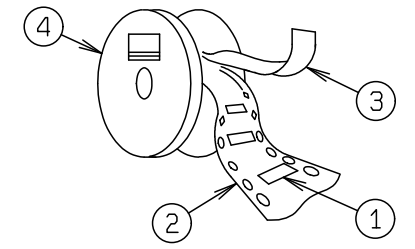
種数 NO. OF POS.	A	B	C	D
10	5.5	-	12.0	18.4
12	5.5	-	12.0	18.4
14	7.5	-	16.0	22.4
16	7.5	-	16.0	22.4
18	7.5	-	16.0	22.4
20	7.5	-	16.0	22.4
22	7.5	-	16.0	22.4
24	7.5	-	16.0	22.4
26	7.5	-	16.0	22.4
30	7.5	-	16.0	22.4
32	7.5	-	16.0	22.4
34	11.5	-	24.0	30.4
40	11.5	-	24.0	30.4
44	11.5	-	24.0	30.4
50	11.5	-	24.0	30.4
54	11.5	-	24.0	30.4
60	11.5	-	24.0	30.4

※この表は2ページ目にも適用
 ※THIS CHART IS APPLICABLE TO SHEET-2 ONLY.

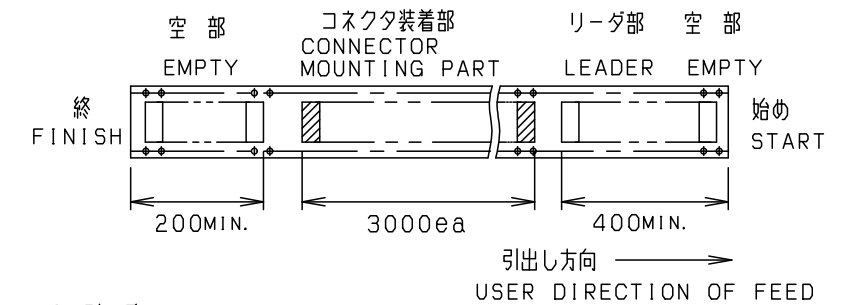
注記
NOTE

1. 梱包数量 : 3000 個/リール
 PACKING QUANTITY : 3000 ea/reel

2. 納入時のリール巻き方向
 REELING DIRECTION IN DELIVERY



3. 引出し方向
 USER DIRECTION OF FEED



4. 型番
 P/N 24 5804 XXX 000 829 +

種数
NO. OF POS.
 バリエーション
VARIATION
 0: WITHOUT VACUUM ITEM
 バリエーション
VARIATION

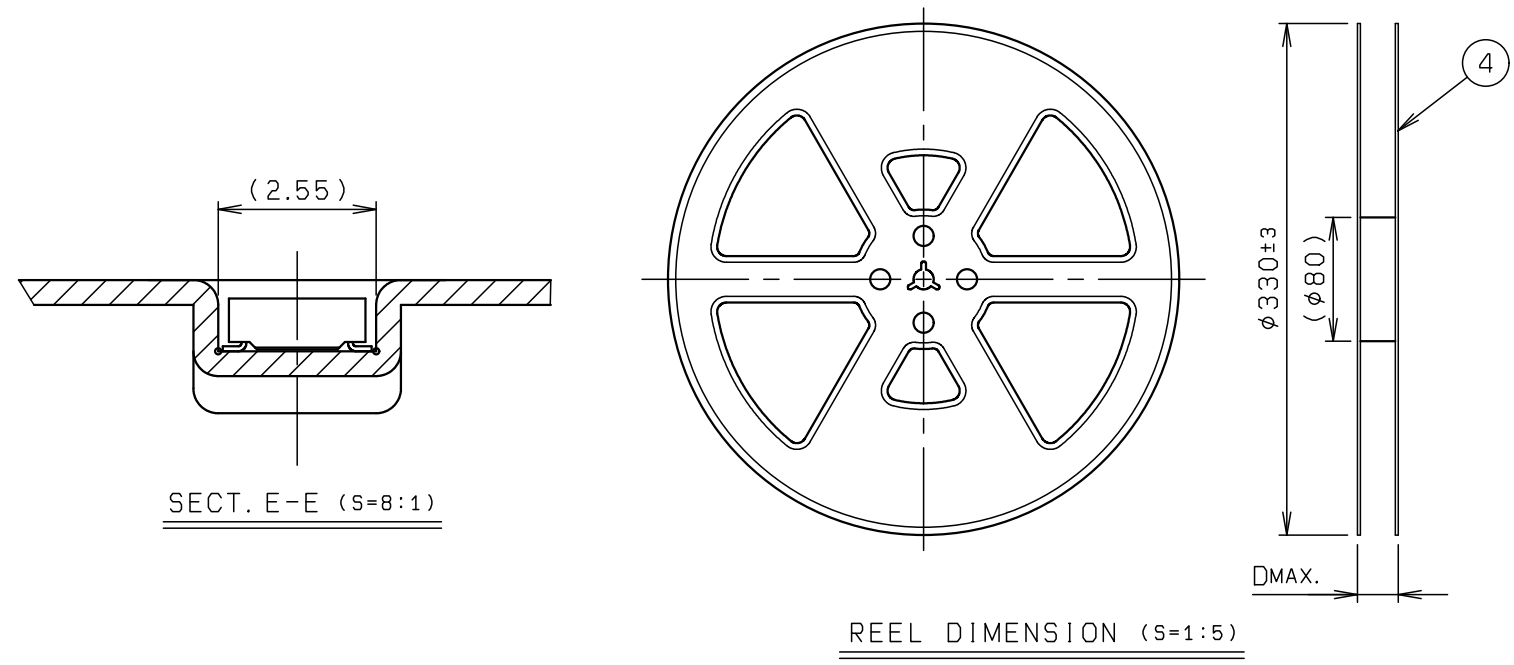
	ANCHOR PLATE	BOSS
0	-	-

@: WITH
 -: WITHOUT

技術部
 '23.08.08
 発行

※この注記の1~3は2ページ目にも適用
 ※THESE NOTES 1 TO 3 ARE APPLICABLE TO SHEET-2 ONLY.

ROHS規制対応
 COMPLIANT WITH
 ROHS REGULATIONS



SECT. E-E (S=8:1)

REEL DIMENSION (S=1:5)

TOLERANCE / 一般公差(S)		PRODUCT SPEC / 製品規格		REFER TO SHEET 1/2					
X < 10	± 0.2	UNIT	ANGLE	NO.	EDN/DCN	DATE	ISSUE	CHECKED	APPROVED
10 ≤ X < 30	± 0.25	mm	3RD	PART NAME / 品名					
30 ≤ X	± 0.3	SCALE	DATE	SERIES 5804 EMBOSS TAPE ASSY					
ANGLE / 角度	$\pm 3^\circ$	3 : 1	2009/06/05	REC ASSY ST SMT WITHOUT ANCHOR PLATE H=0.9					
DRAWN	DESIGNED	CHECKED	APPROVED	PART NO. / 型番					
T. SASAKI	T. SASAKI		K. HONDA	24 5804 XXX 000 829 +					
KYOCERA				DWG NO. / 図番		SHEET/REV			
				BJS 5804004		12/2		D	