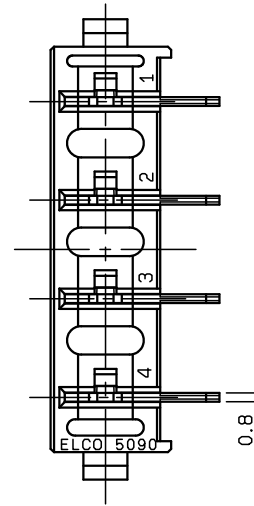
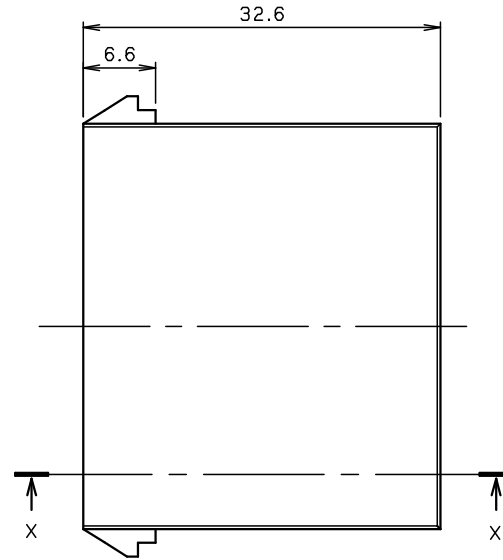
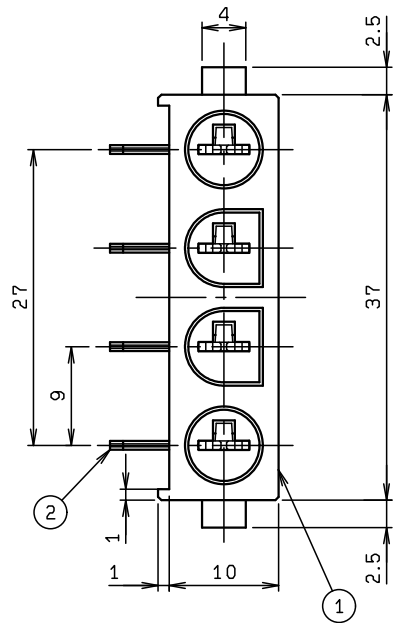
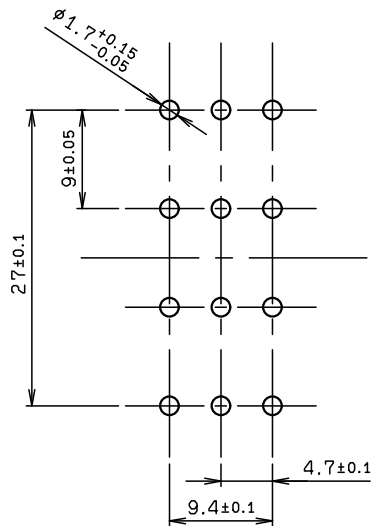


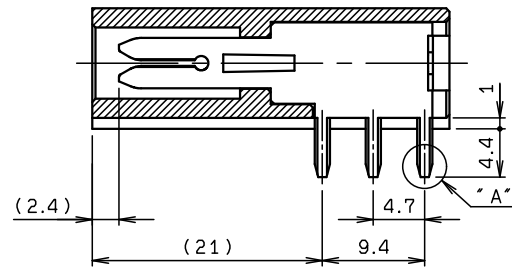
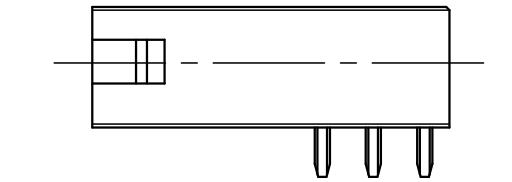
NO.	DESCRIPTION	PART NO.	QTY	MATERIAL	DRW NO.	REMARKS
1	INSULATOR		1	6-6NYLON		
2	CONTACT		4	COPPER ALLOY, t=0.8±0.01 Sn REFLOW		



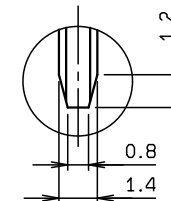
仕様 SPECIFICATION	
定格電流 CURRENT RATING	30A MAX.
定格電圧 VOLTAGE RATING	AC 600V r. m. s
耐電圧 DIELECTRIC WITHSTANDING VOLTAGE	AC 5000V r. m. s(1 min.)
絶縁抵抗 INSULATION RESISTANCE	1000MΩ MIN.
インシュレータ材質 INSU. MATERIAL	6-6 NYLON UL94V-0



推奨基板寸法  
MOUNTING LAYOUT  
(t=3.2MAX.)



SECT. X-X



DETAIL "A"  
(S=5/1)

ROHS規制対応  
COMPLIANT WITH  
ROHS REGULATIONS

TOLERANCE / 一般公差(S)		PRODUCT SPEC / 製品規格							
±0.3									
UNIT mm		ANGLE 3RD		O EDN-419 6-16-08					
SCALE 2 : 1		DATE 6-16-08		NO. EDN/DCN	DATE	ISSUE	CHECKED	APPROVED	
DRAWN M. TAKAHASHI		DESIGNED		PART NAME / 品名 SERIES 5090 ASSY POWER CONNECTOR 4P BOARD TYPE					
CHECKED		APPROVED		PART NO. / 製番 20 5090 004 100 808 +					
DWG NO. / 図番 BJS 5090006		KYOCERA Corporation		SHEET/REV 1/1 0					