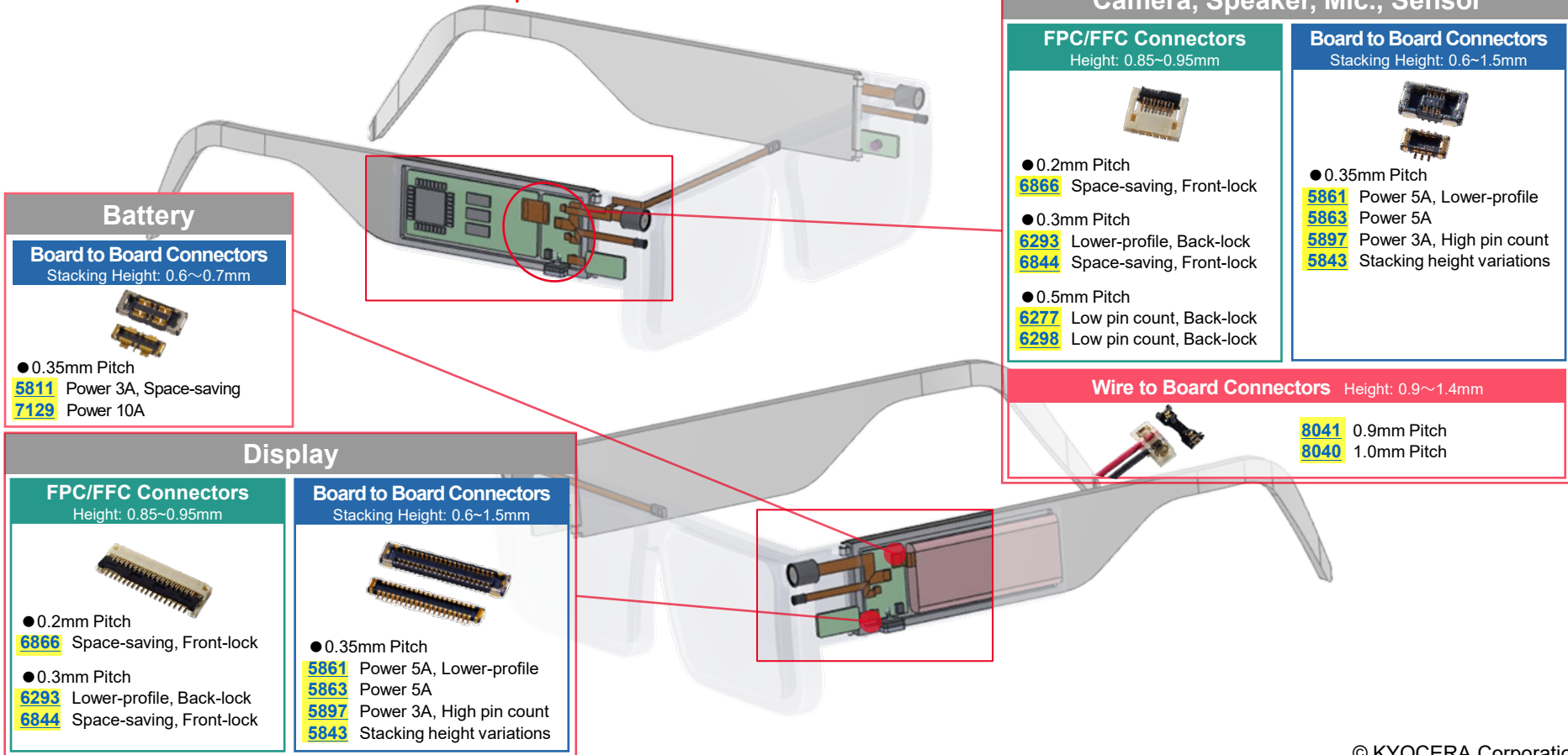



* Click the series number to check the product information



Battery


Board to Board Connectors
Stacking Height: 0.6~0.7mm



- 0.35mm Pitch
- [5811](#) Power 3A, Space-saving
- [7129](#) Power 10A

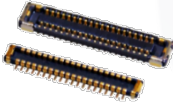
Display

FPC/FFC Connectors
Height: 0.85~0.95mm



- 0.2mm Pitch
- [6866](#) Space-saving, Front-lock
- 0.3mm Pitch
- [6293](#) Lower-profile, Back-lock
- [6844](#) Space-saving, Front-lock


Board to Board Connectors
Stacking Height: 0.6~1.5mm



- 0.35mm Pitch
- [5861](#) Power 5A, Lower-profile
- [5863](#) Power 5A
- [5897](#) Power 3A, High pin count
- [5843](#) Stacking height variations


Camera, Speaker, Mic., Sensor

FPC/FFC Connectors
Height: 0.85~0.95mm




- 0.2mm Pitch
- [6866](#) Space-saving, Front-lock
- 0.3mm Pitch
- [6293](#) Lower-profile, Back-lock
- [6844](#) Space-saving, Front-lock
- 0.5mm Pitch
- [6277](#) Low pin count, Back-lock
- [6298](#) Low pin count, Back-lock

Board to Board Connectors
Stacking Height: 0.6~1.5mm



- 0.35mm Pitch
- [5861](#) Power 5A, Lower-profile
- [5863](#) Power 5A
- [5897](#) Power 3A, High pin count
- [5843](#) Stacking height variations

Wire to Board Connectors Height: 0.9~1.4mm



- [8041](#) 0.9mm Pitch
- [8040](#) 1.0mm Pitch